



Ewelme Road, SE23
£375,000

0208 702 9444
pedderproperty.com

pedder



In general

- Offered chain free
- Separate fitted kitchen
- Modern bathroom suite
- Abundance of light
- Plenty of storage
- Double glazing
- Close to excellent transport links
- Two bedrooms
- Spacious reception room

In detail

A charming two bedroom split-level apartment for sale on the very popular Ewelme Road. Offered chain free.

This lovely property comprises a spacious reception room, separate fitted kitchen, modern bathroom suite and two bedrooms. Further benefits include an abundance of light, plenty of storage, double glazing and so much more.

The property is situated approximately just 0.4 miles to Forest Hill station offering excellent transport links into London Bridge, Victoria, Canada Water, Canary Wharf, Shoreditch, Whitechapel, Highbury & Islington and many other locations. It is also very well placed for access to various local amenities including a variety of parks, restaurants, supermarkets, coffee shops, cafes and gastro pubs.

Viewings are highly recommended, call the Pedder Forest Hill Sales team to arrange a viewing today.

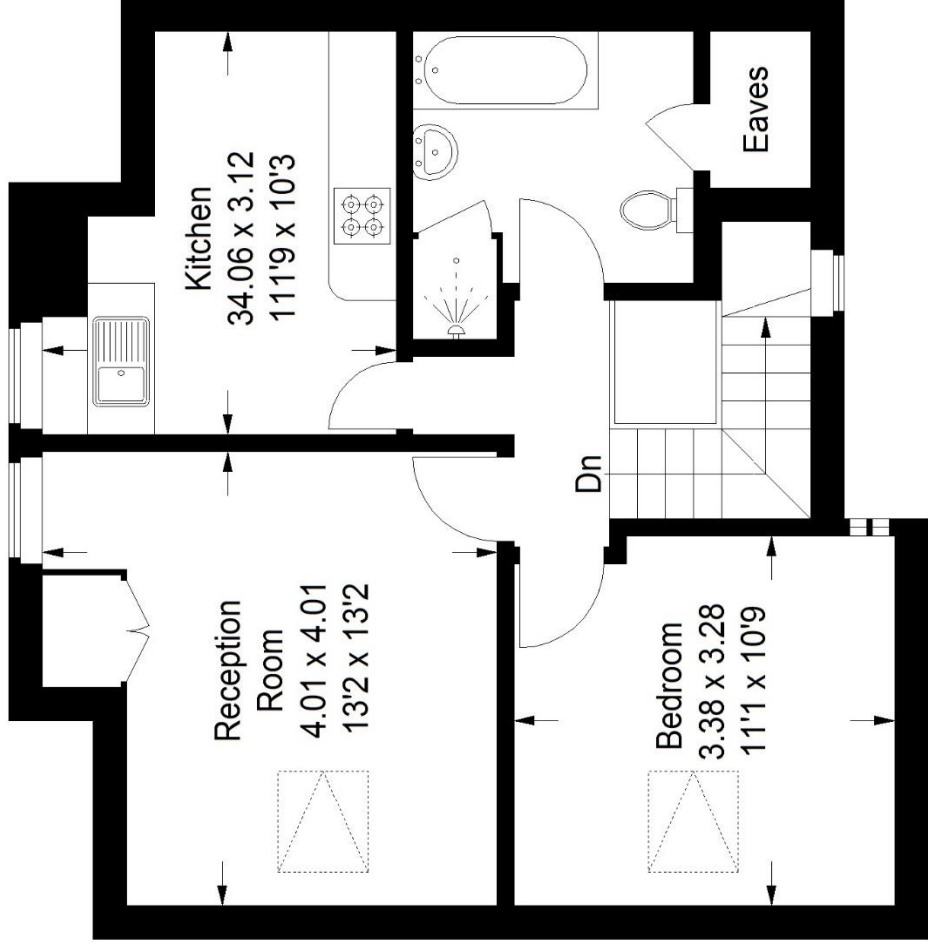
EPC: E | Council Tax Band: B | Lease: 93 years remaining | SC: £0 | GR: £250 | BI: £350



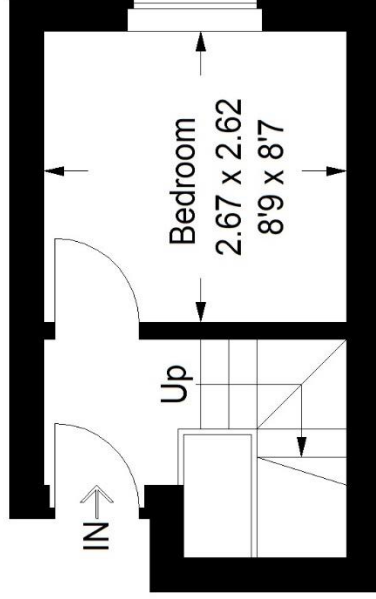
Floorplan

Ewelme Road, SE23

Approximate Gross Internal Area
(Excluding Eaves)
63.1 sq m / 679 sq ft



Second Floor



First Floor

Copyright www.pedderproperty.com © 2024

These plans are for representation purposes only as defined by RICS - Code of Measuring Practice. Not drawn to Scale. Windows and door openings are approximate. Please check all dimensions, shapes and compass bearings before making any decisions reliant upon them.

Score	Energy rating	Current	Potential
92+	A		
81-91	B		
69-80	C		76 C
55-68	D		
39-54	E	46 E	
21-38	F		
1-20	G		

Pedder Property Ltd trading as Pedder for themselves and for the vendor/landlord of this property whose agents they are, give notice that (1) these particulars do not constitute any part of an offer or contract, (2) all statements contained within these particulars are made without responsibility on the part of Pedder or the vendor/landlord, (3) whilst made in good faith, none of the statements contained within these particulars are to be relied upon as a statement of representation or fact, (4) any intending purchaser/tenant must satisfy him/herself by inspection or otherwise as to the correctness of each of the statements contained within these particulars, (5) the vendor/landlord does not make or give either Pedder or any person in their employment any authority to make or give representation or warranty whatsoever in relation to this property.