

TO LET



West Road, Westcliff On Sea, Essex
£750 pcm


MARTIN&CO

Ground floor flat,
2 bedroom, 1 bathroom

£825 pcm

Date available: 14th December 2020

Deposit: £951.92

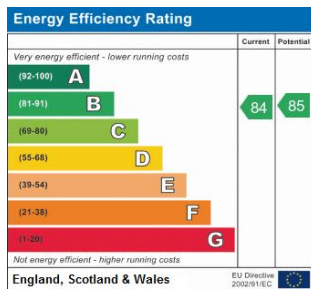
Unfurnished

Council Tax band: C

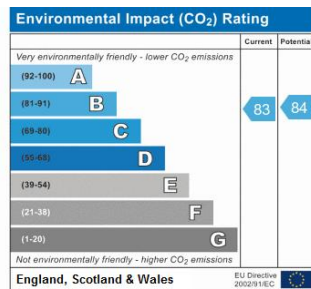
- TWO BEDROOMS
- GROUND FLOOR FLAT
- GOOD SIZE LOUNGE
- OPEN PLAN KITCHEN
- FITTED OVEN/HOB
- SHOWER OVER THE BATH
- ALLOCATED PARKING

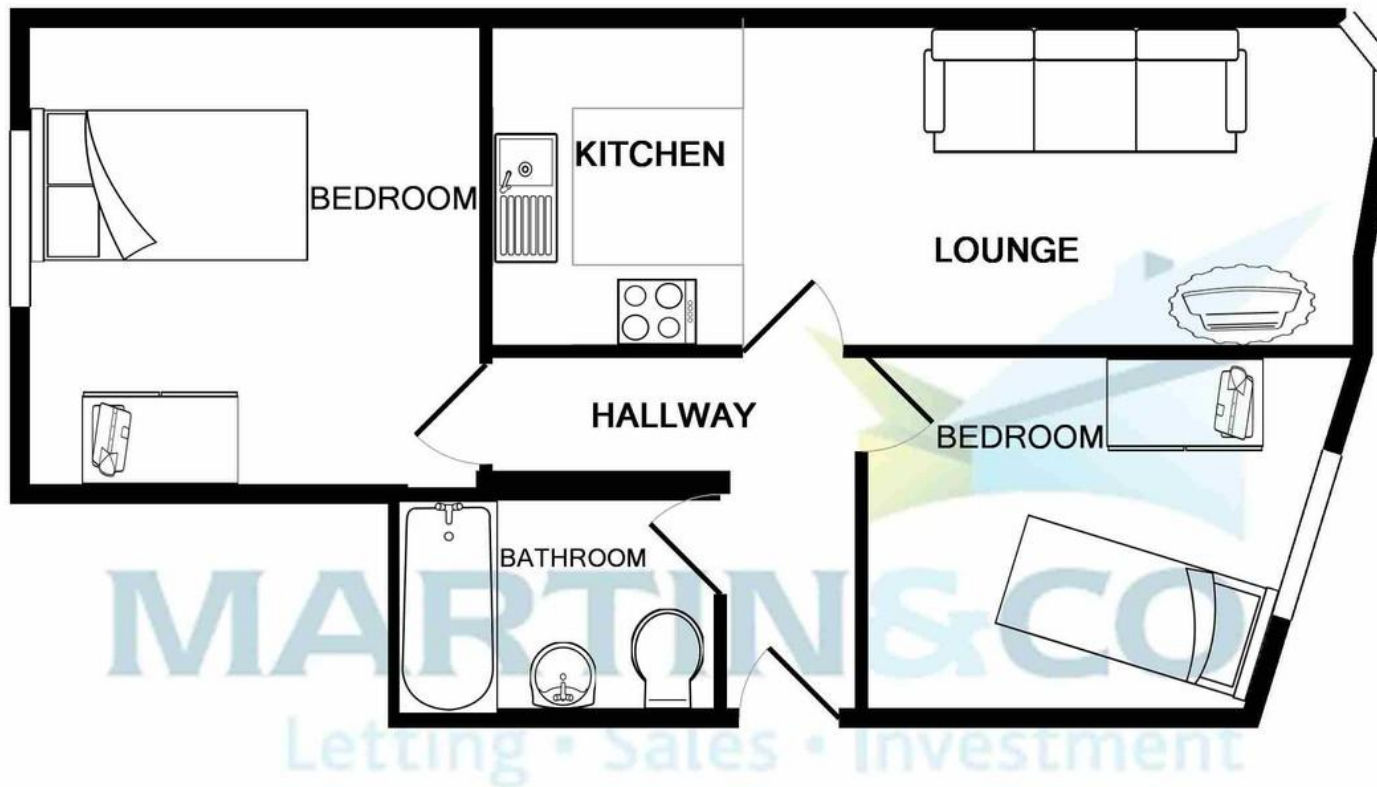
UNFURNISHED TWO bedroom GROUND FLOOR flat to rent in Westcliff on sea. The property consists of one double and one single bedroom, Good size lounge, Open plan kitchen with fitted oven/hob and bathroom with shower over the bath. The property also benefits from GAS CENTRAL HEATING, DOUBLE GLAZING and ALLOCATED PARKING.No pets. No smokers.





Address:
Flat 6 111 West Road Westcliff on Sea SS0 9AZ Essex





TOTAL APPROX. FLOOR AREA 506 SQ.FT. (47.0 SQ.M.)

Whilst every attempt has been made to ensure the accuracy of the floor plan contained here, measurements

Martin & Co Southend

134a - 136a London Road • Southend-On-Sea • SS1 1PQ

T: 01702 430417 • E: southend@martinco.com

01702 430417

<http://www.martinco.com>



Accuracy: References to the Tenure of a Property are based on information supplied by the Seller. The Agent has not had sight of the title documents. A Buyer is advised to obtain verification from their Solicitor. Items shown in photographs including but not limited to carpets, fixtures and fittings are not included unless specifically mentioned within the sales particulars. They may however be available by separate negotiation. Buyers must check the availability of any property and make an appointment to view before embarking on any journey to see a property. No person in the employment of the agent has any authority to make any representation about the property, and accordingly any information given is entirely without responsibility on the part of the agents, sellers(s) or lessors(s). Any property particulars are not an offer or contract, nor form part of one. **Sonic / Laser Tape:** Measurements taken using a sonic / laser tape measure may be subject to a small margin of error. **All Measurements:** All Measurements are Approximate. **Services Not tested:** The Agent has not tested any apparatus, equipment, fixtures and fittings or services and so cannot verify that they are in working order or fit for the purpose. A Buyer is advised to obtain verification from their Solicitor or Surveyor. **Mortgage & Financial Advice:** The Martin & Co mortgage service is provided by London & Country Mortgages the UK's largest Independent Fee-Free mortgage broker of Beazer House, Lower Bristol Road, Bath, BA2 3BA. Authorised and regulated by the Financial Conduct Authority. Their FCA number is 143002. **YOUR HOME IS AT RISK IF YOU DO NOT KEEP UP REPAYMENTS ON A MORTGAGE OR OTHER LOANS SECURED ON IT.** Full written quotation available on request. A suitable life policy may be required. Loans subject to status. Minimum age 18. If you are making a cash offer, we shall require written confirmation of the source and availability of your funds in order that our client may make an informed decision.

