



OAKFIELD



St. Georges Road, Hastings, TN34 3NH

£1,100 Per Calendar Month





## St. Georges Road, Hastings, TN34 3NH

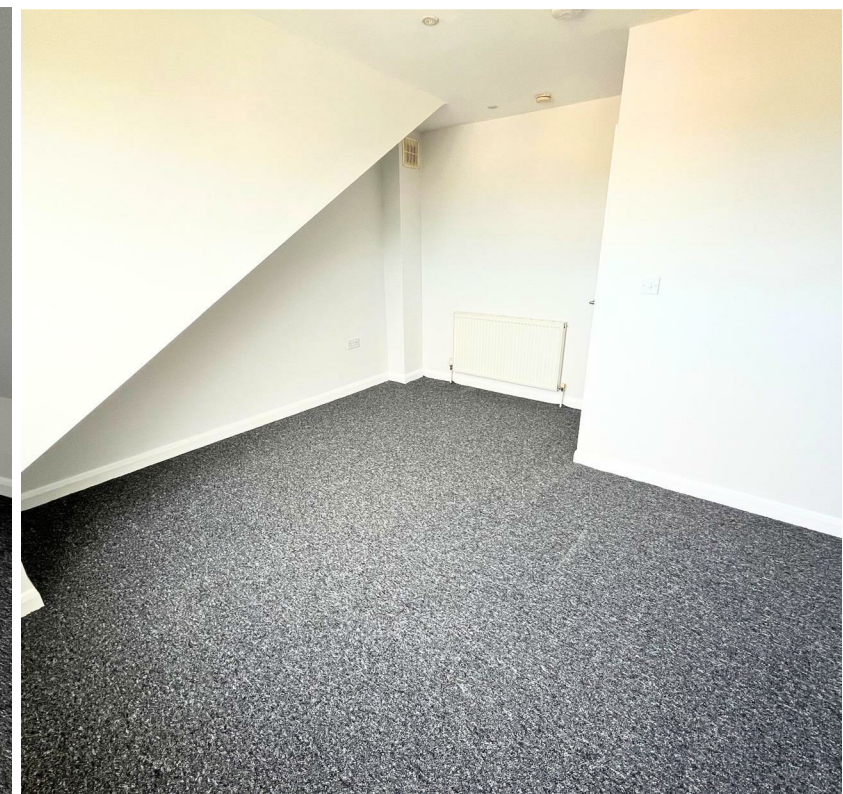
Built in 2010, this three-level maisonette is situated in St. Georges Road, conveniently located for both Hastings Old Town and Alexandra Park. The property boasts a newly decorated interior, including new carpets throughout, offering a fresh and inviting atmosphere for its future residents.

Upon entering, there are stairs to the first floor which comprises open plan living room / kitchen and double doors to the decked BALCONY, with far reaching views. Also on the first floor is the second bedroom.

Stairs rise to the second floor which comprises the main bedroom, also with far reaching views, and the family bathroom.

Additionally, the off-road PARKING ensures convenience for those with vehicles, making coming home a breeze.

Available early to mid June 2025  
Minimum Term 12 months  
Annual Income Threshold £33,000







### Living Room / Kitchen

16'4" (narrowing to 9'0") x 14'1"  
(narrowing to 8' (5m (narrowing to 2.76m)  
x 4.31m (narrowing to 2.52)

### Balcony

14'1" x 5'6" (4.31m x 1.69m)

### Bedroom 1

14'2" (narrowing to 7'6") x 13'1"  
(narrowing to 9' (4.32m (narrowing to  
2.3m) x 4m (narrowing to 3m))

### Bedroom 2

10'9" x 7'4" (3.28m x 2.26m)

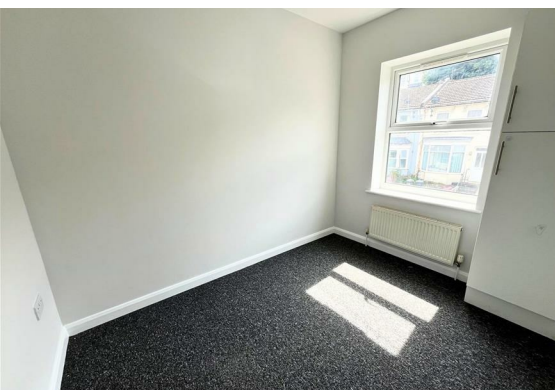
### Bathroom

10'8" x 4'11" (3.26m x 1.5m)

### Off road parking space at rear

**Council Tax Band B £1,986.55 per annum**

**EPC Rating C**





Floor Plan

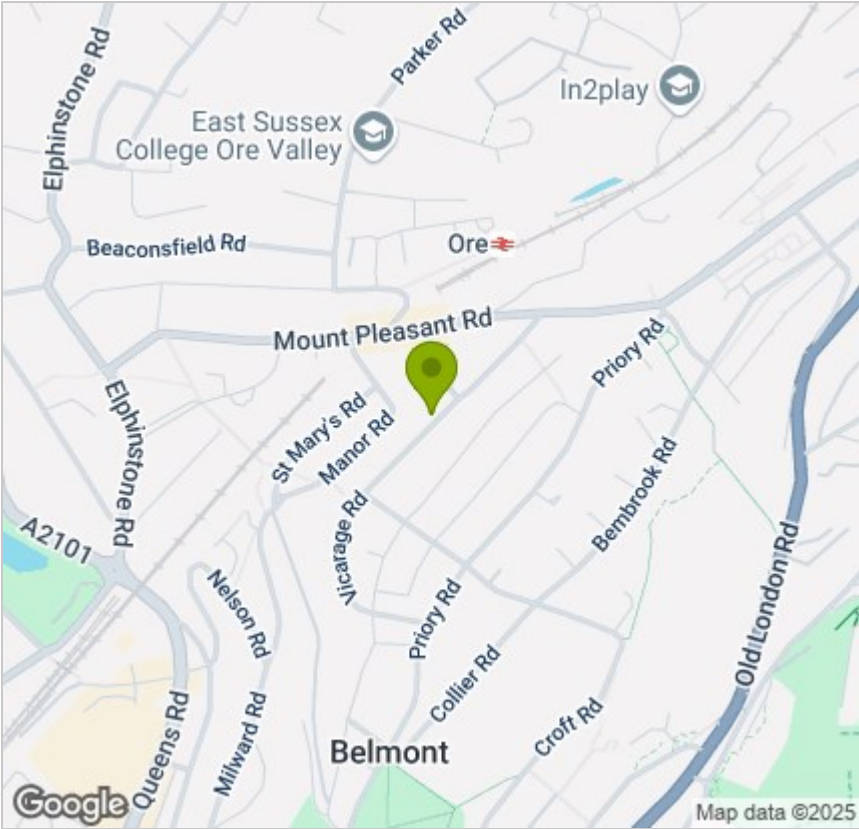


Viewing

Please contact us on 01424 446644 if you wish to arrange a viewing appointment for this property or require further information.

These particulars, whilst believed to be accurate are set out as a general outline only for guidance and do not constitute any part of an offer or contract. Intending purchasers should not rely on them as statements of representation of fact, but must satisfy themselves by inspection or otherwise as to their accuracy. No person in this firms employment has the authority to make or give any representation or warranty in respect of the property.

Area Map



Energy Efficiency Graph

