



OAKFIELD



Flat 34, 3 Martin Court, Hastings, TN34 1DY

£1,075 Per Calendar Month



Flat 34, 3 Martin Court, Hastings, TN34 1DY

*** PREMIUM ONE BEDROOM
ADAPTED APARTMENT WITH OWN
ENTRANCE ***

A thoughtfully designed one-bedroom adapted apartment within the brand-new Station Plaza development in the heart of Hastings. Perfectly suited for wheelchair users, this home combines accessibility with comfort, featuring its own private front door with slope access for ease of entry.

Inside, the apartment is bright and airy, with wide doors and a spacious layout. The open-plan living area includes double patio doors that allow natural light to flood the space, creating a welcoming atmosphere. The kitchen has been specially designed with an oven set at a lower level for convenience, and both the hob and sink can be raised or lowered to suit individual needs at the turn of a handle.

The bedroom is a good-sized double, while a large storage cupboard offers practical space for everyday essentials. A modern bathroom completes the apartment, blending accessibility with contemporary style.





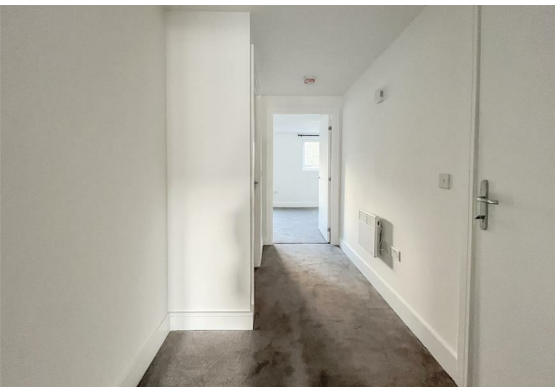
Station Plaza has been designed with residents' lifestyles in mind. The development is pet-friendly and includes digital on-site parcel lockers to ensure deliveries are safe and convenient. Security and peace of mind are a priority, with CCTV across the development, secure gated entry, and a private underground car park where each flat can benefit from an allocated space for just £25 per month.

Residents will also enjoy access to a range of exclusive on-site amenities, including a 24/7 gym, a cinema room and a welcoming communal lounge that will help create a sense of community.

More information on Station Plaza and what this sought after new development offers can be found on their website <https://www.stationplazahastings.co.uk/>

Living Room / Kitchen

total floor area - 86'3" sq (total floor area - 26.3m sq)



Bedroom

total floor area - 60'0" m sq (total floor area - 18.3 m sq)

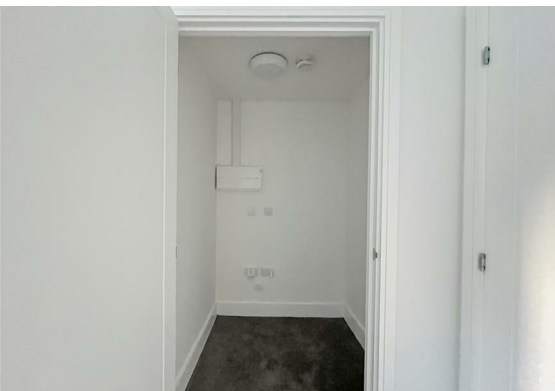
Bathroom

total floor area - 20'0" m sq (total floor area - 6.1 m sq)

Terrace

Total floor area: 60.8 m sq

Council Tax Band to be confirmed



Floor Plan

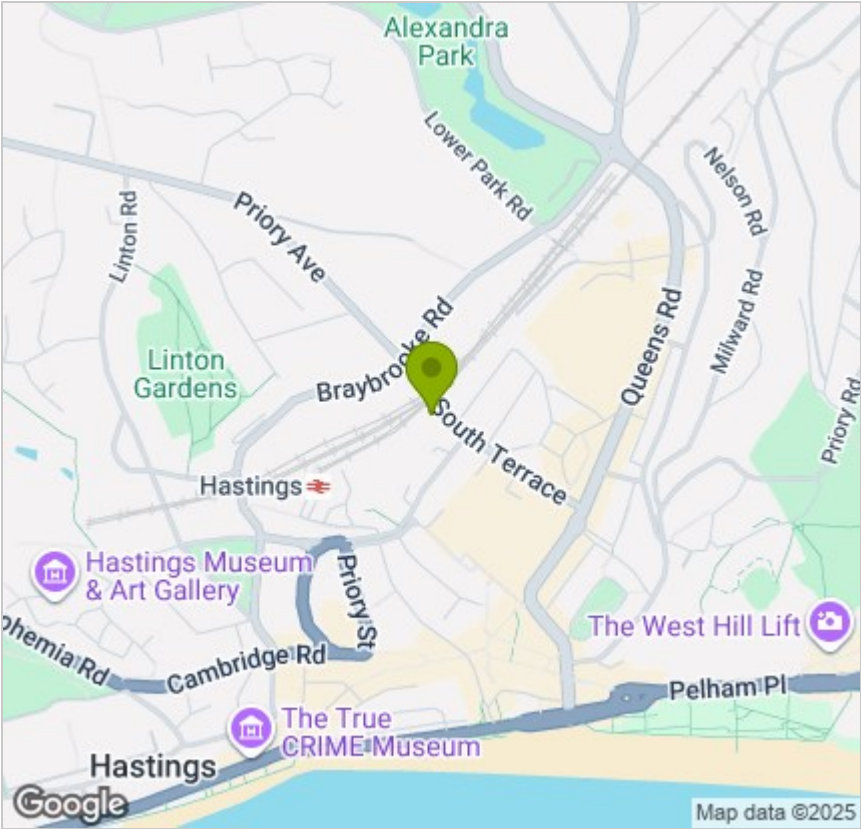


Viewing

Please contact us on 01424 446644 if you wish to arrange a viewing appointment for this property or require further information.

These particulars, whilst believed to be accurate are set out as a general outline only for guidance and do not constitute any part of an offer or contract. Intending purchasers should not rely on them as statements of representation of fact, but must satisfy themselves by inspection or otherwise as to their accuracy. No person in this firms employment has the authority to make or give any representation or warranty in respect of the property.

Area Map



Energy Efficiency Graph

