



OAKFIELD



Firle Close, Hastings, TN35 5ET

£1,050 Per Calendar Month



Firle Close, Hastings, TN35 5ET

This two-bedroom flat is located in Ore's popular residential area, close to local shops, both primary and secondary schools, as well as the railway station, which are all within walking distance.

The property is located on the ground floor of this purpose-built block and includes two double bedrooms, a large living room with views of Hastings and the sea, a bathroom with a shower over the bath and a modern fitted kitchen with a freestanding gas oven. The private rear garden includes a large shed for storage.

In addition, the property has double glazing and gas central heating.

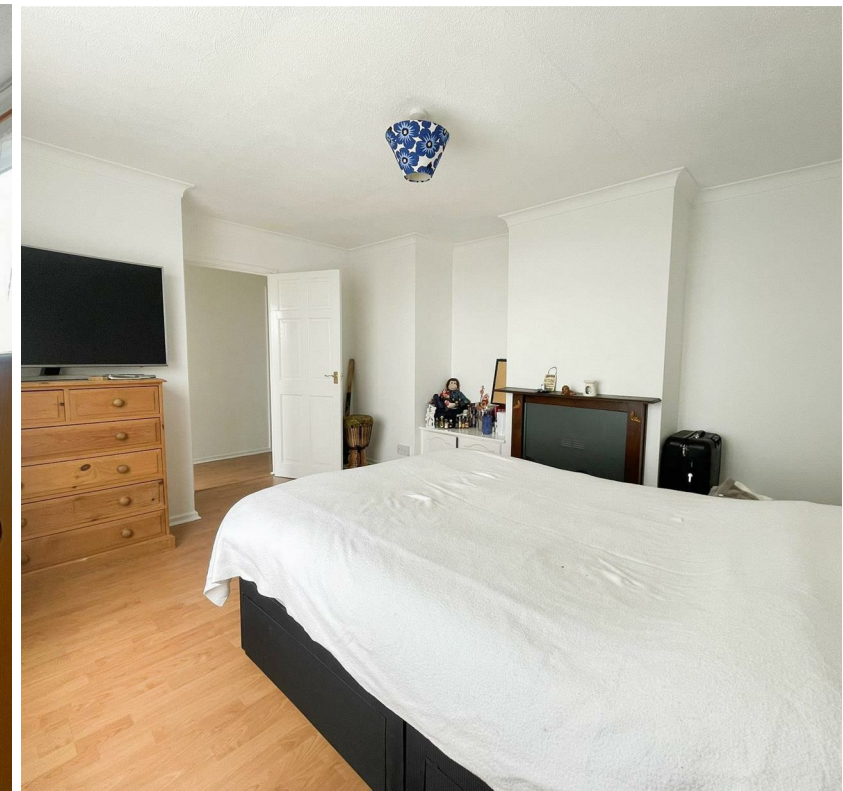
Please note:

An annual household income of £31,500 will be required for the affordability criteria of this property.

The minimum tenancy length is 12 Months.

Pets are considered.

Available end of June 2025!





Kitchen
11'8" x 9'4" (3.58m x 2.87m)

Living Room
14'1" x 12'8" (4.30m x 3.88m)

Utility Room
8'7" x 2'11" (2.64m x 0.89m)

Bedroom One
11'11" x 11'3" (3.65m x 3.45m)

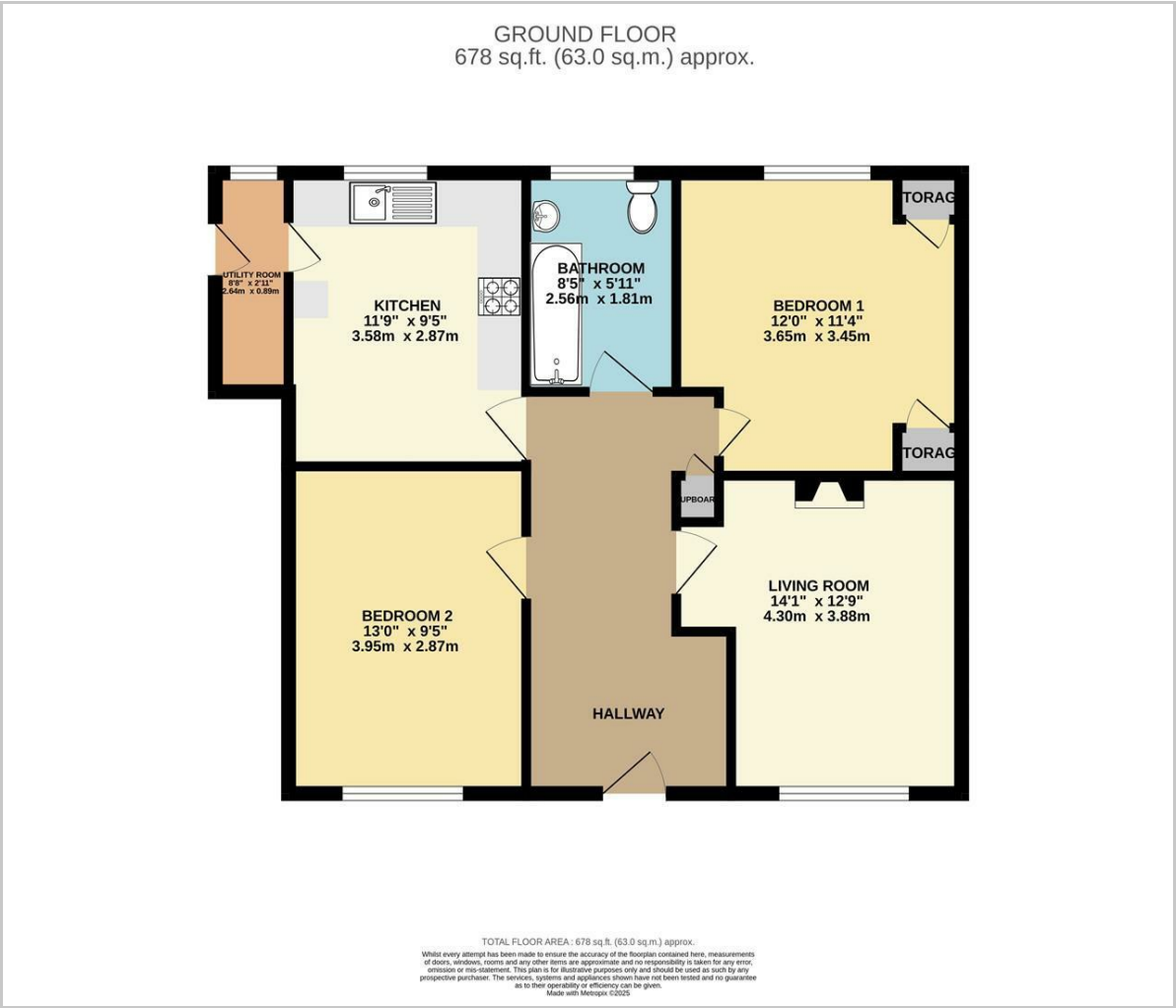
Bedroom Two
12'11" x 9'4" (3.95m x 2.87m)

Bathroom
8'4" x 5'11" (2.56m x 1.81m)

Council Tax Band A - £1,702.76 per annum



Floor Plan

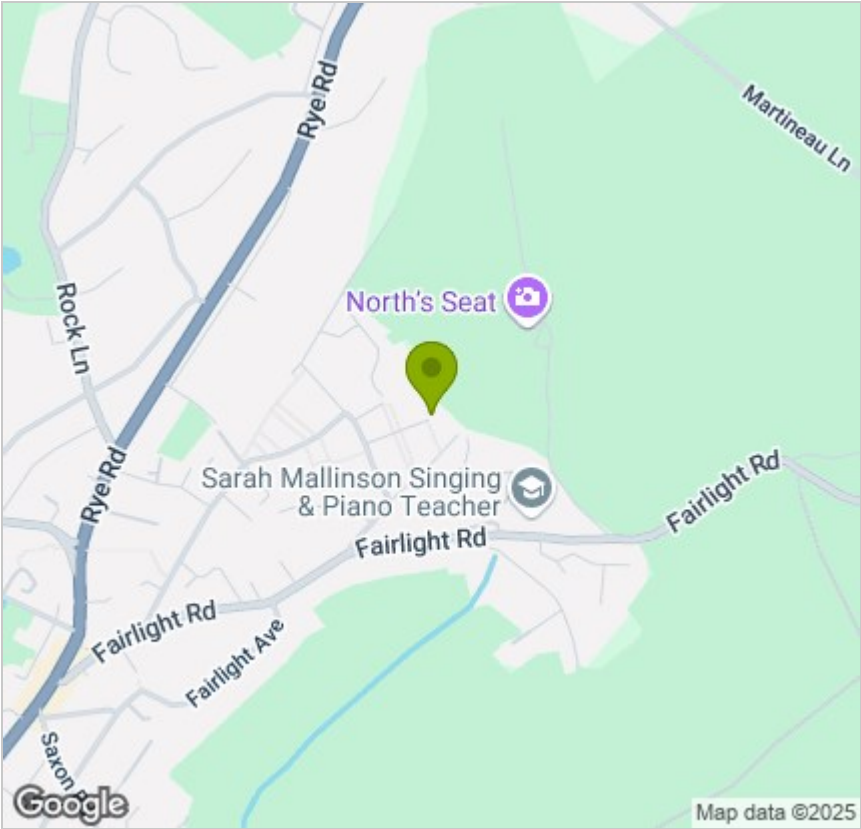


Viewing

Please contact us on 01424 446644
if you wish to arrange a viewing appointment for this property or require further information.

These particulars, whilst believed to be accurate are set out as a general outline only for guidance and do not constitute any part of an offer or contract. Intending purchasers should not rely on them as statements of representation of fact, but must satisfy themselves by inspection or otherwise as to their accuracy. No person in this firms employment has the authority to make or give any representation or warranty in respect of the property.

Area Map



Energy Efficiency Graph

