



OAKFIELD



Flat 1, 1 Martin Court, Hastings, TN34 1DY

£1,050 Per Month





## Flat 1, 1 Martin Court, Hastings, TN34 1DY

Welcome to Station Plaza, an exciting new build to rent residential development nestled in the heart of Hastings adjacent to Hastings Train Station as well as being just a 6 minute walk to the seafront and 10 minutes from Alexandra Park. The contemporary scheme offers 103 apartments designed to cater to diverse lifestyles. There is a selection of 1 and 2 bedroom apartments as well as 2 and 3 bedroom penthouses. If you are looking for the perfect place to call home, these apartments offer a unique blend of modern design, convenience, and comfort.

Each apartment has been thoughtfully designed to maximize space, light, and functionality. The open plan living space offers a modern kitchen with washing machine, fridge/freezer and integrated dishwasher as well as a spacious living and dining area. This apartment offers 2 double bedrooms with a family bathroom offering a shower over the bath. Accessible from living room is the balcony which overlooks the communal gardens which form part of the development. All apartments have modern electric heating and entry intercom systems.

The development will be pet friendly as well as benefiting from digital on-site parcel lockers so residents can be sure their deliveries are secure. Other key features include CCTV across the development for your security, secure gated entry, and a secure underground car park where an allocated parking space is available per flat at an additional £25 per month. Station Plaza will be a community where residents will have use of an onsite residents gym accessible 24/7, a cinema room which can be booked for exclusive access as well as a communal residents lounge.

More information on Station Plaza and what this sought after new development offers can be found on their website <https://www.stationplazahastings.co.uk/>

Contact Oakfield today to book to be one of the first to view!



### COMMUNAL LOUNGE

This brand-new development will feature a communal lounge, ideal for socialising and relaxing with friends, neighbours, or guests. Whether you're unwinding after a long day or hosting a casual get-together, this lounge is the perfect space to connect and enjoy.



### USE OF EXCLUSIVE GYM

Within this brand-new development, there will be a fully-equipped gym exclusively for the use of residents. Say goodbye to costly gym memberships and enjoy the convenience of working on your fitness right at your doorstep.



### CINEMA ROOM

This brand-new development will offer the additional luxury of a dedicated cinema room. Enjoy your favourite movies in the comfort of home with a high-quality viewing experience. It's the perfect spot for movie nights with friends or simply relaxing in style.

**Living Room**

total floor area: 59'8" m sq (total floor area: 18.2 m sq)

**Kitchen**

total floor area: 16'4" sq (total floor area: 5m sq )

**Bedroom**

total floor area: 39'0" m sq (total floor area: 11.9 m sq )

**Bathroom**

total floor area: 13'1" sq (total floor area: 4m sq )

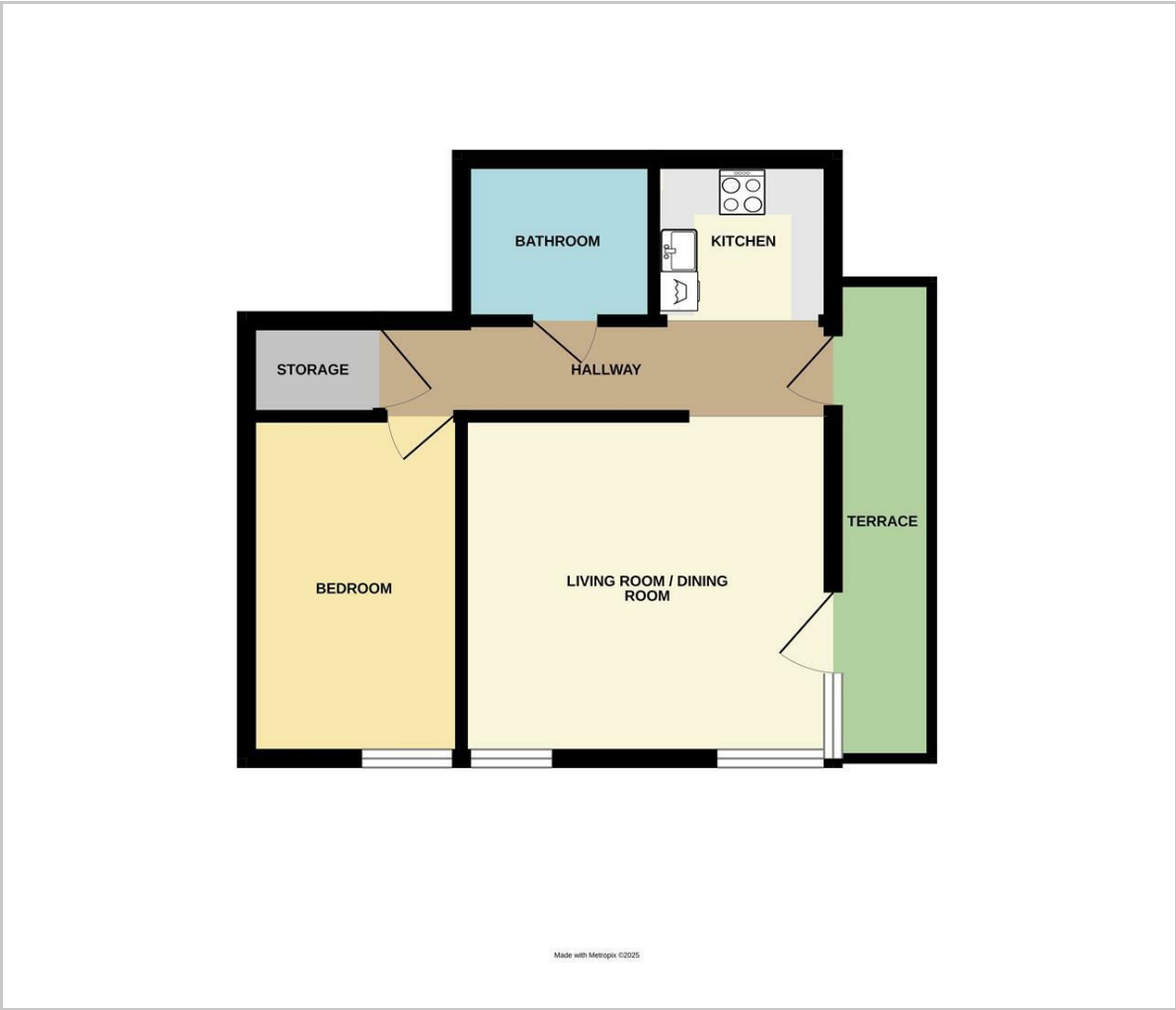
**Terrace**

total floor area: 28'10" sq (total floor area: 8.8m sq )

**Total floor area: 50.5 m sq**

**Council Tax Band to be confirmed**

Floor Plan

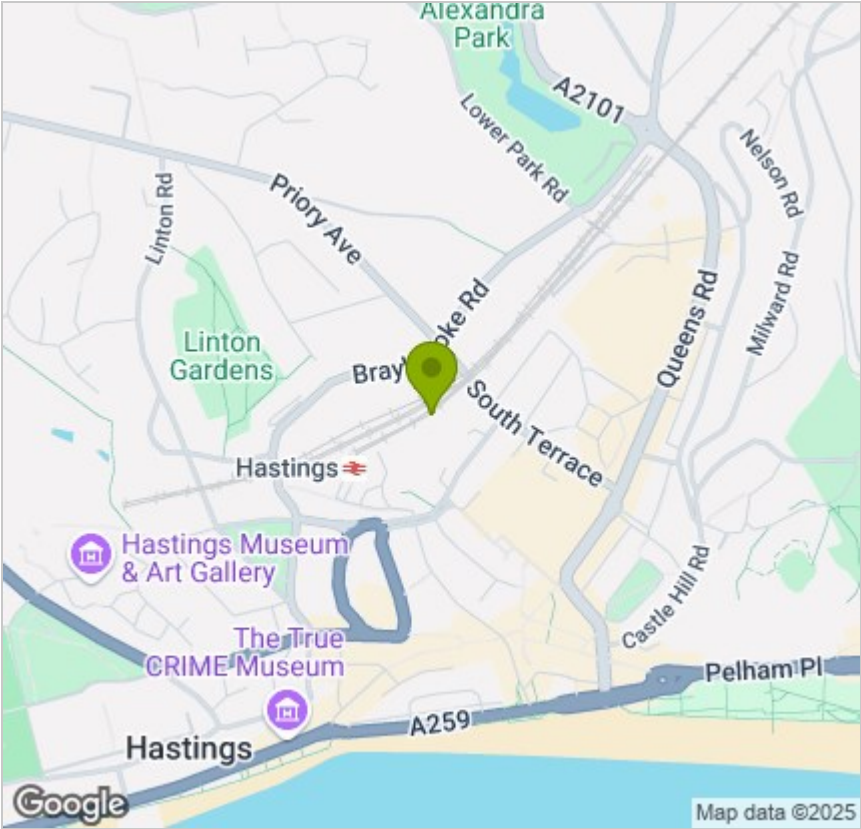


Viewing

Please contact us on 01424 446644 if you wish to arrange a viewing appointment for this property or require further information.

These particulars, whilst believed to be accurate are set out as a general outline only for guidance and do not constitute any part of an offer or contract. Intending purchasers should not rely on them as statements of representation of fact, but must satisfy themselves by inspection or otherwise as to their accuracy. No person in this firms employment has the authority to make or give any representation or warranty in respect of the property.

Area Map



Energy Efficiency Graph

