



OAKFIELD

OCEAN HOUSE

OCEAN  
HOUSE

London Road, St. Leonards-On-Sea, TN37 6FL

£1,225 Per Calendar Month



2



1



1



C

## London Road, St. Leonards-On-Sea, TN37 6FL

We are delighted to offer a selection of 2-bed flats in Ocean House.

All flats have newly fitted modern kitchens with integrated appliances (washer / dryer, fridge / freezer, dishwasher, electric oven and hob), fitted blinds, newly fitted modern bathroom suites and are finished to a high standard.

Additional benefits include: working intercom, modern electric heating, staircase and two lifts to all floors, a parcel room for deliveries open 24/7, and on-site caretaker and fibre broadband.

The majority of the flats offer spectacular far reaching roof top views towards the sea and are just a 5 minute walk from the beach and mainline St Leonards Warrior Square station. There is also an abundance of independent shops and restaurants, with high street shops a short distance in Hastings town centre.

Minimum Tenancy Term: 12 months  
Available Now  
Annual Income Threshold: £36,750





**Living Room / Kitchen**

18'3" (narrowing to 11'9") x 17'10"  
(narrowing to 5.58 (narrowing to 3.59) x  
5.45 (narrowing to 2.12)

**Bedroom 1**

13'10" (narrowing to 3'7") x 11'8"  
(narrowing to 9 (4.24 (narrowing to 1.11)  
x 3.57 (narrowing to 2.89)

**Bedroom 2**

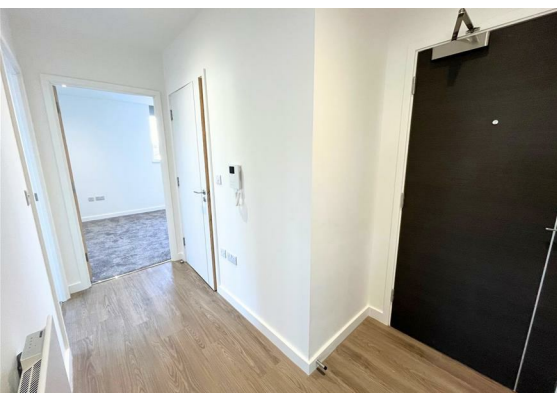
13'1" x 9'10" (4.00 x 3.02)

**Bathroom**

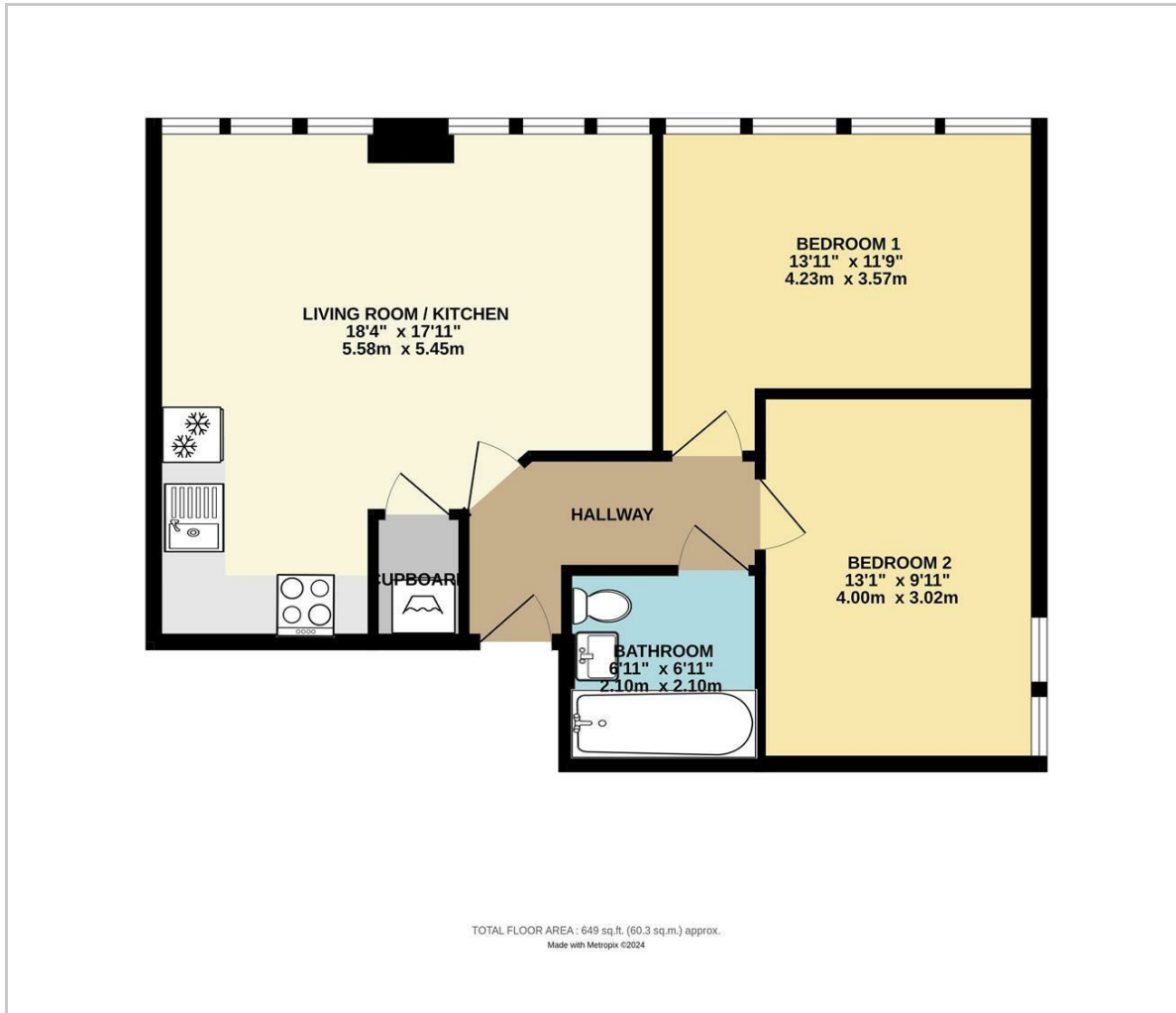
6'10" x 6'10" (2.10 x 2.10 )

**Council Tax Band**

**Lift and stairs to all floors**



## Floor Plan

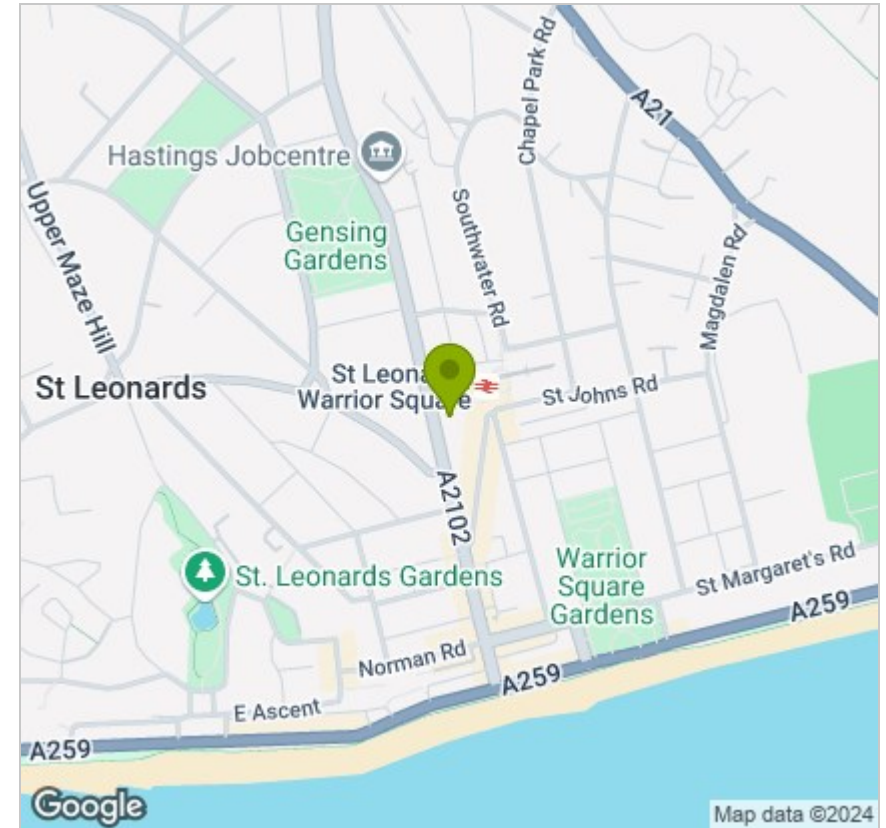


## Viewing

Please contact us on 01424 446644 if you wish to arrange a viewing appointment for this property or require further information.

These particulars, whilst believed to be accurate are set out as a general outline only for guidance and do not constitute any part of an offer or contract. Intending purchasers should not rely on them as statements of representation of fact, but must satisfy themselves by inspection or otherwise as to their accuracy. No person in this firm's employment has the authority to make or give any representation or warranty in respect of the property.

## Area Map



## Energy Efficiency Graph

