



OAKFIELD



Honeysuckle Close, TN37 7LX  
£1,100 Per Calendar Month





## Honeysuckle Close, TN37 7LX

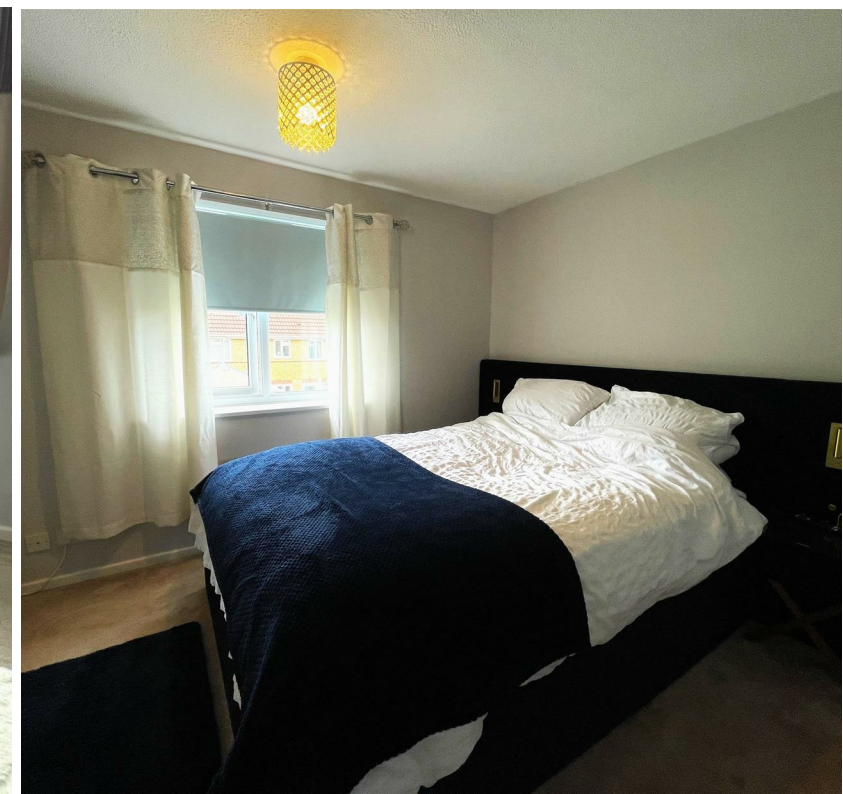
Introducing this stunning two-bedroom mid-terraced house, in the "Little Ridge" area of St Leonards on Sea. This modern home features a conservatory, enhancing the living space and providing a perfect spot to relax. The kitchen and bathroom are thoughtfully designed, for you and your family. The property is just a four minute walk to Tesco Express and a seven minute walk to ARK Little Ridge Primary.

Both bedrooms are generously sized, offering comfortable living spaces for you and your family. The property also boasts a convenient driveway.

Situated in a highly desirable area, this home is surrounded by excellent local schools and shops, making everyday life convenient and enjoyable.

With its modern amenities, ideal location, and loving upkeep, this property is not just a house; it's a place where memories are made.

Please note:  
Available from 31st July 2024  
Minimum tenancy length 12 months  
Household income threshold: £33,000  
Pets are considered upon negotiation and, where accepted, at an extra £25pcm.







**Living Room**  
14'0" x 12'0" (4.27m x 3.68m)

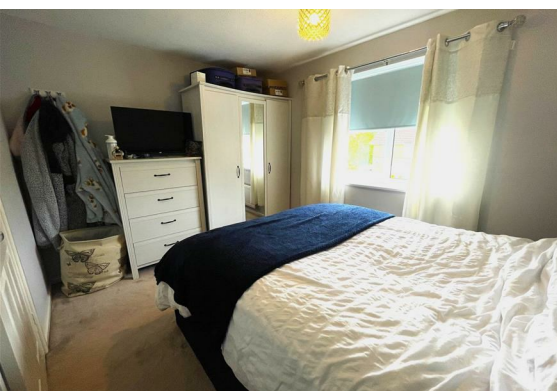
**Kitchen**  
10'0" x 7'4" (narrowing to 5'4") (3.05m x 2.26m (narrowing to 1.65m))

**Bedroom One**  
11'8" x 8'7" (3.56m x 2.64m)

**Bedroom Two**  
11'8" x 8'3" (narrowing to 6'2") (3.56m x 2.54m (narrowing to 1.88m))

**Bathroom**  
6'7" x 5'6" (2.02m x 1.68m)

**Council Tax Band B - £1,895.81**





## Floor Plan



## Viewing

Please contact us on 01424 446644 if you wish to arrange a viewing appointment for this property or require further information.

These particulars, whilst believed to be accurate are set out as a general outline only for guidance and do not constitute any part of an offer or contract. Intending purchasers should not rely on them as statements of representation of fact, but must satisfy themselves by inspection or otherwise as to their accuracy. No person in this firm's employment has the authority to make or give any representation or warranty in respect of the property.

## Area Map



## Energy Efficiency Graph

