



OAKFIELD



Oakfield Road, Hastings, TN35 5AX  
£1,000 Per Calendar Month



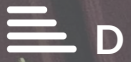
2



1



1



D

## Oakfield Road, Hastings, TN35 5AX

This mid-terraced property is ideally located in the popular residential area of Ore village, close to local shops and bus routes.

As you step inside, you're greeted by a cosy living room that flows into a modern fitted kitchen, complete with an oven/hob and a convenient utility space including a washing machine.

The property boasts two inviting double bedrooms on the first floor, offering ample space for relaxation and rest. The modern bathroom features a shower over the bath.

One of the highlights of this lovely home is the rear courtyard garden.

With gas central heating and double glazing throughout, this house ensures warmth and comfort all year round.

Don't miss the opportunity to make this house your home in the heart of Hastings.

Please Note:  
The minimum term length for this property is 12 months.  
An annual household income of £30,000 will be required for the affordability for this property.  
Available 01 July 2024





### Kitchen

12'9" x 12'5" (3.9 x 3.8)

### Living room

12'9" x 12'9" (3.9 x 3.9)

### Bathroom

7'6" x 5'6" (2.3 x 1.7)

### Bedroom One

12'9" x 11'5" (3.9 x 3.5)

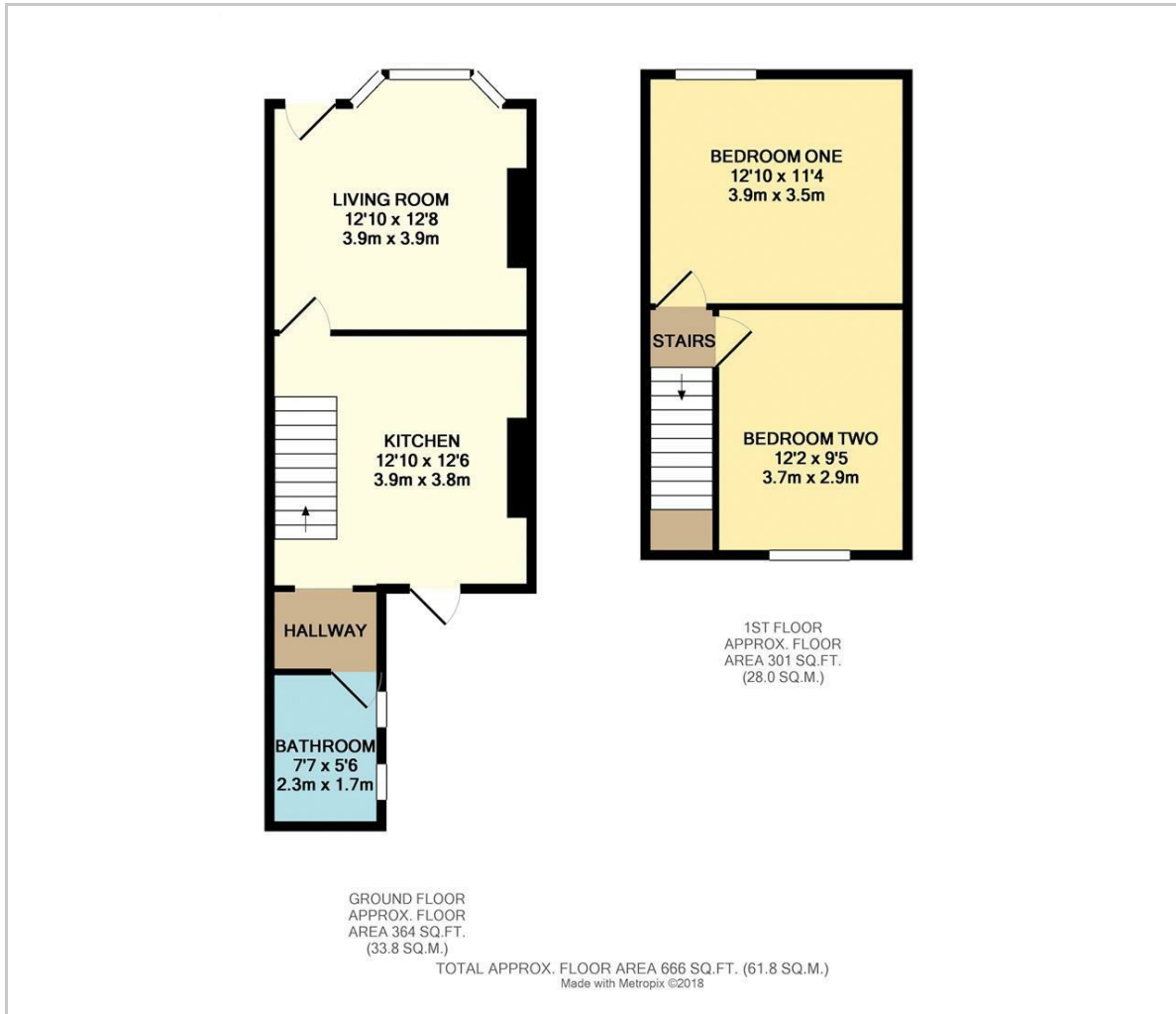
### Bedroom Two

12'1" x 9'6" (3.7 x 2.9)

**Council Tax Band B - £1,895.81 per annum**



## Floor Plan

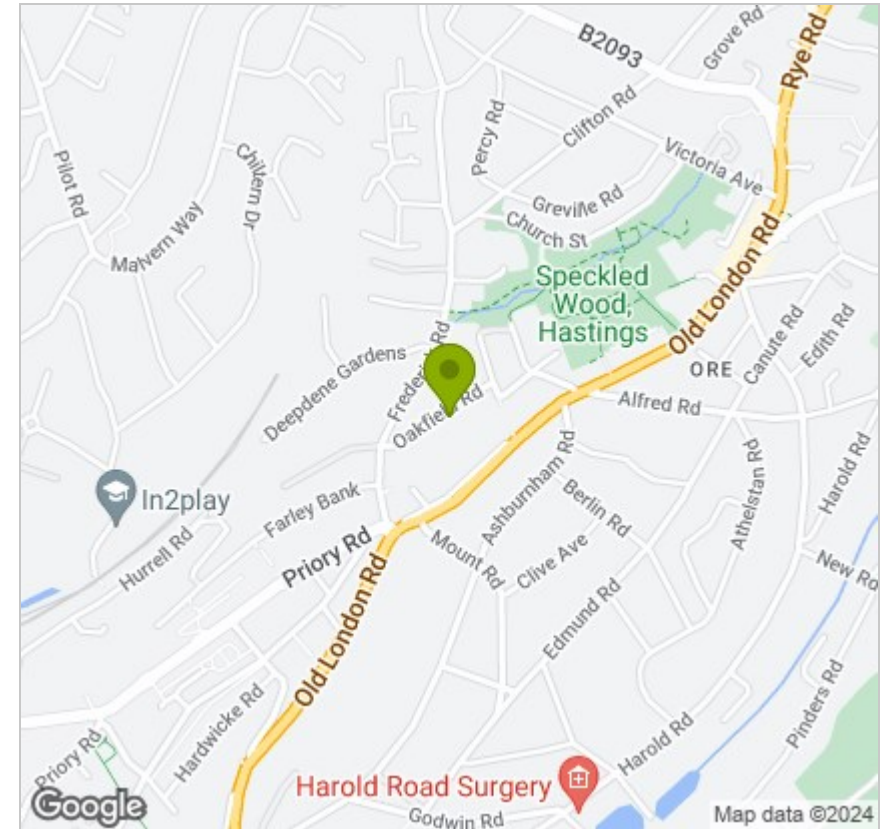


## Viewing

Please contact us on 01424 446644 if you wish to arrange a viewing appointment for this property or require further information.

These particulars, whilst believed to be accurate are set out as a general outline only for guidance and do not constitute any part of an offer or contract. Intending purchasers should not rely on them as statements of representation of fact, but must satisfy themselves by inspection or otherwise as to their accuracy. No person in this firm's employment has the authority to make or give any representation or warranty in respect of the property.

## Area Map



## Energy Efficiency Graph

