



OAKFIELD



Milward Road, Hastings
Asking Price £142,000



Milward Road, Hastings

Well-presented ground floor apartment ideally positioned within close proximity to Hastings town centre where you will find a number of popular restaurants, bars, local amenities and the popular West Hill.

Occupying the ground floor of this characterful building accommodation comprises an entrance hall with storage cupboard, living room with a bay fronted window, one double bedroom with far reaching views across Hastings, separate fitted kitchen with modern style units and a fitted shower room with walk in shower cubicle, wash hand basin and WC.

This property further benefits from characterful features like high ceilings and original skirting, good length of lease, entry phone system and internal storage cupboard.

Viewing is highly recommended to see this properties full potential!





Living Room
13'5" x 10'2" (4.1 x 3.1)

Bedroom
15'1" x 11'9" (4.6 x 3.6)

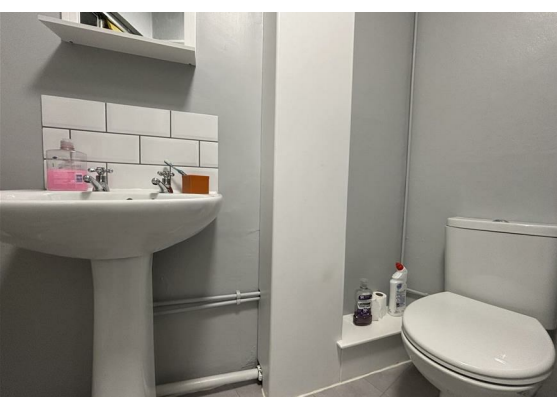
Kitchen
6'10" x 5'6" (2.1 x 1.7)

Shower Room
4'3" x 3'7" (1.3 x 1.1)

Council Tax Band - A £1625

Lease Information

The seller advises that the property is offered as leasehold and has approximately 120 years on the lease. The service charge is approximately £1,900. The agent has not had sight of confirmation documents and therefore the buyer is advised to obtain verification from their solicitor or surveyor.



Floor Plan

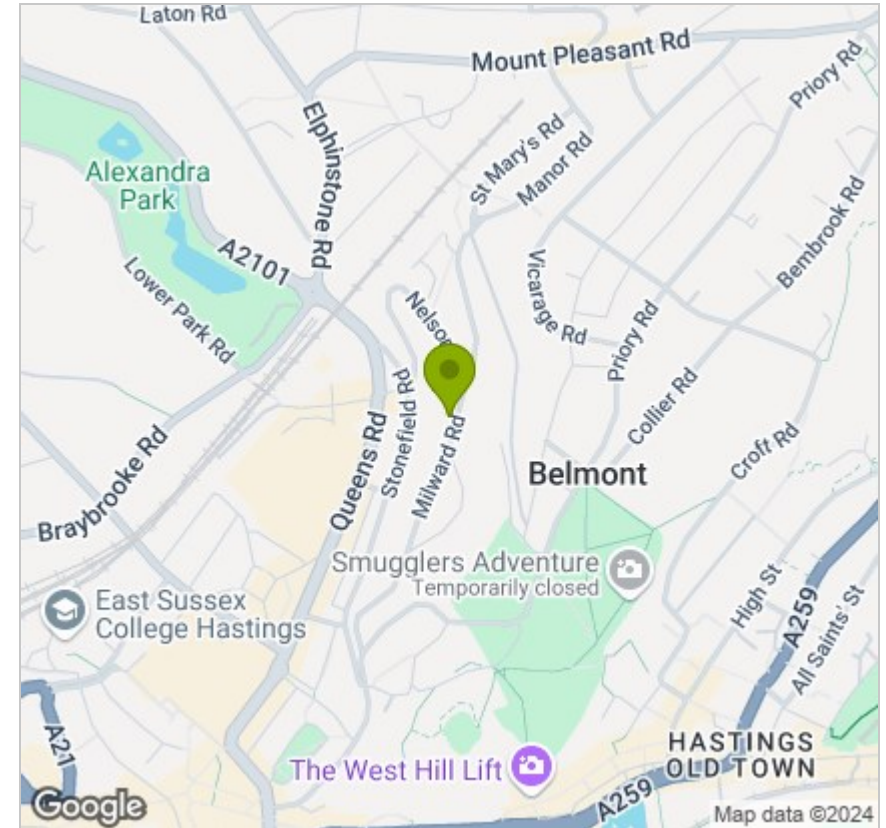


Viewing

Please contact us on 01424 722122 if you wish to arrange a viewing appointment for this property or require further information.

These particulars, whilst believed to be accurate are set out as a general outline only for guidance and do not constitute any part of an offer or contract. Intending purchasers should not rely on them as statements of representation of fact, but must satisfy themselves by inspection or otherwise as to their accuracy. No person in this firm's employment has the authority to make or give any representation or warranty in respect of the property.

Area Map



Energy Efficiency Graph

