

Head Office:
Dixon Kelley Estate Agents
1 Penn Court
Station Road, West Moors
Dorset. BH22 0JJ

DORSET PARK HOMES

DRAFT

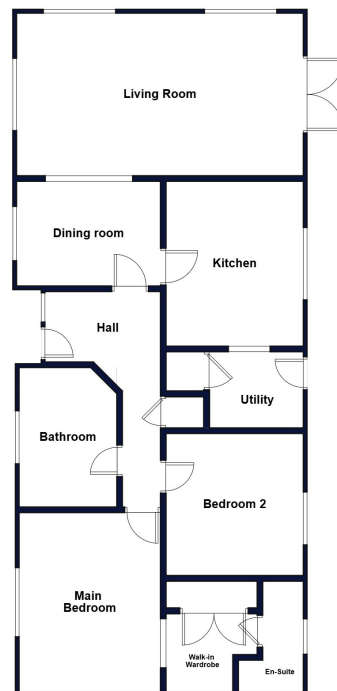
www.dorsetparkhomes.com

Telephone: 01202 877511

1 Knightcrest Park, Milford Road, Everton, Lymington. SO41 0BA



Spacious Park Home with Landscaped Garden



This drawing has been prepared for diagrammatic purpose only. Not to scale.

2-Bedroom Park Home - approx 46' x 20'

Accommodation & approximate room dimensions:

- Wessex Park Home
- Spacious Entrance Hall: Linen cupboard.
- Lounge: approx 19'5" x 11'. Feature fireplace & double Doors to rear garden.
- Dining Area: approx 9'9" x 7'5"
- Kitchen: approx 11'2" x 9'4". Range of floor & wall cupboards. High level oven, hob & hood. Space for fridge/freezer.
- Utility Room: approx 7'9" x 5'2". Plumbing for washing machine. Combination gas boiler. Cloaks cupboard. Door to garden.
- Bedroom 1: approx 12'3" x 9'6" Archway to:
- En-Suite Shower/Dressing Room: Shower cubicle, wash basin & WC. Range of fitted wardrobes.
- Bedroom 2: approx 9'8" x 9'6". Fitted wardrobes.
- Bathroom: Jetted corner bath, wash basin & WC.
- Gas Central Heating (system untested)
- PVCu Double-Glazing
- Delightful Private Garden with patio & lawn. Shed.
- Parking on Plot & GARAGE
- Age Restriction 55+ 1 Dog allowed, no cats
- Beautifully maintained Residential Park close to coast between Lymington & New Milton

Price: £200,000

Delightful Residential Park



Pitch Fee: approx. £263.20 per month
Subject to Annual Review
Council Tax Band: 'A'

Tenure: 1983 Mobile Homes Act Agree-

VIEWING STRICTLY BY APPOINTMENT WITH THE VENDOR'S AGENT Dorset & Hampshire Park Homes 01202 877511

IMPORTANT NOTE: These particulars are believed to be correct but their accuracy is not guaranteed. They do not form part of any contract. Nothing in these particulars shall be deemed to be a statement that the property is in good structural condition or otherwise, nor that any of the services, appliances, equipment or facilities are in good working order or have been tested. Purchasers should satisfy themselves on such matters prior to purchase. Ref.W05177

The recommended specialist in Park Home sales
Partners: Simon Dixon & Matthew Dixon

