

**Head Office:**  
Dixon Kelley Estate Agents  
1 Penn Court  
Station Road, West Moors  
Dorset. BH22 0JJ

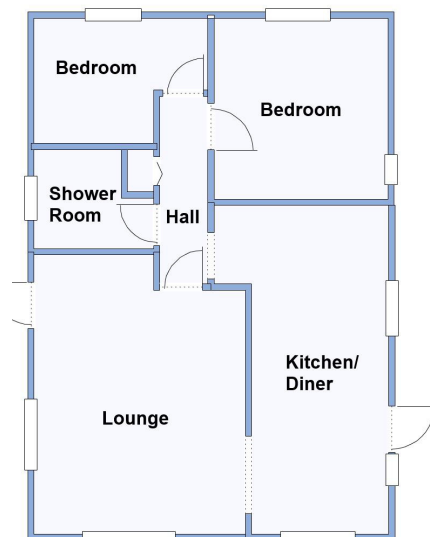
**Telephone: 01202 877511**

# DORSET PARK HOMES

**DRAFT**

[www.dorsetparkhomes.com](http://www.dorsetparkhomes.com)

**9 Wheatplot, Wimborne Road, Bournemouth, Dorset. BH10 7BN**



This drawing has been prepared for diagrammatic purpose only. Not to scale.

## Twin Unit Park Home in need of improvement

### 2-Bedroom Park Home - approx 30' x 20'

Accommodation & approximate room dimensions:

- Omar Park Home circa 1980
- Kitchen/Diner: approx 17'7" x 9'3" max. Range of floor cupboards. Gas hob. Plumbing for washing machine. Space for fridge/freezer. Wall mounted combination gas boiler (untested). Ample space for dining suite. Door to garden.
- Lounge: approx 14'9" x 10'8". Door to rear garden. Feature fireplace.
- Inner Hall: Cloaks cupboard.
- Bedroom 1: approx 9'9" x 9'4"
- Bedroom 2: approx 9'4" x 6'9" max.
- Bathroom: Panelled bath with mixer tap & shower attachment. Pedestal wash basin. WC.
- Gas Central Heating (system untested).
- PVCu Double-Glazing
- Private Garden with Metal Shed.
- Parking on Plot
- Age Restriction 45+ Pets Considered
- Small Residential Park near to local amenities and within easy reach of Bournemouth town centre & award winning coast.

## Parking on Plot



Kitchen/Diner



Lounge



Bathroom



Garden

**Price: £55,000**

**Pitch Fee: approx £199.32 per month**

**Subject to Annual Review**

**Council Tax Band: 'A'**

**Tenure: 1983 Mobile Homes Act Agreement**

**VIEWING STRICTLY BY APPOINTMENT WITH THE VENDOR'S AGENT Dorset Park Homes 01202 877511**

**IMPORTANT NOTE:** These particulars are believed to be correct but their accuracy is not guaranteed. They do not form part of any contract. Nothing in these particulars shall be deemed to be a statement that the property is in good structural condition or otherwise, nor that any of the services, appliances, equipment or facilities are in good working order or have been tested. Purchasers should satisfy themselves on such matters prior to purchase Ref.W04932

*The recommended specialist in Park Home sales*  
Partner: Simon Dixon

