

**Head Office:**  
Dixon Kelley Estate Agents  
1 Penn Court  
Station Road, West Moors  
Dorset. BH22 0JJ

**Telephone: 01202 877511**

# DORSET PARK HOMES

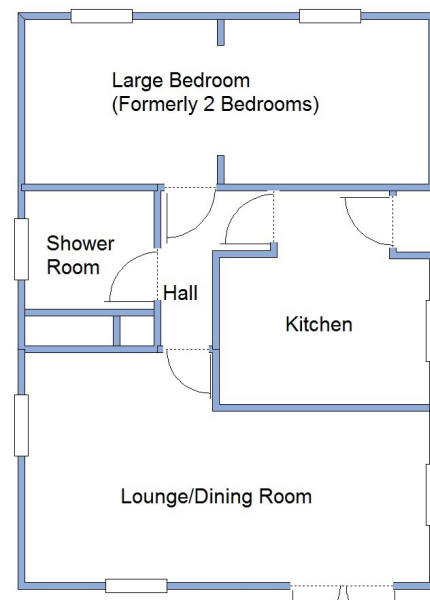
**DRAFT**

[www.dorsetparkhomes.com](http://www.dorsetparkhomes.com)

**50 Doveshill Park, Barnes Road, Ensbury Park, Bournemouth. BH10 5AJ**



**Tingdene Twin Unit Park Home manufactured 2003**



This drawing has been prepared for diagrammatic purpose only. Not to scale.

## 1-Bedroom Park Home - approx 28' x 20'

**Accommodation & approximate room dimensions:**

**A 2-bedroom home currently arranged as 1 bedroom.**

- 'Tingdene Park Home' 2003
- Kitchen: approx 10'4" x 9'5". Range of floor and wall cupboards. Built in oven & hob with cooker hood over (untested). Cupboard housing Worcester combination boiler (untested). Plumbing for washing machine. Space for fridge.
- Lounge/Dining Room: approx 19'6" x 11'3" max. Feature fireplace. PVCu double glazed bay window. Double doors to front aspect.
- Inner Hall
- Double Bedroom: approx 19'6" x 8'1". (formerly 2 bedrooms). Built in wardrobes and centre drawer unit.
- Shower Room: Double sized shower cubicle with thermostatic shower fitted (untested). Pedestal wash basin & WC. Airing cupboard.
- PVCu Double Glazing
- Gas Central Heating (system untested)
- Patio Garden with Shed
- Parking on a rental basis subject to availability
- Age Restriction 55+ No Pets Allowed

**Price: £95,000**

**VIEWING STRICTLY BY APPOINTMENT WITH THE VENDOR'S AGENT Dorset Park Homes 01202 877511**

**IMPORTANT NOTE:** These particulars are believed to be correct but their accuracy is not guaranteed. They do not form part of any contract. Nothing in these particulars shall be deemed to be a statement that the property is in good structural condition or otherwise, nor that any of the services, appliances, equipment or facilities are in good working order or have been tested. Purchasers should satisfy themselves on such matters prior to purchase Ref.W04930

## Close to Shops & Services



**Kitchen**



**Lounge**



**Bedroom**



**Shower Room**

**Pitch Fee: approx £247.11 per month. Water & Sewerage approx £15 pm  
Subject to Annual Review  
Council Tax Band: 'A' Tenure: 1983 Mobile Homes Act Agreement**

*The recommended specialist in Park Home sales*  
Partner: Simon Dixon

