

Head Office:
Dixon Kelley Estate Agents
1 Penn Court
Station Road, West Moors
Dorset. BH22 0JJ

DORSET PARK HOMES

DRAFT

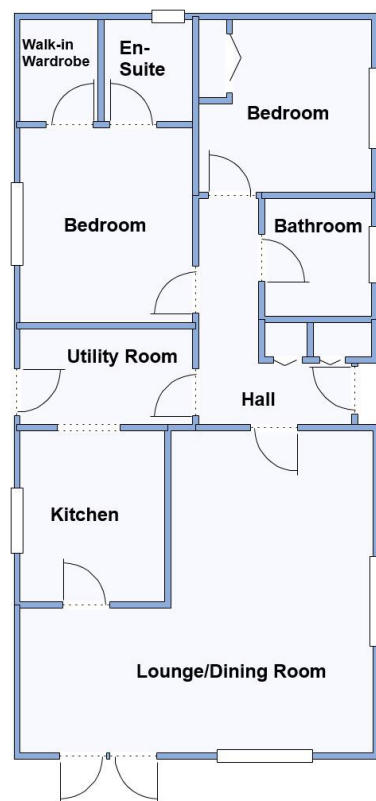
www.dorsetparkhomes.com

Telephone: 01202 877511

189 Pinehurst Park, West Moors, Dorset. BH22 0BS



Superb Park Home backing onto Nature Reserve



This drawing has been prepared for diagrammatic purpose only. Not to scale

2 Bedroom Park Home approx 40' x 20'

Accommodation & approximate room dimensions:

- Omar 'Middleton' circa 2020
- Entrance Hall: Cloaks & linen cupboard. Hatch to roof.
- Lounge/Dining: approx 18'9" x 17'2" overall max. Feature fireplace. 2 Bay windows & double doors to Raised Deck.
- Kitchen: approx 9'1" x 7'8". Range of floor and wall cupboards. Built-in double oven & hob with extractor fan over. Integrated fridge/freezer & dishwasher.
- Utility Room: approx 9'2" x 5'1". Integrated washer/dryer. Cupboard housing combination gas boiler. Door to garden.
- Bedroom 1: approx 10'4" x 9'3" Plus Walk-in wardrobe.
- En-Suite Shower Room
- Bedroom 2: approx 9'2" x 9'2". Built-in wardrobe.
- Bathroom: Panelled bath. Vanity wash basin & WC.
- Gas Central Heating & PVCu Double-Glazing
- Highly Insulated Modern Home
- Parking on Plot for 2/3 cars. Substantial Metal Shed
- Large Raised Deck with glass balustrade having a pleasant view of the Nature Reserve
- Age Restriction 45+ Pets Considered
- Popular Residential Park near to local amenities & close to protected nature walks.

Beautifully Presented



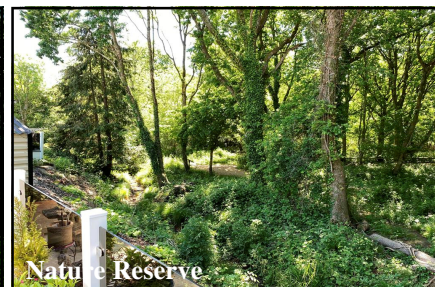
Quality Kitchen



Large Lounge/Dining Room



Raised Deck



Nature Reserve

Price £235,000

VIEWING STRICTLY BY APPOINTMENT WITH THE VENDOR'S AGENT Dorset Park Homes 01202 877511

IMPORTANT NOTE: These particulars are believed to be correct but their accuracy is not guaranteed. They do not form part of any contract. Nothing in these particulars shall be deemed to be a statement that the property is in good structural condition or otherwise, nor that any of the services, appliances, equipment or facilities are in good working order or have been tested. Purchasers should satisfy themselves on such matters prior to purchase Ref.W04927

Pitch Fee: approx £319.02 per month including water

Subject to Annual Review

Council Tax Band: 'A'

Tenure: 1983 Mobile Homes Act Agreement

The recommended specialist in Park Home sales
Proprietor: Simon Dixon

