

Head Office:
Dixon Kelley Estate Agents
1 Penn Court
Station Road, West Moors
Dorset. BH22 0JJ

DORSET PARK HOMES

DRAFT

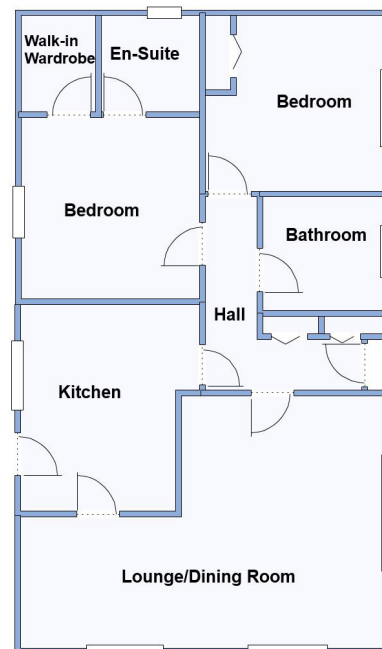
www.dorsetparkhomes.com

Telephone: 01202 877511

99 The Crescent, Oaktree Park, St Leonards, Ringwood. BH24 2RP



Modern (2015) 'Omar Middleton' Park Home



This drawing has been prepared for diagrammatic purpose only. Not to scale.

2-Bedroom Park Home - approx 37' x 22'

Accommodation & approximate room dimensions:

- **Hall:** Cloaks cupboard & Linen cupboard.
- **Kitchen:** approx 11'11" x 10'3" max. Excellent range of base & wall cupboards. Built-in oven, hob & cooker hood. Integrated fridge/freezer, dishwasher & washing machine. Cupboard housing combination gas boiler. Door to garden.
- **Lounge/Dining Room:** approx 21'2" x 14'7" max. Feature fireplace. 3 Bay windows.
- **Bedroom 1:** approx 10'6" x 10'3" Plus Walk-in wardrobe.
- **Quality En-Suite Shower Room**
- **Bedroom 2:** approx 10'4" x 10'1". Fitted wardrobe
- **Bathroom:** Luxury suite comprising panelled bath. Vanity wash basin & WC. Chrome towel rail.
- **Central Heating & Double-Glazing**
- **Highly Insulated Home & LED Lighting**
- **Parking on Plot + Delightful Private Garden. Metal Shed**
- **Age Restriction 50+ Pets Considered**
- **Residents Members Club on Park**
- **Popular Park between Ringwood & Ferndown and adjacent to protected forestry land. Useful convenience store in neighbouring holiday park.**

Price: £200,000

VIEWING STRICTLY BY APPOINTMENT WITH THE VENDOR'S AGENT Dorset Park Homes 01202 877511

IMPORTANT NOTE: These particulars are believed to be correct but their accuracy is not guaranteed. They do not form part of any contract. Nothing in these particulars shall be deemed to be a statement that the property is in good structural condition or otherwise, nor that any of the services, appliances, equipment or facilities are in good working order or have been tested. Purchasers should satisfy themselves on such matters prior to purchase Ref.W04921

'Popular 'Pet Friendly' Park



Pitch Fee: approx £238.65 per month
Subject to Annual Review
Council Tax Band: 'A'

Tenure: 1983 Mobile Homes Act Agreement

The recommended specialist in Park Home sales
Partner: Simon Dixon

