

Head Office:

1 Penn Court
Station Road
West Moors
Dorset
BH22 0JJ

Tel: 01202 877511

Email: info@dorsetparkhomes.com



DORSET PARK HOMES

Lady Bailey Park Winterborne Whitechurch, Blandford, Dorset DT11 0HS

Luxury Homes ready for early occupation!



**First Phase of a New Development
of High Quality Park Homes**

A Selection of New Residential Park Homes

Set on the outskirts of Blandford, this exceptional new development is an extension of a long established family run park nestled in the Dorset Countryside. Some plots have far reaching views over farmland.

As each home arrives, this development will simply get better and better, ending up with a wonderful high quality Residential Park having a cluster of spacious, high specification Park Homes, many with far reaching views, good-sized plots & 'On-Plot' Parking. Well behaved pets will be considered.

Draft Particulars

- **Residential Park for all year living**
- **Pet Friendly—simple conditions apply—please enquire for more information**
- **10 year Warranty & Stylish Interiors & Fully Furnished**
- **Parking—'On-Plot'**
- **Council Tax: 'A' Band**
- **No Stamp Duty**
- **Age Restriction 50 Plus**
- **Pitch Fee approx £38 per week. Sewerage £2.20 per week.**
- **High Specification, Stylish Interior & Fully Furnished Park Homes of various designs & sizes**
- **Water & Electric metered. LPG Gas.**



**Lady Bailey Park
Dorchester Hill
Winterborne Whitechurch
Blandford, Dorset. DT11 0HS**

**Prices From
£165,000**

Whether you are looking for a Contemporary 'Open-Plan' Home or Traditional Park Home, Lady Bailey Park will have the opportunity for you to choose your preferred option. All homes will be of a high standard, with stylish interior designs and fully furnished for immediate use, once completed on site.

Set on the stunning Dorset countryside, yet accessible to surrounding towns, villages & coastline, Lady Bailey Park is the ideal location. All homes will be energy efficient, come with an outstanding specification and a warranty for peace of mind.

**Viewing by Appointment Only
Telephone: 01202 877511**

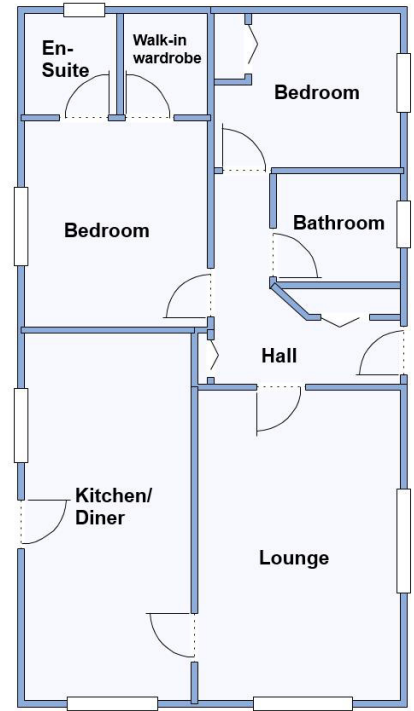


- **Hall**
- **Superb Kitchen/Diner with integrated appliances**
- **Large Lounge**
- **2 Double Bedrooms**
- **En-Suite Shower Room & Bathroom**
- **Gas Central Heating & Double-Glazing**
- **Fully Furnished**
- **Parking on Plot**

SOLD



Lounge: approx 15'10" x 10'4"
 Kitchen/Diner: approx 18'9" x 8'6"
 Bedroom 1: approx 10'6" x 9'3"
 Bedroom 2: approx 9'4" x 7'10"



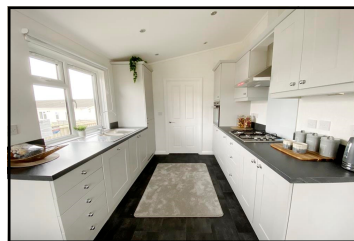
This drawing has been prepared for diagrammatic purposes only. Not to scale

Stylish Interior Designs & Fully Furnished

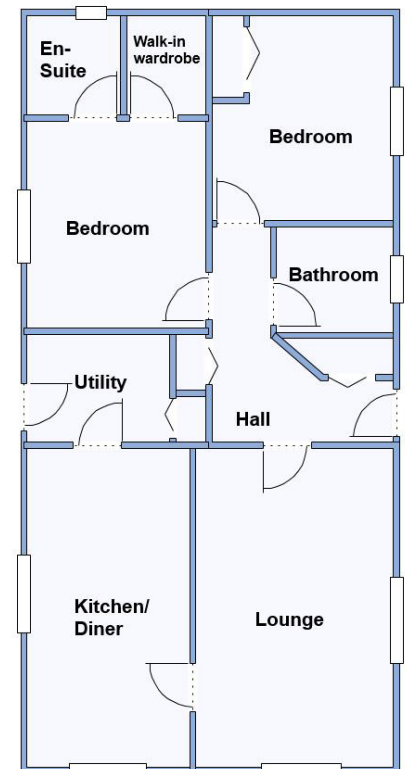


- **Hall**
- **Spacious Lounge**
- **Stunning Kitchen/Diner with Integrated appliances & Utility Room**
- **2 Double Bedrooms**
- **En-Suite Shower Room & Bathroom**
- **Fully Furnished**
- **Gas Central Heating & Double-Glazing**
- **Parking on Plot**

Price: £199,950



Lounge: approx 16'8" x 10'4"
 Kitchen/Diner: approx 16'7" x 8'6"
 Utility Room: approx 7'5" x 5'6"
 Bedroom 1: approx 10'10" x 9'4"
 Bedroom 2: approx 10'10" x 9'2"

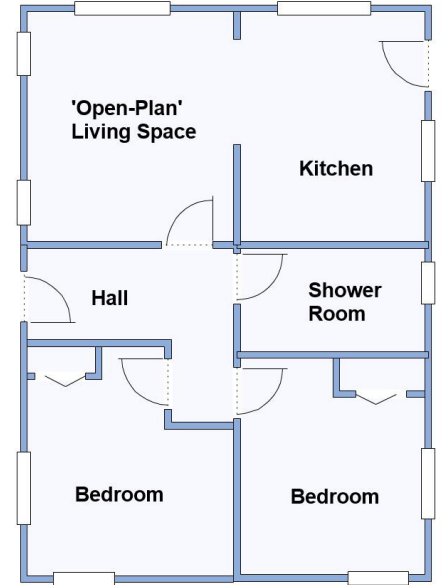


This drawing has been prepared for diagrammatic purposes only. Not to scale

IMPORTANT NOTE: These particulars are believed to be correct but their accuracy is not guaranteed. They do not form part of any contract. Nothing in these particulars shall be deemed to be a statement that the property is in good structural condition or otherwise, nor that any of the services, appliances, equipment or facilities are in good working order or have been tested. Purchasers should satisfy themselves on such matters prior to purchase.



'Open-Plan' Living Space:
approx 11'3" x 9'
Kitchen/Diner: approx 11'3 x 9'
Bedroom 1: approx 11' x 9'
Bedroom 2: approx 11' x 9' max



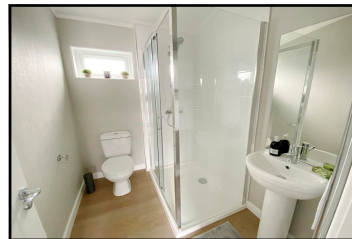
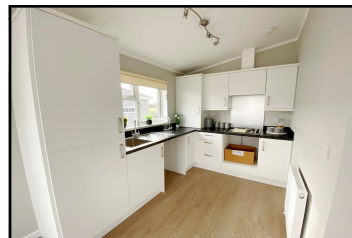
This drawing has been prepared for diagrammatic purposes only. Not to scale

- Hall
- Superb Kitchen/Diner with lovely views & integrated appliances
- 'Open-Plan' Living Space
- 2 Double Bedrooms
- Luxury Shower Room
- Gas Central Heating & Double-Glazing
- Fully Furnished
- Good-Sized Garden
- Parking on Plot

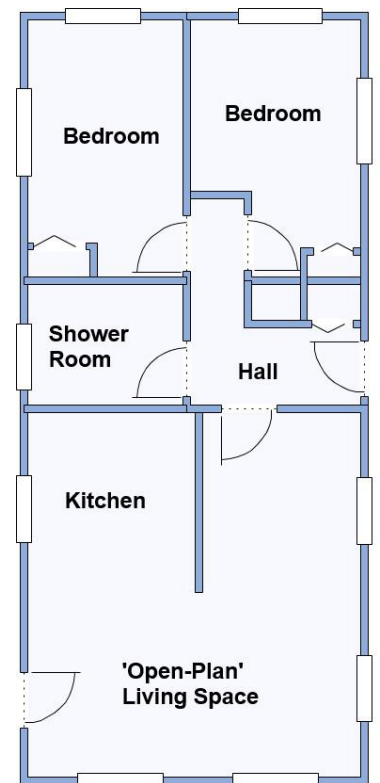
Price £166,000

Reserved

Stylish Interior Designs & Fully Furnished



'Open-Plan' Living Space:
approx 16'4" x 15'
Kitchen Area: approx 8' x 7'7"
Bedroom 1: approx 11'7" x 7'
Bedroom 2: approx 11'7" x 7' max



This drawing has been prepared for diagrammatic purposes only. Not to scale

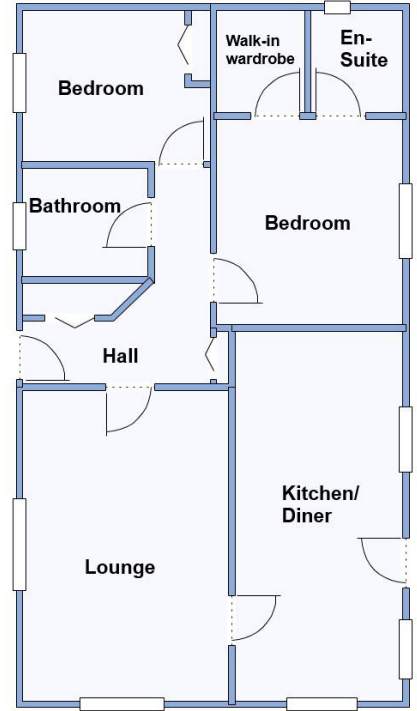
- Hall
- Spacious 'Open-Plan' Living Space
- Kitchen with Integrated appliances
- 2 Double Bedrooms
- Luxury Shower Room
- Fully Furnished
- Gas Central Heating & Double-Glazing
- Parking on Plot

Price: £159,950

IMPORTANT NOTE: These particulars are believed to be correct but their accuracy is not guaranteed. They do not form part of any contract. Nothing in these particulars shall be deemed to be a statement that the property is in good structural condition or otherwise, nor that any of the services, appliances, equipment or facilities are in good working order or have been tested. Purchasers should satisfy themselves on such matters prior to purchase.



Lounge: approx 16'10" x 10'4"
 Kitchen/Diner: approx 19'10" x 8'6"
 Bedroom 1: approx 11'7" x 9'4"
 Bedroom 2: approx 9' x 8'9"



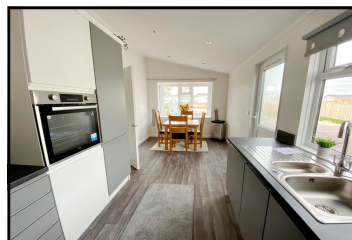
This drawing has been prepared for diagrammatic purposes only. Not to scale

- Hall
- Superb Kitchen/Diner with integrated appliances & lovely views
- Large Lounge
- 2 Double Bedrooms
- En-Suite Shower Room & Bathroom
- Gas Central Heating & Double-Glazing
- Fully Furnished
- Parking on Plot

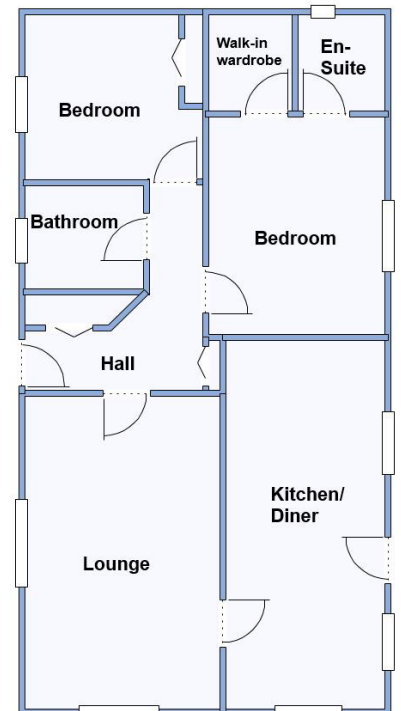
Price £215,000

Reserved

Stylish Interior Designs & Fully Furnished



Lounge: approx 15'9" x 10'4"
 Kitchen/Diner: approx 18'8" x 8'6"
 Bedroom 1: approx 10'5" x 9'4"
 Bedroom 2: approx 8'9" x 7'8"



This drawing has been prepared for diagrammatic purposes only. Not to scale

- Hall
- Spacious Lounge
- Stunning Kitchen/Diner with Integrated appliances
- 2 Double Bedrooms
- En-Suite Shower Room & Bathroom
- Gas Central Heating & Double-Glazing
- Parking on Plot

Price: £210,000

SOLD

IMPORTANT NOTE: These particulars are believed to be correct but their accuracy is not guaranteed. They do not form part of any contract. Nothing in these particulars shall be deemed to be a statement that the property is in good structural condition or otherwise, nor that any of the services, appliances, equipment or facilities are in good working order or have been tested. Purchasers should satisfy themselves on such matters prior to purchase.

Plot 42

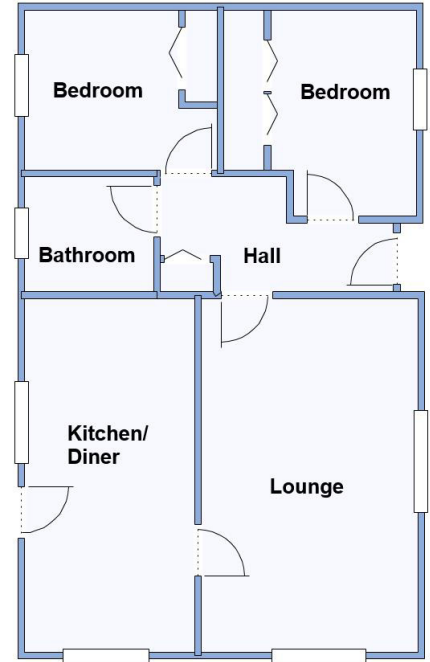


Stately 'Fredeger Elite' approx 30' x 18'

- Hall
- Kitchen/Diner with integrated appliances
- Lounge with fireplace
- 2 Double Bedrooms
- Bathroom
- Gas Central Heating & Double-Glazing
- Fully Furnished
- Parking on Plot

Price £165,000

SOLD



Lounge: approx 17'2" x 10'5"
 Kitchen/Diner: approx 17'2" x 8'4"
 Bedroom 1: approx 10' x 9'4" max
 Bedroom 2: approx 9'4" x 7'9"

This drawing has been prepared for diagrammatic purposes only. Not to scale

Stylish Interior Designs & Fully Furnished



Residential Park in Rural Setting

Quality Homes with 'On-Plot' Parking



IMPORTANT NOTE: These particulars are believed to be correct but their accuracy is not guaranteed. They do not form part of any contract. Nothing in these particulars shall be deemed to be a statement that the property is in good structural condition or otherwise, nor that any of the services, appliances, equipment or facilities are in good working order or have been tested. Purchasers should satisfy themselves on such matters prior to purchase.