

**Head Office:**  
Dixon Kelley Estate Agents  
1 Penn Court  
Station Road, West Moors  
Dorset. BH22 0JJ

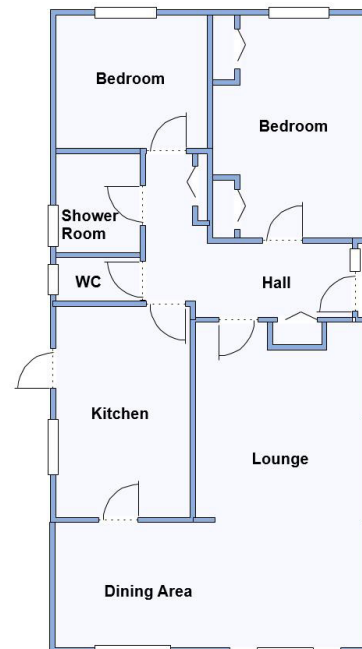
# DORSET PARK HOMES

**DRAFT**

[www.dorsetparkhomes.com](http://www.dorsetparkhomes.com)

**Telephone: 01202 877511**

**24 Sunnyside Park, Ringwood Road, St Ives, Dorset. BH24 2NW**



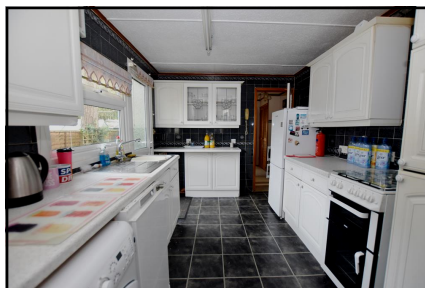
This drawing has been prepared for diagrammatic purpose only. Not to scale.

## 2-Bedroom Park Home - approx 40' x 20'

Accommodation & approximate room dimensions:

- Ercoll Park Home circa 1979
- Hall: Cloaks cupboard & Storage Cupboards
- Kitchen: approx 13'4" x 8'5". Range of floor and wall cupboards. Space for cooker, washing machine, dishwasher & fridge/freezer. Cupboard housing Worcester combination gas boiler. Door to garden.
- Lounge/Dining Room: approx 20'7" x 19'7" max. Patio doors to front elevation.
- Bedroom 1: approx 14'1" x 9'8". Fitted wardrobes.
- Bedroom 2: approx 9'7" x 8'5". Fitted cupboards.
- Shower Room: Shower cubicle with Mira electric shower unit. Vanity wash basin & WC.
- Cloakroom: WC & wash basin.
- Gas Central Heating (system untested)
- PVCu Double-Glazing
- Delightful Private Patio Garden with shed & greenhouse. Backing onto protected woodland.
- Allocated Parking Space
- Age Restriction 45+ 1 Small Dog Considered
- Small Residential Park near to Ringwood with access to protected forestry land.

## Spacious Park Home



**Pitch Fee: approx £207.52 per month including water**  
**Subject to Annual Review**  
**Council Tax Band: 'A'**      **Tenure; 1983 Mobile Homes Act Agreement**

**Price: £125,000**

**VIEWING STRICTLY BY APPOINTMENT WITH THE VENDOR'S AGENT Dorset Park Homes 01202 877511**

**IMPORTANT NOTE:** These particulars are believed to be correct but their accuracy is not guaranteed. They do not form part of any contract. Nothing in these particulars shall be deemed to be a statement that the property is in good structural condition or otherwise, nor that any of the services, appliances, equipment or facilities are in good working order or have been tested. Purchasers should satisfy themselves on such matters prior to purchase Ref.W04666

*The recommended specialist in Park Home sales*  
Partner: Simon Dixon

