

**Head Office:**  
Dixon Kelley Estate Agents  
1 Penn Court  
Station Road, West Moors  
Dorset. BH22 0JJ

# DORSET PARK HOMES

**DRAFT**

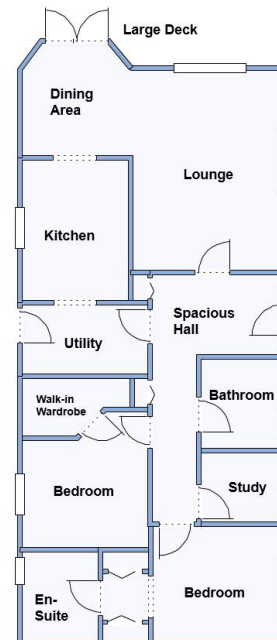
[www.dorsetparkhomes.com](http://www.dorsetparkhomes.com)

**Telephone: 01202 877511**

**26 Jasmine Court, Organford Manor Country Park, Organford, Poole. BH16 6FJ**



**Beautifully Presented Omar 'Sandringham' (circa 2018)**



This drawing has been prepared for diagrammatic purpose only. Not to scale.

## 2-Bedroom Park Home - approx 44' x 20'

Accommodation & approximate room dimensions:

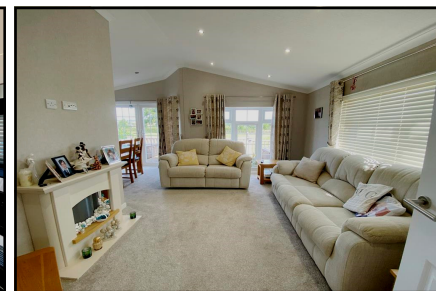
- **Entrance Hall:** Cloaks & Linen cupboard
- **Kitchen:** approx 10'1" x 7'7". Range of floor and wall cupboards. High level oven & microwave. Gas hob & extractor hood. Integrated dishwasher & fridge/freezer. Vaulted ceiling & LED lighting.
- **Utility Room:** Cupboard housing gas boiler. Fitted washing machine. Door to garden. LED lighting.
- **Lounge/Dining Room:** approx 19' x 14'5' max. Feature fireplace. Vaulted ceiling & LED lighting. Double door to Raised Deck. Field views.
- **Study:** approx 5'8" x 5'. Fitted desk unit.
- **Bedroom 1:** approx 9'3" x 8'3" PLUS Dressing Area.
- **Luxury En-Suite Shower Room.**
- **Bedroom 2:** approx 9'1" x 9'9" PLUS Walk-in wardrobe.
- **Luxury Bathroom**
- **Gas Central Heating & PVCu Double-Glazing**
- **Raised Deck & Patio Area with Field Views. Shed**
- **Parking on Plot**
- **Age Restriction 45+ Pets Considered**
- **Beautifully maintained, gated Residential Park with dog walking area. Semi-rural location near to Poole & Wareham.**

**Price: £265,000**

**VIEWING STRICTLY BY APPOINTMENT WITH THE VENDOR'S AGENT Dorset Park Homes 01202 877511**

**IMPORTANT NOTE:** These particulars are believed to be correct but their accuracy is not guaranteed. They do not form part of any contract. Nothing in these particulars shall be deemed to be a statement that the property is in good structural condition or otherwise, nor that any of the services, appliances, equipment or facilities are in good working order or have been tested. Purchasers should satisfy themselves on such matters prior to purchase Ref.W04864

## Large Deck with Field Views



**Pitch Fee: approx £68.70 per week including Water & Sewerage**  
**Subject to Annual Review**  
**Council Tax Band: 'A' Tenure: 1983 Mobile Homes Act Agreement**

*The recommended specialist in Park Home sales*  
Partner: Simon Dixon

