

**Head Office:**  
Dixon Kelley Estate Agents  
1 Penn Court  
Station Road, West Moors  
Dorset. BH22 0JJ

# DORSET PARK HOMES

**DRAFT**

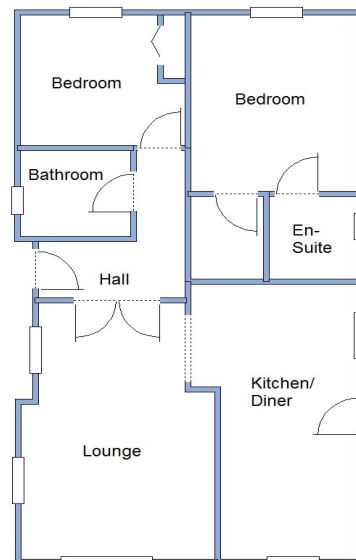
[www.dorsetparkhomes.com](http://www.dorsetparkhomes.com)

**Telephone: 01202 877511**

**70 Dewlands Park, West Close, Verwood, Dorset. BH31 6PR**



**Spacious Park Home in Secluded Position on Park**



This drawing has been prepared for diagrammatic purpose only. Not to scale

## 2 Bedroom Park Home approx 36' x 20'

Accommodation & approximate room dimensions:

- Omar 'Colorado' 2001
- Entrance Hall: Double doors to:
- Lounge: approx 17" x 11'1". Feature fireplace.
- Kitchen/Diner: approx 18'1" x 9'2" max. Modern fitted kitchen with range of floor & wall cupboards. High level fan oven and combination oven/microwave (untested). Ceramic hob & modern cooker hood. Built-in fridge, freezer. Space for dishwasher. Cupboard housing gas fired combination boiler (untested).
- Bedroom 1: approx 11'4" x 9'4" max. Walk-in wardrobe.
- En-Suite: Wet room style shower.
- Bedroom 2: approx 9'4" x 8'5". Double wardrobe.
- Bathroom: Modern white suite.
- Gas Central Heating (system untested)
- PVCu Double-Glazing
- Parking on Plot for 2 cars and Garage.
- Delightful Patio Garden with raised Deck area.
- Age Restriction 50+ Pets Considered
- Popular Residential Park

## Beautifully Presented



**Pitch Fee: approx £210.04 per month**

**Subject to Annual Review**

**Council Tax Band: 'A'**

**Tenure: 1983 Mobile Homes Act Agreement**

**Price £235,000**

**VIEWING STRICTLY BY APPOINTMENT WITH THE VENDOR'S AGENT Dorset Park Homes 01202 877511**

**IMPORTANT NOTE:** These particulars are believed to be correct but their accuracy is not guaranteed. They do not form part of any contract. Nothing in these particulars shall be deemed to be a statement that the property is in good structural condition or otherwise, nor that any of the services, appliances, equipment or facilities are in good working order or have been tested. Purchasers should satisfy themselves on such matters prior to purchase Ref.W04838

*The recommended specialist in Park Home sales*  
Proprietor: Simon Dixon

