

Head Office:
 Dixon Kelley Estate Agents
 1 Penn Court
 Station Road, West Moors
 Dorset. BH22 0JJ

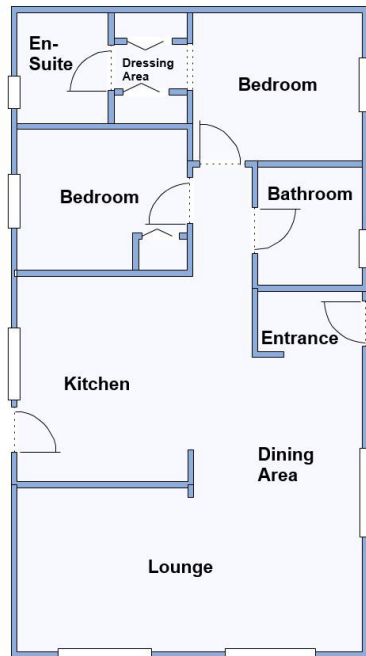
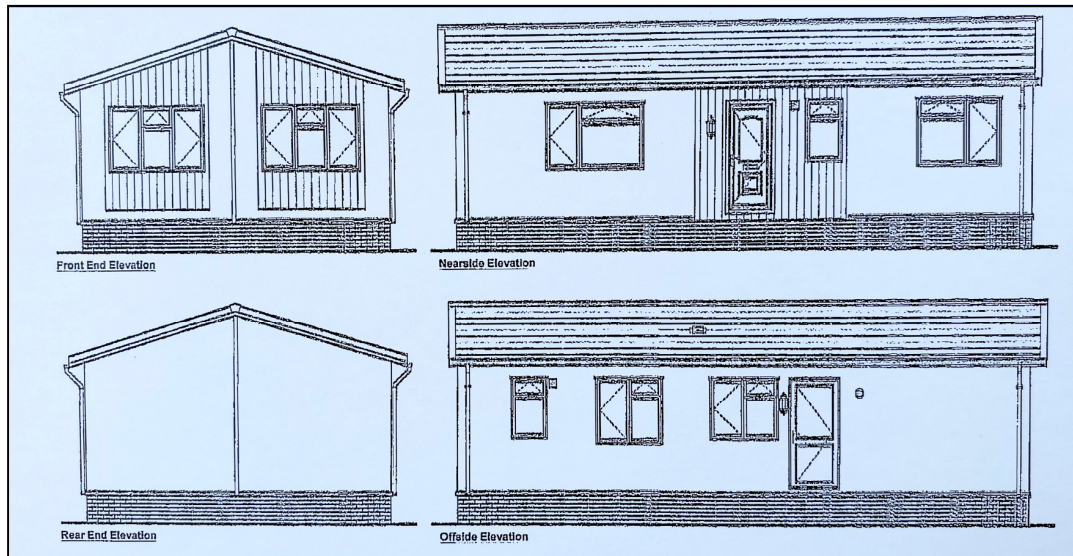
DORSET PARK HOMES

DRAFT

www.dorsetparkhomes.com

Telephone: 01202 877511

40 Doves Hill Park, Barnes Road, Ensbury Park, Bournemouth. BH10 5AJ



NEW HOME—‘Omar Westbury’ —To be sited soon!

This drawing has been prepared for diagrammatic purpose only. Not to scale.

2-Bedroom Park Home - approx 36' x 20'

Accommodation & approximate room dimensions:

- Omar ‘Westbury’ 2024
- Kitchen: approx 11'4" x 9'2". Range of floor and wall cupboards. Built-in oven & hob with cooker hood over. Integrated washing machine, dishwasher & fridge/freezer. Cupboard housing combination boiler. Door to garden.
- Lounge/Dining Room: approx 18'10" x 19'1" overall max. Vaulted ceiling.
- Bedroom 1: approx 9'2" x 8'8" Plus Dressing Area with fitted wardrobe.
- En-Suite Shower Room
- Bedroom 2: approx 9'4" x 7'9". Fitted wardrobe.
- Bathroom
- Gas Central Heating & PVCu Double-Glazing
- Stylish Interior Design & Fully Furnished
- Small Garden
- Parking on rental basis
- Age Restriction 55+ No Pets
- Well maintained Residential Park close to local amenities & Bournemouth Town Centre.

Stylish Interior—Fully Furnished



Price: £220,000

Pitch Fee: approx £240 per month
Subject to Annual Review
Council Tax Band: ‘A’ Tenure: 1983 Mobile Homes Act Agreement

VIEWING STRICTLY BY APPOINTMENT WITH THE VENDOR’S AGENT Dorset Park Homes 01202 877511

IMPORTANT NOTE: These particulars are believed to be correct but their accuracy is not guaranteed. They do not form part of any contract. Nothing in these particulars shall be deemed to be a statement that the property is in good structural condition or otherwise, nor that any of the services, appliances, equipment or facilities are in good working order or have been tested. Purchasers should satisfy themselves on such matters prior to purchase Ref.W04857

The recommended specialist in Park Home sales
 Partner: Simon Dixon

