

Head Office:
Dixon Kelley Estate Agents
1 Penn Court
Station Road, West Moors
Dorset. BH22 0JJ

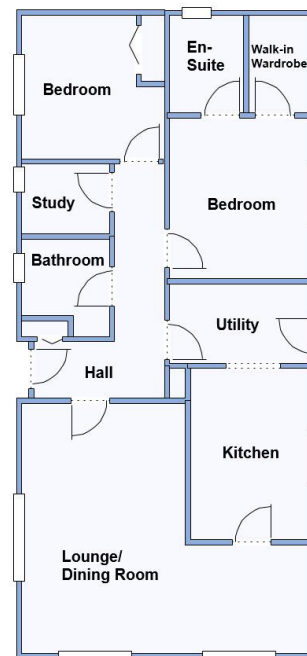
DORSET PARK HOMES

DRAFT

www.dorsetparkhomes.com

Telephone: 01202 877511

94 Woodlands Park, Stopples Lane, New Milton. SO41 0JB



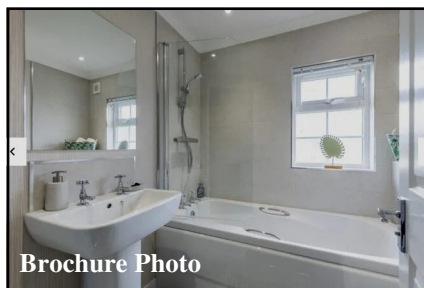
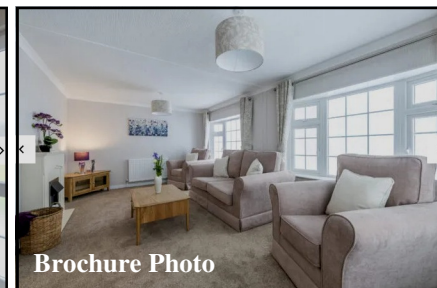
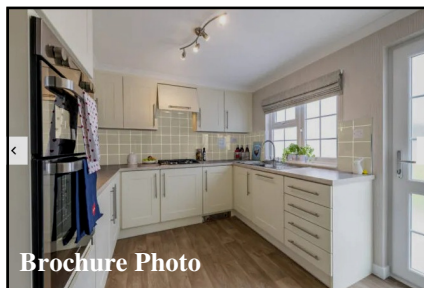
This drawing has been prepared for diagrammatic purpose only. Not to scale.

2-Bedroom Park Home - approx 42' x 20'

Accommodation & approximate room dimensions:

- Entrance Hall
- Kitchen: approx 11' x 7'9". Range of floor and wall cupboards. Built in oven and hob with extractor fan over. Integrated fridge/freezer & dishwasher.
- Utility: approx 7'9" x 5'. Range of cupboards & integrated washing machine.
- Lounge: approx 16'1" x 10'6". Feature fireplace
- Dining Area: approx 7'9" x 7'. Door to kitchen.
- Study: approx 5'8" x 4'5". Fitted desk unit.
- Bedroom: approx 10'4" x 9'1". Walk in wardrobe.
- En-Suite Shower Room.
- Bedroom 2: approx 9'1" x 9'1". Fitted wardrobe.
- Bathroom: Panelled bath, wash basin & WC.
- Gas Central Heating & PVCu Double-Glazing
- Stylish Interior Design & Fully Furnished
- Parking on Plot & Patio Garden
- Age Restriction 50+
- Pets Considered
- Well maintained Residential Park near to local amenities, outstanding coastline and the New Forest National Park.

Fully Furnished



Price: £299,950

Pitch Fee: approx £295.37 pcm

Subject to Annual Review

Council Tax Band: 'A'

Tenure: 1983 Mobile Homes Act Agreement

VIEWING STRICTLY BY APPOINTMENT WITH THE VENDOR'S AGENT Dorset Park Homes 01202 877511

IMPORTANT NOTE: These particulars are believed to be correct but their accuracy is not guaranteed. They do not form part of any contract. Nothing in these particulars shall be deemed to be a statement that the property is in good structural condition or otherwise, nor that any of the services, appliances, equipment or facilities are in good working order or have been tested. Purchasers should satisfy themselves on such matters prior to purchase Ref.W04684

The recommended specialist in Park Home sales
Partner: Simon Dixon

