

Head Office:
Dixon Kelley Estate Agents
1 Penn Court
Station Road, West Moors
Dorset. BH22 0JJ

Telephone: 01202 877511

DORSET PARK HOMES

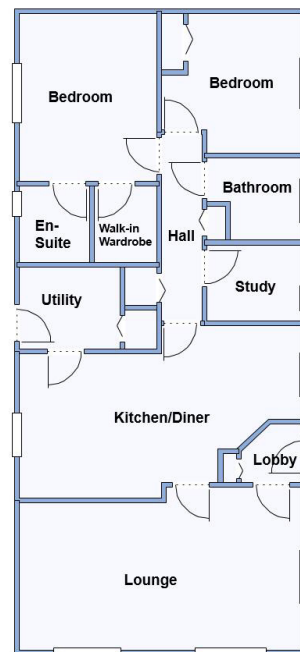
DRAFT

www.dorsetparkhomes.com

113 The Square, Oaktree Park, St Leonards, Ringwood. BH24 2RL



Popular 'Pet Friendly' Residential Park



This drawing has been prepared for diagrammatic purpose only. Not to scale.

2-Bedroom Park Home - approx 44' x 20'

Accommodation & approximate room dimensions:

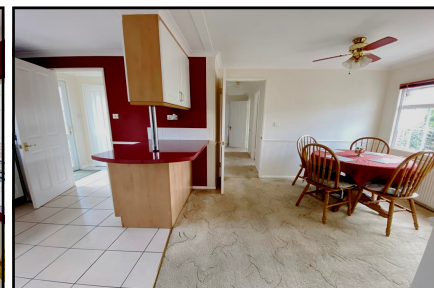
- Entrance Lobby: Cloaks cupboard
- Lounge: approx 19'2" x 10'9" max. Feature fireplace
- Kitchen/Diner: approx 19'2" x 9'9" max. Range of base & wall cupboards. Built-in oven, hob & cooker hood. Space for fridge/freezer. Breakfast bar.
- Utility Room: approx 6'9" x 5'7". Cupboard housing combination gas boiler. Space for washing machine. Door to garden.
- Inner Hall: Linen cupboard.
- Study: approx 6'3" x 5'2". Fitted desk unit.
- Bedroom 1: approx 11'5" x 9'4". Walk-in wardrobe
- En-Suite Shower Room
- Bedroom 2: approx 9'6" x 9'4" max. Fitted wardrobe
- Bathroom: Modern suite comprising panelled bath. Wash basin & WC. Chrome towel rail.
- Gas Central Heating (untested) & Double-Glazing
- Parking on Plot + Private Patio Garden. Metal Shed.
- Age Restriction 50+ Pets Considered
- Residents Members Club on Park
- Popular Park between Ringwood & Ferndown and adjacent to protected forestry land. Useful convenience store in neighbouring holiday park.

Price: £179,950

VIEWING STRICTLY BY APPOINTMENT WITH THE VENDOR'S AGENT Dorset Park Homes 01202 877511

IMPORTANT NOTE: These particulars are believed to be correct but their accuracy is not guaranteed. They do not form part of any contract. Nothing in these particulars shall be deemed to be a statement that the property is in good structural condition or otherwise, nor that any of the services, appliances, equipment or facilities are in good working order or have been tested. Purchasers should satisfy themselves on such matters prior to purchase Ref.W04784

Omar 'Excel' 2004



Pitch Fee: approx £227.86 per month
Subject to Annual Review
Council Tax Band: 'A'

Tenure: 1983 Mobile Homes Act Agreement

The recommended specialist in Park Home sales
Partner: Simon Dixon

