

Head Office:
Dixon Kelley Estate Agents
1 Penn Court
Station Road, West Moors
Dorset. BH22 0JJ

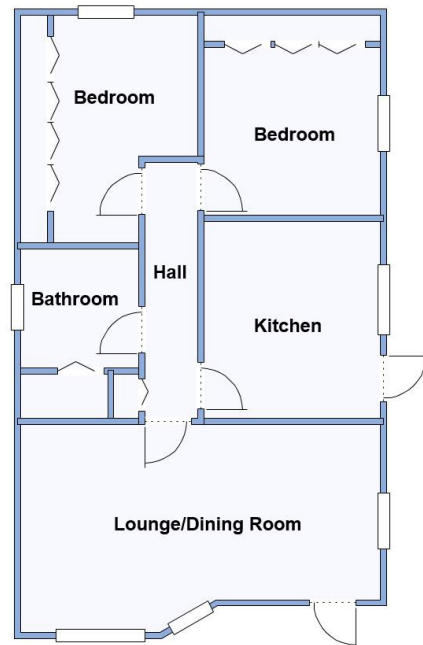
DORSET PARK HOMES

DRAFT

www.dorsetparkhomes.com

Telephone: 01202 877511

17 Doveshill Park, Barnes Road, Ensbury Park, Bournemouth. BH10 5AJ



This drawing has been prepared for diagrammatic purpose only. Not to scale.

2-Bedroom Park Home - approx 32' x 20'

Accommodation & approximate room dimensions:

- Tingdene 'Hayden' Park Home circa 1992
- Kitchen: approx 10'6" x 9'5". Range of floor and wall cupboards. Space for cooker, space for tall fridge/freezer & washing machine. Door to garden.
- Lounge/Dining Room: approx 19'7" x 11'2" max Feature fireplace. Door to front elevation.
- Inner Hall: Cloaks cupboard
- Bedroom 1: approx 12'3" x 9'5". Fitted wardrobes
- Bedroom 2: approx 10'9" x 9'5". Fitted wardrobes
- Bathroom: Panelled bath. Wash Basin and WC. Cupboard housing combination gas boiler.
- Gas Central Heating (system untested)
- PVCu Double-Glazing
- Small Garden with Metal Shed
- Parking on rental basis subject to availability (approx £15 per month)
- Age Restriction 55+
- No Pets
- Well maintained Residential Park close to local amenities & Bournemouth Town Centre.

Close to Amenities



Kitchen



Lounge



Sunny Aspect



Delightful Garden

Price: £130,000

**Pitch Fee: approx £233.83 per month. Water & Sewerage approx £13.28
Subject to Annual Review
Council Tax Band: 'A' Tenure: 1983 Mobile Homes Act Agreement**

VIEWING STRICTLY BY APPOINTMENT WITH THE VENDOR'S AGENT Dorset Park Homes 01202 877511

IMPORTANT NOTE: These particulars are believed to be correct but their accuracy is not guaranteed. They do not form part of any contract. Nothing in these particulars shall be deemed to be a statement that the property is in good structural condition or otherwise, nor that any of the services, appliances, equipment or facilities are in good working order or have been tested. Purchasers should satisfy themselves on such matters prior to purchase Ref.W04807

The recommended specialist in Park Home sales
Partner: Simon Dixon

