

Head Office:
Dixon Kelley Estate Agents
1 Penn Court
Station Road, West Moors
Dorset. BH22 0JJ

DORSET PARK HOMES

DRAFT

www.dorsetparkhomes.com

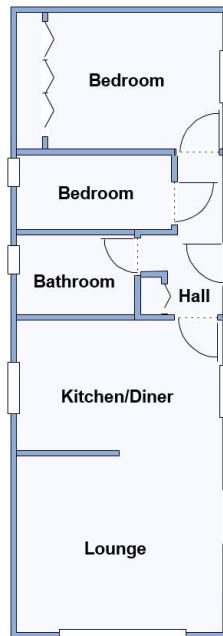
Telephone: 01202 877511

Aldridge Way, Lone Pine Park, Lone Pine Drive, Ferndown. BH22 8NN

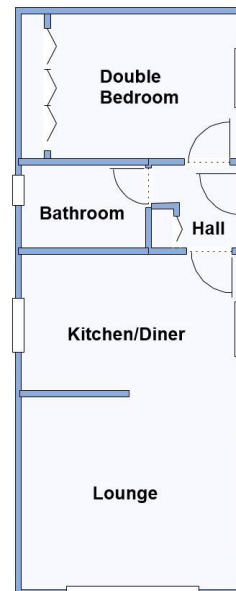


Brochure Photo

**2 Brand New Stately Albion 'Tredegar'
Park Homes**



2-Bedroom 36' x 12'



1-Bedroom 32' x 12'

This drawing has been prepared for diagrammatic purpose only. Not to scale.

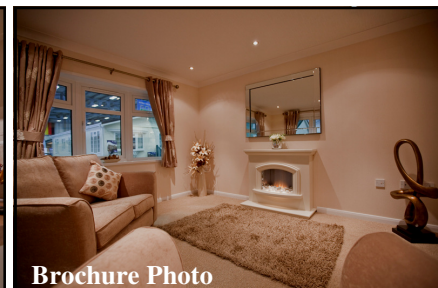
Quality Residential Park in Wonderful Location

High quality new Stately Albion 'Tredegar' Park Homes set on secluded plots in a good position on this prestigious Residential Park which extends to approximately 14 acres adjacent to heathland walks and within easy reach of local amenities. Features include:

- Stylish Interior Design & Fully Furnished
- Kitchen with integrated appliances
- Fitted Wardrobes
- Carpets, Curtains & Light Fittings
- Gas Central Heating (system untested).
- PVCu Double-Glazing
- Parking on Plot
- Age Restriction 55+
- Pets Considered
- Quality Residential Park in exclusive area near to Ferndown Golf Club & access to heathland walks.



Brochure Photo



Brochure Photo



Wonderful Park



Park Adjacent to Heathland

Price: £200,000 36' x 12'

Price: £190,000 32' x 12'

Pitch Fee: approx £255.41 pcm

Subject to Annual Review

Council Tax Band: 'A' Tenure: 1983 Mobile Homes Act Agreement

VIEWING STRICTLY BY APPOINTMENT WITH THE VENDOR'S AGENT Dorset Park Homes 01202 877511

IMPORTANT NOTE: These particulars are believed to be correct but their accuracy is not guaranteed. They do not form part of any contract. Nothing in these particulars shall be deemed to be a statement that the property is in good structural condition or otherwise, nor that any of the services, appliances, equipment or facilities are in good working order or have been tested. Purchasers should satisfy themselves on such matters prior to purchase Ref.W0005

The recommended specialist in Park Home sales
Partner: Simon Dixon

