

**Head Office:**  
Dixon Kelley Estate Agents  
1 Penn Court  
Station Road, West Moors  
Dorset. BH22 0JJ

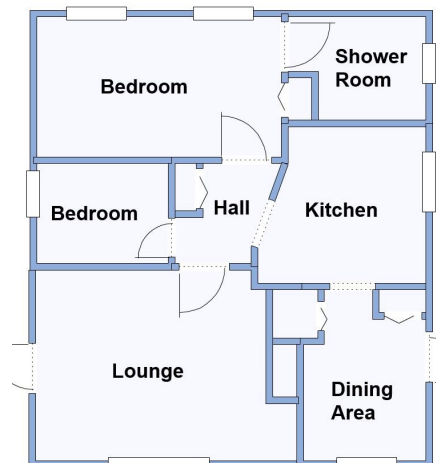
# DORSET PARK HOMES

**DRAFT**

[www.dorsetparkhomes.com](http://www.dorsetparkhomes.com)

**Telephone: 01202 877511**

**108b Moorside, Oaktree Park, St Leonards, Nr Ringwood. BH24 2RN**



This drawing has been prepared for diagrammatic purpose only. Not to scale.

## 2-Bedroom Park Home - approx 22' x 20'

Accommodation & approximate room dimensions:

- Twin Unit Omar Park Home
- Dining Area: approx 8'6" x 6'. Cloaks cupboard. Boiler cupboard housing combination gas boiler.
- Kitchen: approx 8'7" x 7'2". Range of floor and wall cupboards. Cooker point. Space for fridge/freezer & washing machine.
- Inner Hall: Cloaks cupboard
- Lounge: approx 13' x 9'5". Door to garden.
- Bedroom 1: approx 12'3" x 7' plus built-in cupboard.
- En-Suite Shower Room: Wet room style shower with thermostatic shower valve. Wash basin & WC.
- Bedroom 2: approx 6'8" x 5'. Single wardrobe.
- Gas Central Heating (system untested)
- PVCu Double-Glazing
- Paved patio garden with Metal Shed
- Parking for 1 car
- Age Restriction 50+ Pets Considered
- Well maintained Residential Park with active Members Club. Located between Ringwood & Ferndown & adjacent to protected forest walks.

## Popular 'Pet Friendly' Park



**Pitch Fee: approx £229.47 per cal month**

**Subject to Annual Review**

**Council Tax Band: 'A' Tenure: 1983 Mobile Homes Act Agreement**

**Price: £100,000**

**VIEWING STRICTLY BY APPOINTMENT WITH THE VENDOR'S AGENT Dorset Park Homes 01202 877511**

**IMPORTANT NOTE:** These particulars are believed to be correct but their accuracy is not guaranteed. They do not form part of any contract. Nothing in these particulars shall be deemed to be a statement that the property is in good structural condition or otherwise, nor that any of the services, appliances, equipment or facilities are in good working order or have been tested. Purchasers should satisfy themselves on such matters prior to purchase Ref.W04726

*The recommended specialist in Park Home sales*  
Partner: Simon Dixon

