

**Head Office:**  
Dixon Kelley Estate Agents  
1 Penn Court  
Station Road, West Moors  
Dorset. BH22 0JJ

# DORSET PARK HOMES

**DRAFT**

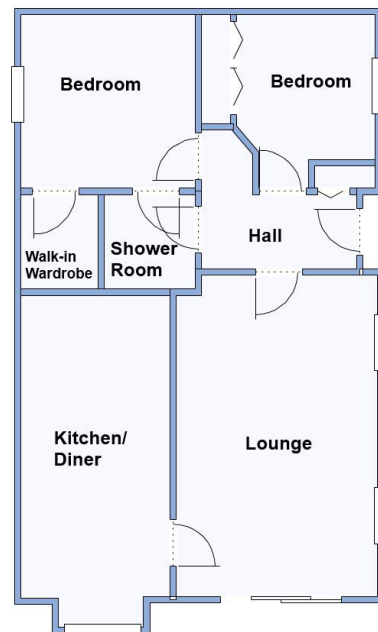
[www.dorsetparkhomes.com](http://www.dorsetparkhomes.com)

**Telephone: 01202 877511**

**5 Laurel Close, Lone Pine Park, Lone Pine Drive, Ferndown. BH22 8FS**



**Brand New Stately Albion Goodwood**



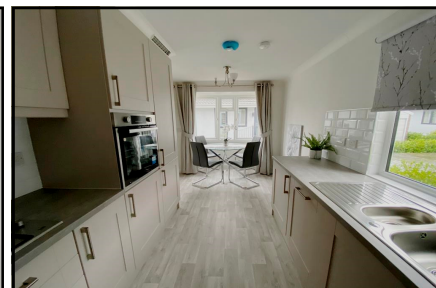
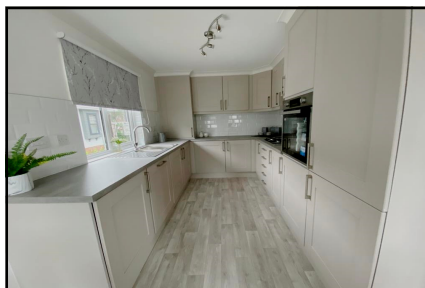
This drawing has been prepared for diagrammatic purpose only. Not to scale.

## 2-Bedroom Park Home - approx 32' x 20'

Accommodation & approximate room dimensions:

- **Entrance Hall:** Cloaks cupboard.
- **Modern Kitchen/Diner:** approx 17'7" x 8'max. Range of floor and wall cupboards. Built in oven & gas hob with extractor above. Integrated dishwasher, washing machine and fridge/freezer. Ample space for dining suite.
- **Lounge:** approx 16'9" x 10'9". Electric fire with mantle above. Patio doors to Raised Sun Terrace.
- **Bedroom 1:** approx 9'4" x 9'4". Walk-in wardrobe
- **En-Suite Shower Room**
- **Bedroom2:** approx 8'3" x 7'4" Plus fitted wardrobes
- **Gas Central Heating** (system untested).
- **PVCu Double-Glazing**
- **Stylish Interior & Fully Furnished**
- **Paved Driveway with Off-Road Parking**
- **Raised Sun Terrace**
- **Age Restriction 55+**
- **Pets Considered**
- **Quality Residential Park in exclusive area near to Ferndown Golf Club & access to heathland walks.**

## Quality Residential Park



**Price: £250,000**

**Pitch Fee: approx £255.41 pcm**

**Subject to Annual Review**

**Council Tax Band: 'A' Tenure: 1983 Mobile Homes Act Agreement**

**VIEWING STRICTLY BY APPOINTMENT WITH THE VENDOR'S AGENT Dorset Park Homes 01202 877511**

**IMPORTANT NOTE:** These particulars are believed to be correct but their accuracy is not guaranteed. They do not form part of any contract. Nothing in these particulars shall be deemed to be a statement that the property is in good structural condition or otherwise, nor that any of the services, appliances, equipment or facilities are in good working order or have been tested. Purchasers should satisfy themselves on such matters prior to purchase Ref.W04687

*The recommended specialist in Park Home sales*  
Partner: Simon Dixon

