



St. Marys Drive, East Preston

Freehold

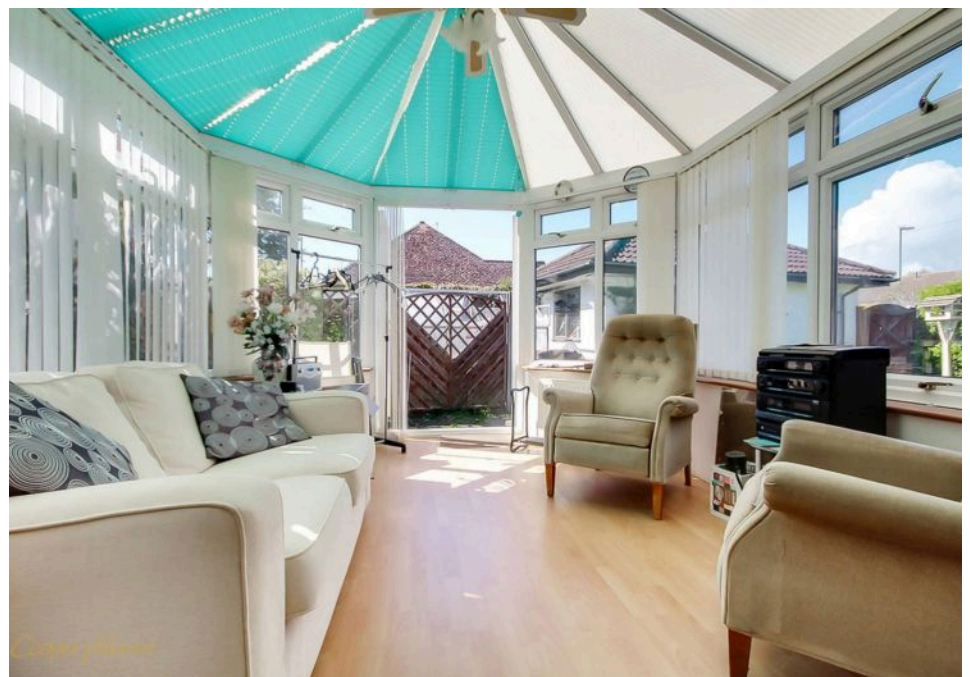
Detached bungalow with no onward chain ready for a swift and hassle-free move • Bright and spacious living areas with dual-aspect lounge, dining room, and conservatory overlooking the garden • Two generous double bedrooms including a principal bedroom with fitted wardrobe area • Two separate shower rooms ideal for guests or shared living flexibility • Detached garage and side access, plus built-in storage and potential to personalise throughout • For more information please visit the Cooper Adams website

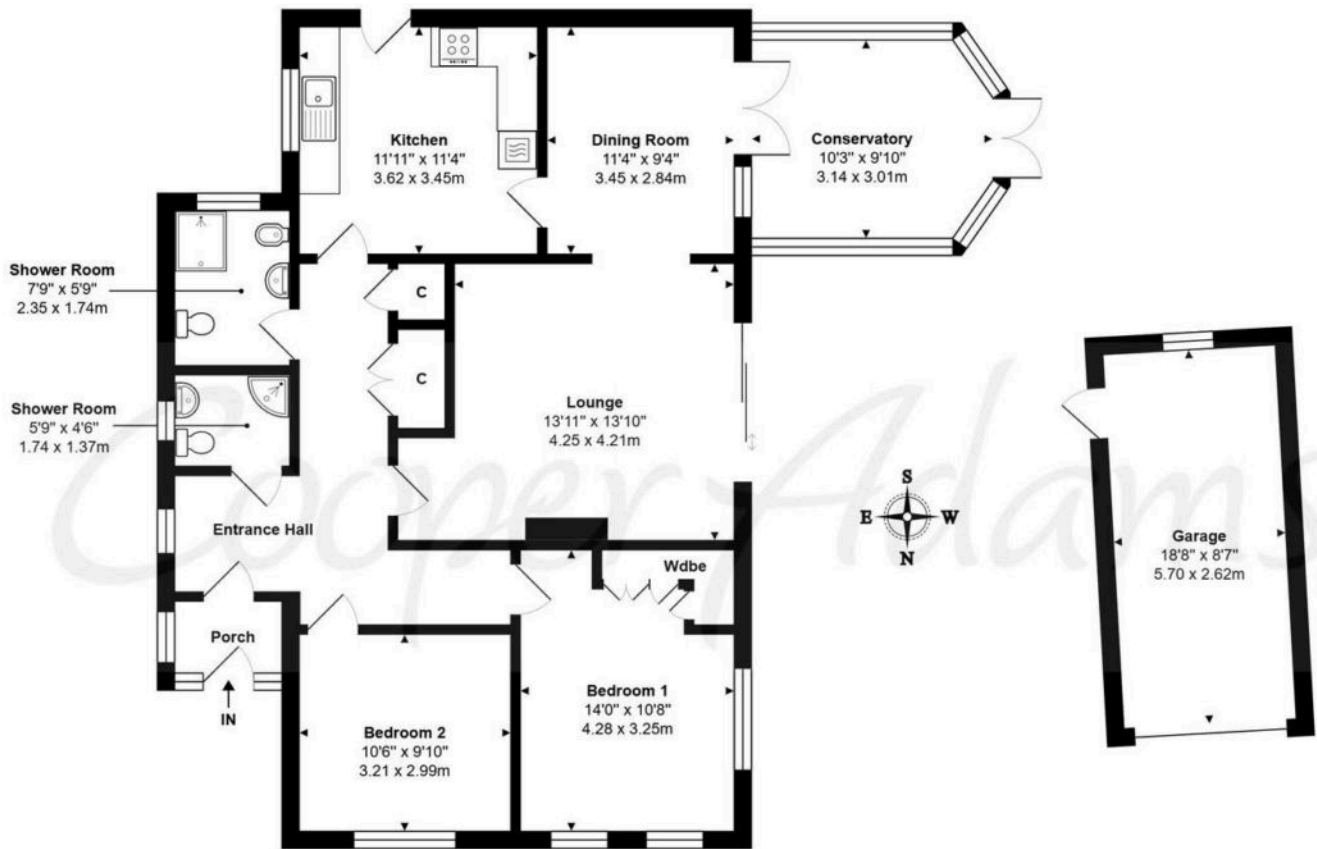
Cooper Adams

Spacious Detached Bungalow in Prime East Preston Location – No Onward Chain. Located on the desirable St Marys Drive, this generously sized two-bedroom detached bungalow offers a fantastic opportunity for a smooth and stress-free move. The home opens with a welcoming porch and entrance hall, leading into a bright, dual-aspect lounge that flows into the dining room and conservatory—perfect for entertaining or relaxing while enjoying views of the garden. The separate kitchen is well-equipped and conveniently placed next to the dining area. Both double bedrooms are well-proportioned, with the main bedroom featuring a fitted wardrobe space. Two shower rooms offer added flexibility for guests or family. Outside, the property benefits from side access, built-in storage, and a detached garage ideal for parking or as a workshop. Located close to village amenities, transport links, and the seafront, this is a rare chance to secure a spacious bungalow in a sought-after coastal location.



East Preston, a charming seaside village in West Sussex, offers a strong sense of community with shops, restaurants, schools, and leisure clubs nearby. Its peaceful pebble shoreline is perfect for relaxing walks. Ideally located near the South Downs, it combines the best of country and seaside living.





St Marys Drive, East Preston, BN16 1JB

Total Approx. Floor Area 1300 ft² ... 120.7 m²

Whilst every attempt has been made to ensure the accuracy of the floor plan contained here, measurements are approximate and no responsibility is taken for any error, omission or mis-statement.
This plan is for illustrative purposes only and should be used as such by any prospective purchaser.
Prepared by Jlm 2025



This material is protected by laws of copyright which is owned by Cooper Adams. Whilst every attempt has been made to ensure the accuracy of these details and floor plan contained here, they do not constitute any offer or contract or part thereof. All measurements are always maximum measurements into bay windows, alcoves and for L shaped rooms. No guarantee is given on total square footage taken from the floor plan. The details, pictures, maps and floor plans are for illustration purposes only and not to scale. Any appliances and/or services have not been tested. Cooper Adams is a trading name of Cooper Adams Estates Limited registered at Bishopstone. Registered in England and Wales. Our registered number is 07127482. Our VAT Number is 962847172.

Lettings | Sales | Free valuations | Land & New Homes | Mortgages

FULL DETAILS OF THE MATERIAL INFORMATION ARE ON OUR WEBSITE - VIEWING STRICTLY BY APPOINTMENT WITH COOPER ADAMS

FOR MORE PHOTOS AND TO BOOK A VIEWING VISIT OUR WEBSITE - Tel: 01903 791 792 - www.cooper-adams.com