



Seventeen, Manor Road

Share of Freehold

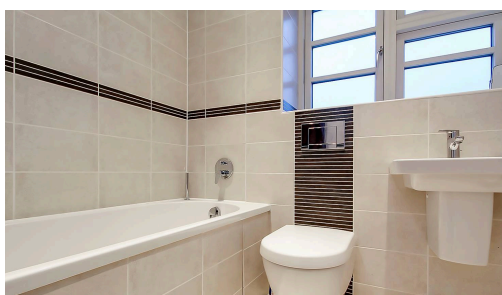
Listed 1930's Art Deco Conversion • Two bedroom contemporary townhouse • Share of Freehold • No forward chain • Gated garage with allocated parking, electric car charger and storage • For more information please go to Cooper Adams' website

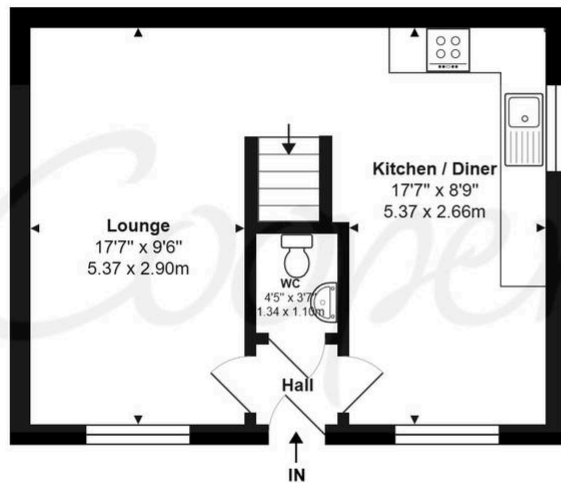
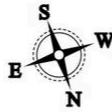
Cooper Adams

Behind its Grade II listed façade, complete with four original Shell pumps, lies a striking fusion of Art Deco heritage and modern design, meticulously rebuilt in 2012. Once a working garage, this unique home is brimming with character, featuring a stunning central staircase that anchors the living space. The open-plan kitchen and lounge offer a seamless flow, while upstairs, two well-appointed bedrooms each boast built-in wardrobes and en-suite bathrooms. A private front patio spans the width of the property, overlooking beautifully maintained communal gardens. Offering a contemporary townhouse feel within a select development just minutes from the beach, this chain-free home is an ideal weekend retreat or full-time residence.

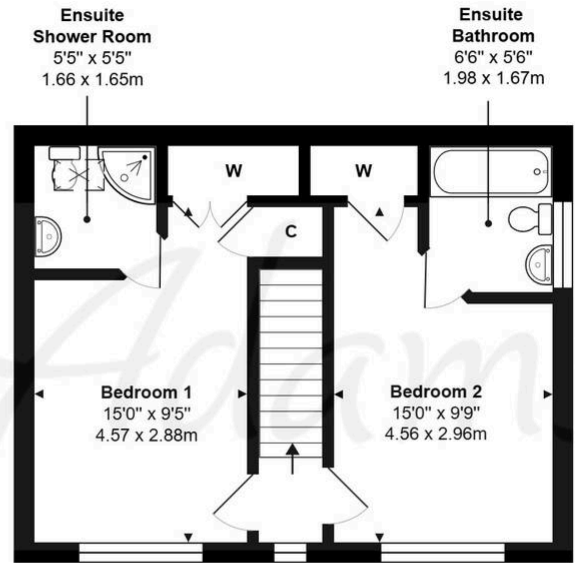


East Preston, a charming seaside village in West Sussex, offers a strong sense of community with shops, restaurants, schools, and leisure clubs nearby. Its peaceful pebble shoreline is perfect for relaxing walks. Ideally located near the South Downs, it combines the best of country and seaside living.





Ground Floor



First Floor

Manor Road, East Preston, BN16 1FG

Total Area: 809 ft² ... 75.2 m²

Whilst every attempt has been made to ensure the accuracy of the floor plan contained here, measurements are approximate and no responsibility is taken for error, omission or mis-statement.
This plan is for illustrative purposes only and should be used as such by any prospective purchaser.
Created by Jtm 2024

