



Selborne Way, East Preston

Freehold

A five-bedroom detached house • Private Willowhayne marine estate • Outdoor pool and pool house • Luxury cabin in the garden • Ample parking on private driveway & double garage • For more information, go to Cooper Adams' website • 5 minute walking distance to East Preston beach

Cooper Adams

A stylish and luxurious residence located in stunning secluded grounds on one of the most prestigious private marine estates in Sussex. The property offers contemporary accommodation with five bedrooms, four bathrooms, drawing room, family room, feature kitchen-dining room, utility and a double garage with separate gym. The beautiful east facing garden features a swimming pool, pool house and luxury heated cabin complete with wood burner.

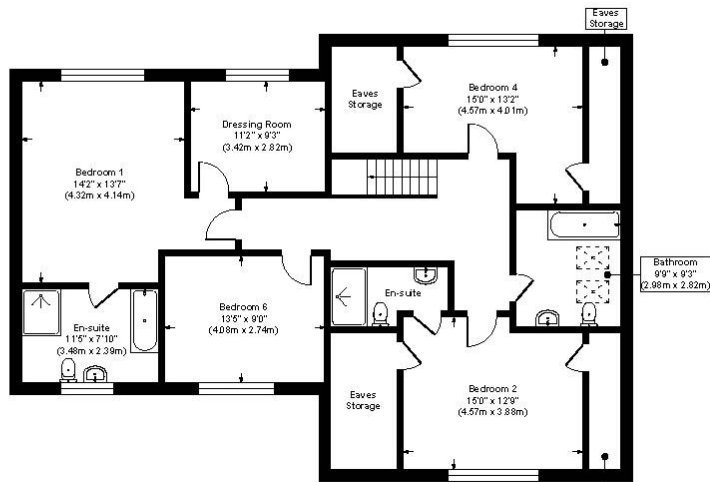
This property is "Legally Prepared." Cooper Adams has gathered key documents, including the title, plans, property forms, warranties, and EPC. Buyers must request these before offering.

The seller requires a 'Reservation Agreement' to protect serious buyers as they proceed to exchange of contracts.

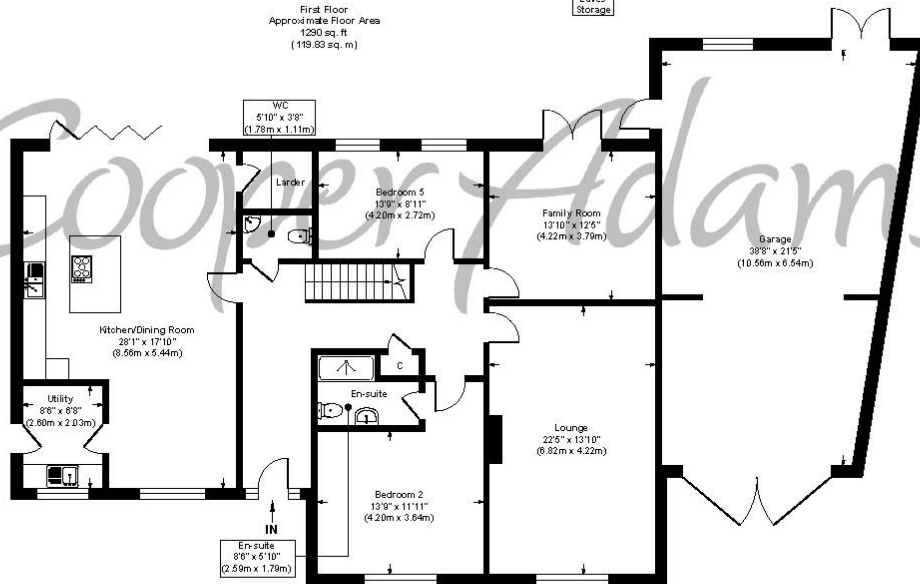


The sought-after Willowhayne marine estate in East Preston, established in the 1930s, provides privacy and security with gated access on summer weekends. A railway station is just over 1/2 mile away, connecting to Brighton, Gatwick, and London. Many amenities are close to hand with the sea, the downs, golf courses and many shops, bars and restaurants.





First Floor
Approximate Floor Area
1290 sq. ft
(119.83 sq. m)



Ground Floor
Approximate Floor Area
2347 sq. ft
(218.03 sq. m)

Selborne Way East Preston BN16 2TG
Approx. Gross Internal Floor Area 3637 sq. ft / 337.86 sq. m

Illustration for identification purposes only, measurements are approximate, not to scale

Copyright © Cooper Adams

Council Tax band: G / Tenure: Freehold / EPC Energy Efficiency Rating: C / EPC Environmental Impact Rating: D

This material is protected by laws of copyright which is owned by Cooper Adams. Whilst every attempt has been made to ensure the accuracy of these details and floor plan contained here, they do not constitute any offer or contract or part thereof. All measurements are always maximum measurements into bay windows, alcoves and for L shaped rooms. No guarantee is given on total square footage taken from the floor plan. The details, pictures, maps and floor plans are for illustration purposes only and not to scale. Any appliances and/or services have not been tested. Cooper Adams is a trading name of Cooper Adams Estates Limited registered at Bishopstons. Registered in England and Wales. Our registered number is 07127482. Our VAT Number is 982847172.

Lettings | Sales | Free valuations | Land & New Homes | Mortgages

VIEWING STRICTLY BY APPOINTMENT

FOR MORE PHOTOS AND TO BOOK A VIEWING VISIT OUR WEBSITE Tel: 01903 791 792 www.cooper-adams.com