



Harewood Avenue, Marylebone

1 Bed Flat

£1,450 pcm + security
deposit





- Flat
- 1 Reception
- Energy Rating : C
- Furnished
- Separate WC
- Washing Machine
- 1 Bed
- 1 Bathroom
- Council Tax Band D
- Shower
- Garden
- Dish Washer

Amazing one bedroom flat with patio garden in the heart of Marylebone, central London, minutes from Marylebone station, BNP Paribas bank's corporate services offices and a plethora of local shopping, and leisure amenities.



Certificate Number : 8870-6327-7950-0487-1292

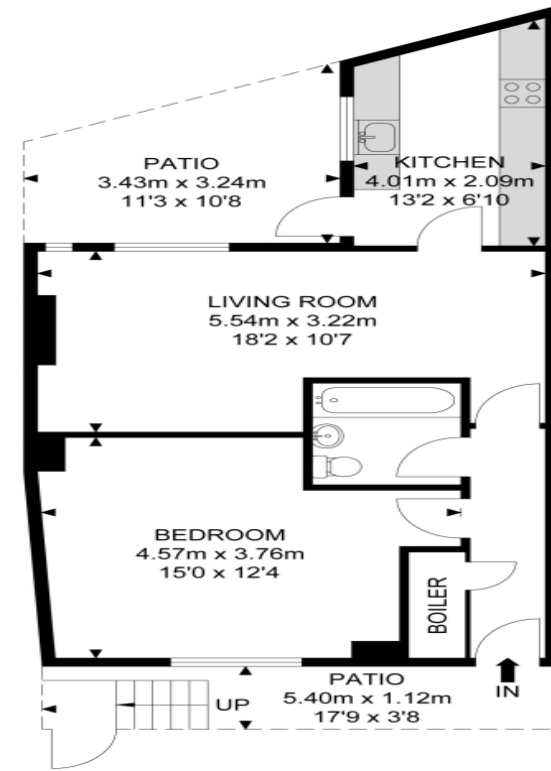
Score	Energy rating	Current	Potential
92+	A		
81-91	B		
69-80	C	77	80
55-68	D		
39-54	E		
21-38	F		
1-20	G		

<https://find-energy-certificate.digital.communities.gov.uk/energy-certificate/8870-6327-7950-0487-1292>



528-530 Hornsey Road, Archway
 London, N19 3QN
telephone : 020 7272 9988
 email : info@aristonproperty.co.uk
aristonproperty.co.uk

Harewood Avenue



Lower Ground Floor



APPROX. GROSS INTERNAL FLOOR AREA 512.36 SQ FT / 47.60 SQM
 APPROX. GROSS EXTERNAL FLOOR AREA 163.61 SQ FT / 15.20 SQM

Whilst every attempt has been made to ensure the accuracy of the floor plan contained here, measurements of doors, windows, rooms and any other items are approximated and no responsibility is taken for any error, omission or mis-statement. This plan is for illustrative purposes only and should be used as such by any prospective purchaser. The service, system and appliances shown have not been tested and no guarantee as to their operability or efficiency can be given.

© SpacePhoto

Photography and Floor Plan

THE PROPERTY MISDESCRIPTIONS ACT 1991: Any areas, measurements or distances are approximate. Land measurements are provided by the vendor and buyers are advised to obtain verification from their solicitor. The text, photographs and plans are for guidance only and are not necessarily comprehensive. Items shown in the property photographs are not included unless specifically mentioned within the sales particulars although they may be available by separate negotiation. Ariston Property cannot verify that the fixtures and fittings, equipment or services are in working order or fit for the purpose and buyers are advised to obtain verification from their solicitor. The tenure of a property is based upon information supplied by the seller and buyers are advised to obtain verification from their solicitor.