



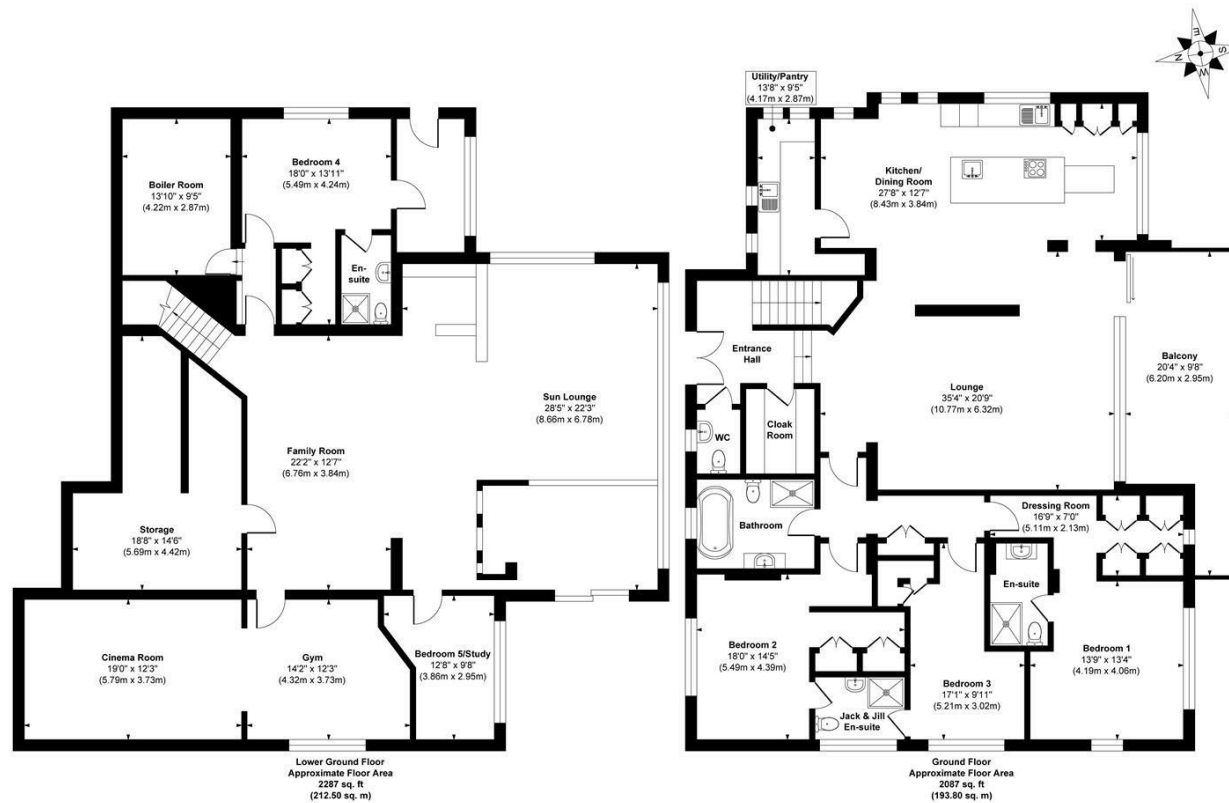
52 LARKFIELD ROAD
RAWDON, LS19 6DZ

£1,395,000
FREEHOLD

Skye House is a breathtaking five-bedroom residence offering luxury, privacy, and unforgettable views. With spacious open-plan living, a showstopping kitchen, and a lower ground floor built for entertaining, this home blends elegance with functionality. Enjoy high-end features throughout, from a vaulted primary suite to a private cinema, gym, and beautifully landscaped south-facing garden, all behind secure electric gates.

M O N R O E

SELLERS OF THE FINEST HOMES



Approx. Gross Internal Floor Area 4374 sq. ft / 406.30 sq. m

Illustration for identification purposes only. measurements are approximate. not to scale.

Copyright © Show Home.



Energy Efficiency Rating		
	Current	Potential
Very energy efficient - lower running costs		
(92 plus) A		
(81-91) B		
(69-80) C		
(55-68) D		
(39-54) E		
(21-38) F		
(1-20) G		
Not energy efficient - higher running costs		
England & Wales	EU Directive 2002/91/EC	

Agents Note: Whilst every care has been taken to prepare these particulars, they are for guidance purposes only. All measurements are approximate and are for general guidance purposes only and whilst every care has been taken to ensure their accuracy, they should not be relied upon and potential buyers/tenants are advised to recheck the measurements

Alwoodley Sales
716 King Lane Alwoodley
Leeds
West Yorkshire
LS17 7BA

0113 870 4443
hello@monroeestateagents.com
www.monroeestateagents.com

MONROE

SELLERS OF THE FINEST HOMES