



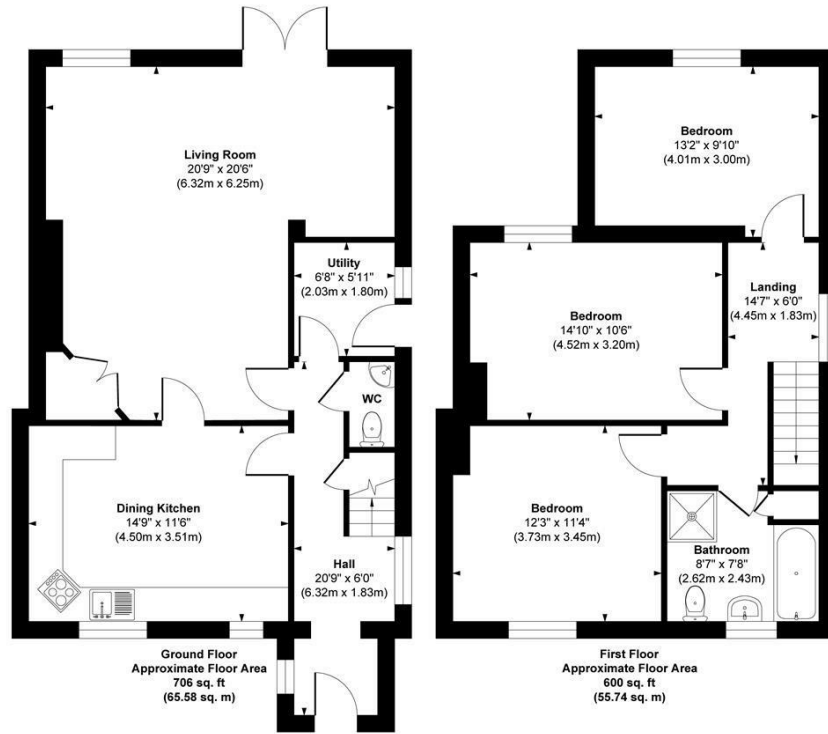
105 GATELAND LANE
LEEDS, LS17 8LW

£495,000
FREEHOLD

Welcome to 105 Gateland Lane, a charming and characterful three-bedroom cottage nestled in the picturesque village of Shadwell.

MONROE

SELLERS OF THE FINEST HOMES



Energy Efficiency Rating		Current	Potential
Very energy efficient - lower running costs			
(92 plus) A			
(81-91) B			
(69-80) C			
(55-68) D		66	76
(39-54) E			
(21-38) F			
(1-20) G			
Not energy efficient - higher running costs			
England & Wales		EU Directive 2002/91/EC	

Approx. Gross Internal Floor Area 1306 sq. ft / 121.32 sq. m

Illustration for identification purposes only, measurements are approximate, not to scale.
Copyright © Zenith Creations.

Agents Note: Whilst every care has been taken to prepare these particulars, they are for guidance purposes only. All measurements are approximate and are for general guidance purposes only and whilst every care has been taken to ensure their accuracy, they should not be relied upon and potential buyers/tenants are advised to recheck the measurements

Alwoodley Sales
1-3 The Avenue
Alwoodley
Leeds
West Yorkshire
LS17 7BD

0113 870 4443
hello@monroestateagents.com
www.monroestateagents.com

MONROE

SELLERS OF THE FINEST HOMES