



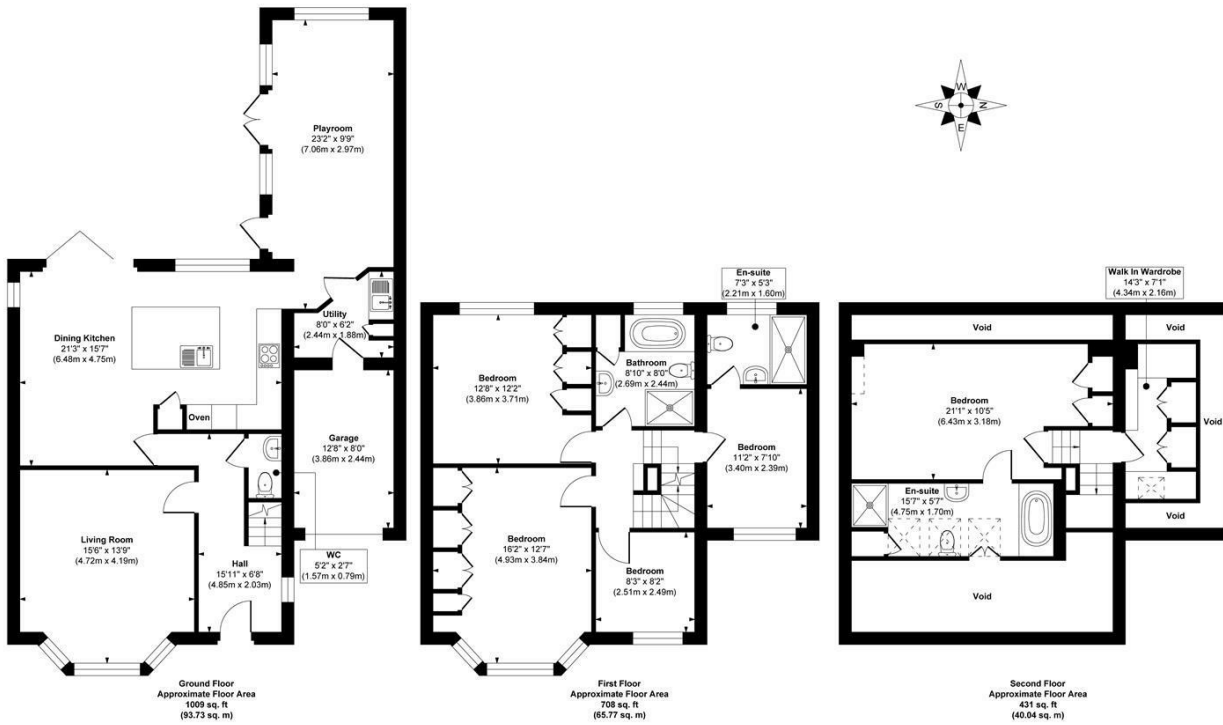
**27 THE AVENUE**  
LEEDS, LS8 1JG

**£950,000**  
FREEHOLD

**\*\*PRIME LOCATION\*\*** This home is walking distance to Roundhay Park and the very BEST local amenities North Leeds has to offer!

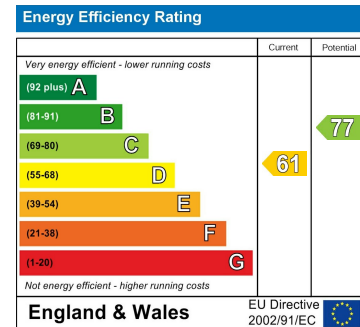
**MONROE**

SELLERS OF THE FINEST HOMES



**Approx. Gross Internal Floor Area Including Garage 2148 sq. ft / 199.54 sq. m**  
 Illustration for identification purposes only, measurements are approximate, not to scale.

Copyright © Zenith Creations.



Agents Note: Whilst every care has been taken to prepare these particulars, they are for guidance purposes only. All measurements are approximate and are for general guidance purposes only and whilst every care has been taken to ensure their accuracy, they should not be relied upon and potential buyers/tenants are advised to recheck the measurements

Alwoodley Sales  
 1-3 The Avenue  
 Alwoodley  
 Leeds  
 West Yorkshire  
 LS17 7BD

0113 870 4443  
 hello@monroestateagents.com  
 www.monroestateagents.com

MONROE

SELLERS OF THE FINEST HOMES