



19 HAREWOOD MEWS

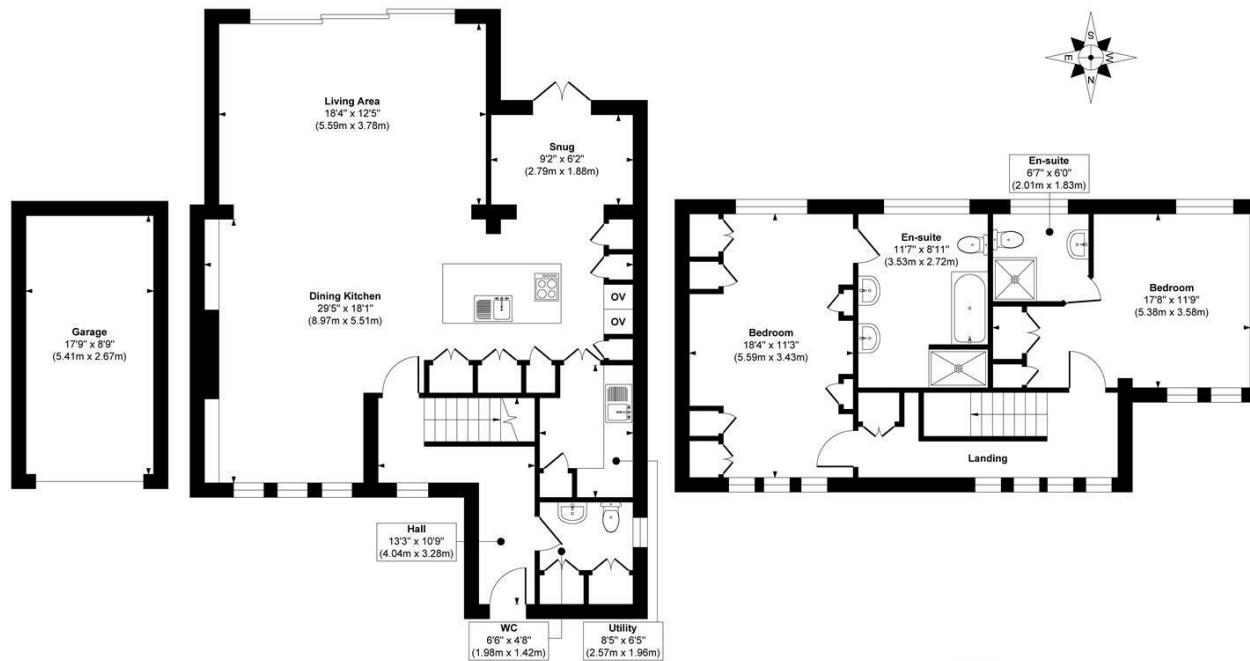
LEEDS, LS17 9LY

£650,000
LEASEHOLD

Occupying a prime position within one of Yorkshires most prestigious villages, 19 Harewood mews has been extensively renovated and modernised to the highest standard.

MONROE

SELLERS OF THE FINEST HOMES



Garage
Approximate Floor Area
155 sq. ft
(14.39 sq. m)

Ground Floor
Approximate Floor Area
938 sq. ft
(87.14 sq. m)

First Floor
Approximate Floor Area
640 sq. ft
(59.45 sq. m)

Approx. Gross Internal Floor Area 1733 sq. ft / 160.98 sq. m (Including Garage)

Illustration for identification purposes only, measurements are approximate, not to scale.
Copyright © Zenith Creations.



Energy Efficiency Rating		Current	Potential
Very energy efficient - lower running costs			
(92 plus) A			
(81-91) B			82
(69-80) C		67	
(55-68) D			
(39-54) E			
(21-38) F			
(1-20) G			
Not energy efficient - higher running costs			
England & Wales		EU Directive 2002/91/EC	

Agents Note: Whilst every care has been taken to prepare these particulars, they are for guidance purposes only. All measurements are approximate and are for general guidance purposes only and whilst every care has been taken to ensure their accuracy, they should not be relied upon and potential buyers/tenants are advised to recheck the measurements

Alwoodley Sales
1-3 The Avenue
Alwoodley
Leeds
West Yorkshire
LS17 7BD

0113 870 4443
hello@monroestateagents.com
www.monroestateagents.com

MONROE

SELLERS OF THE FINEST HOMES