



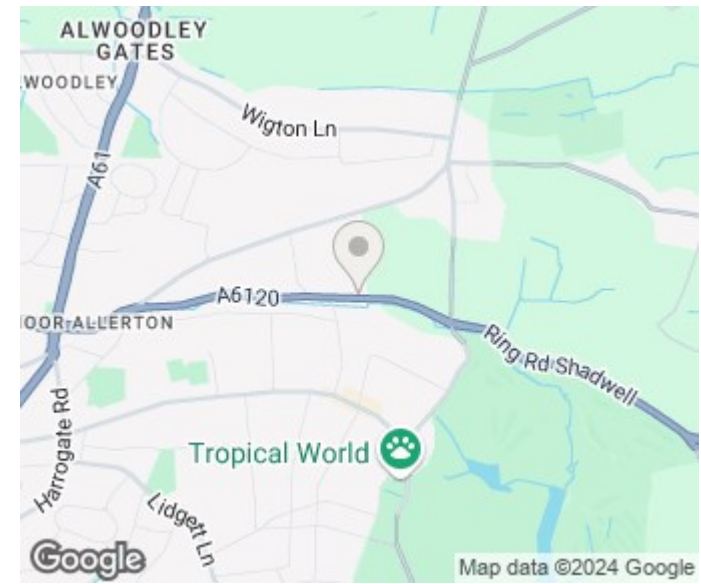
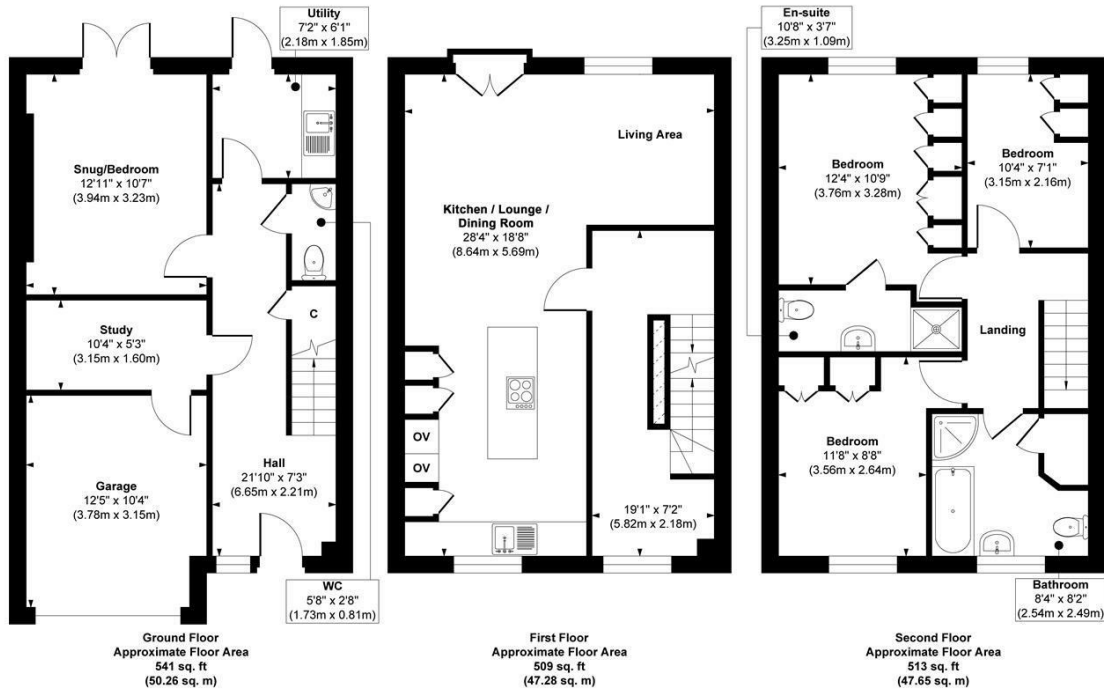
3 ACREWOOD CLOSE
LEEDS, LS17 8GJ

£425,000
FREEHOLD

Monroe is proud to present this stunning 3 bedroom townhouse with south facing garden and integral garage. Situated in the sought after location of North Leeds, this property isn't one to be missed.

MONROE

SELLERS OF THE FINEST HOMES



| Energy Efficiency Rating | | Current | Potential |
|---|--|-------------------------|-----------|
| Very energy efficient - lower running costs | | | |
| (92 plus) A | | | |
| (81-91) B | | | |
| (69-80) C | | 73 | 84 |
| (55-68) D | | | |
| (39-54) E | | | |
| (21-38) F | | | |
| (1-20) G | | | |
| Not energy efficient - higher running costs | | | |
| England & Wales | | EU Directive 2002/91/EC | |

Approx. Gross Internal Floor Area 1563 sq. ft / 145.19 sq. m

Illustration for identification purposes only, measurements are approximate, not to scale.

Copyright © Zenith Creations.

Agents Note: Whilst every care has been taken to prepare these particulars, they are for guidance purposes only. All measurements are approximate and are for general guidance purposes only and whilst every care has been taken to ensure their accuracy, they should not be relied upon and potential buyers/tenants are advised to recheck the measurements

Alwoodley Sales
1-3 The Avenue
Alwoodley
Leeds
West Yorkshire
LS17 7BD

0113 870 4443
hello@monroestateagents.com
www.monroestateagents.com

MONROE

SELLERS OF THE FINEST HOMES