



21 CRESKELD DRIVE
LEEDS, LS16 9EJ

£1,100,000
FREEHOLD

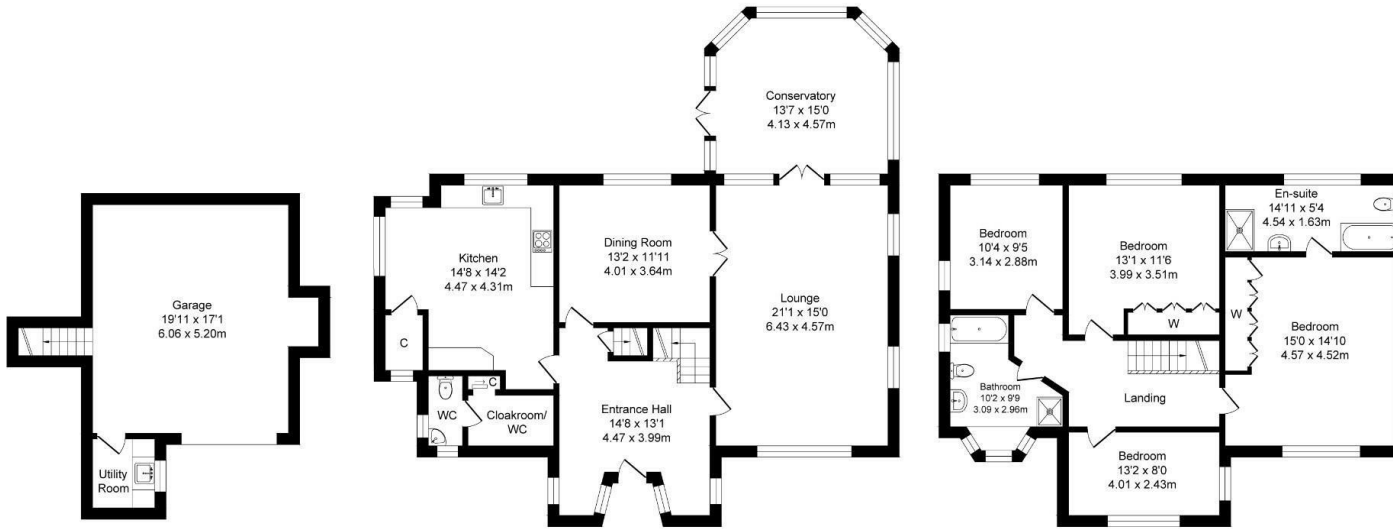
Behold this exquisite family home in Bramhope, offered by MONROE. Spanning 2582 Sqft, it boasts breathtaking, private gardens.

MONROE

SELLERS OF THE FINEST HOMES

Creskeld Lane, Bramhope
 Total Approx. Floor Area 2582 Sq.ft. (239.9 Sq.M.)

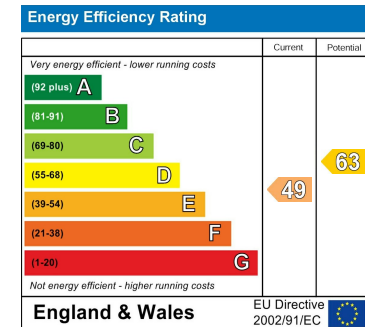
Surveyed and drawn by Lens Media for illustrative purposes only. Not to scale. Whilst every attempt was made to ensure the accuracy of the floor plan, all measurements are approximate and no responsibility is taken for any error.



Lower Ground Floor
 Approx. Floor Area 402 Sq.Ft (37.4 Sq.M.)

Ground Floor
 Approx. Floor Area 1225 Sq.Ft (113.8 Sq.M.)

First Floor
 Approx. Floor Area 955 Sq.Ft (88.7 Sq.M.)



Agents Note: Whilst every care has been taken to prepare these particulars, they are for guidance purposes only. All measurements are approximate and are for general guidance purposes only and whilst every care has been taken to ensure their accuracy, they should not be relied upon and potential buyers/tenants are advised to recheck the measurements

Alwoodley Office Sales
 1-3 The Avenue
 Alwoodley
 Leeds
 West Yorkshire
 LS17 7BD

0113 870 4443
 hello@monroestateagents.com
 www.monroestateagents.com

MONROE

SELLERS OF THE FINEST HOMES