



6 BRADLEY TERRACE

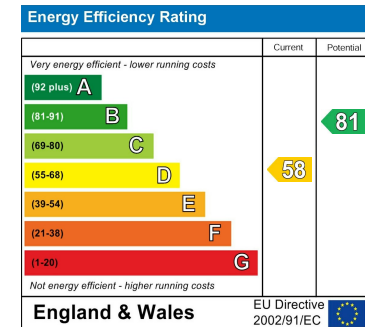
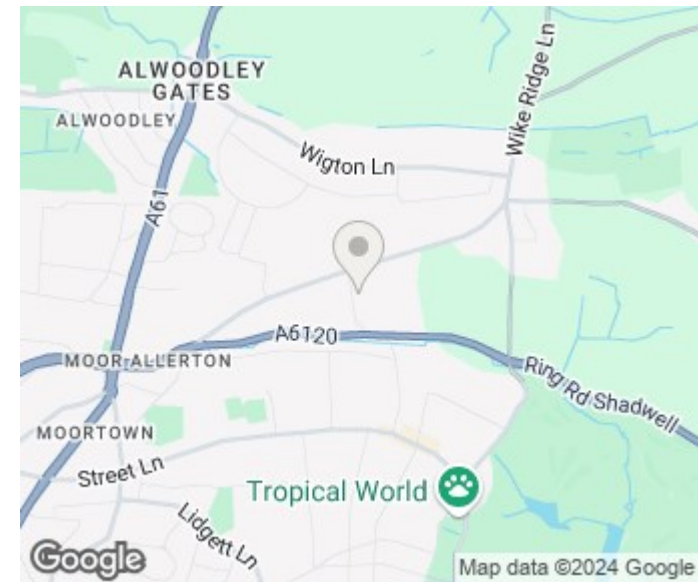
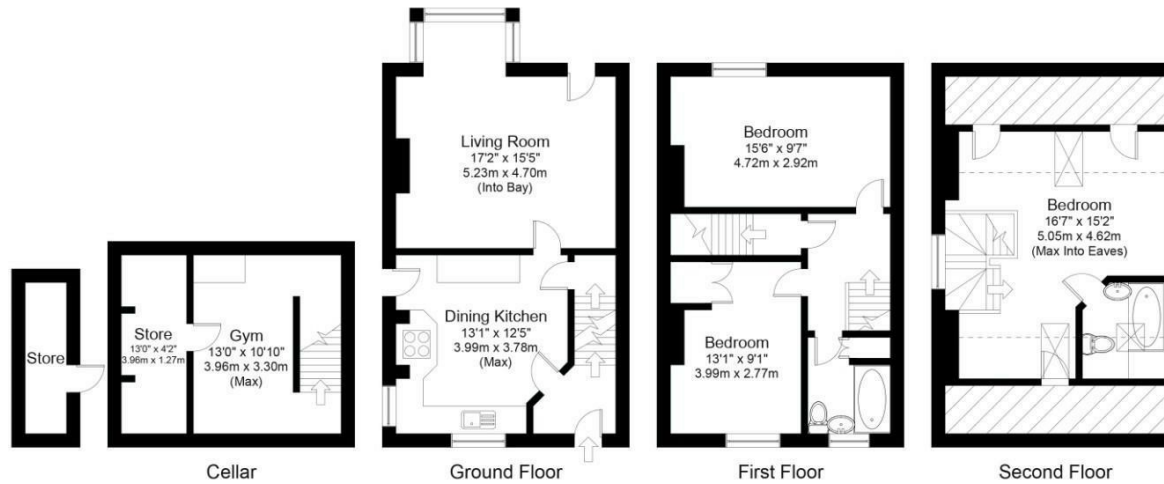
LEEDS, LS17 8NX

£380,000
FREEHOLD

Looking for a charming Cottage? Look no further! This 3-bedroom house boasts character and a large SOUTH-FACING garden.

MONROE

SELLERS OF THE FINEST HOMES



Main House Gross internal floor area including eaves (approx.): 125.6 sq m (1,352 sq ft)
 External Store Gross internal floor area (approx.): 3.1 sq m (33 sq ft)
 Combined Gross internal floor area (approx.): 128.7 sq m (1,385 sq ft)
 For illustrative purposes only. Not to Scale. Copyright © Zenith Creations.

Agents Note: Whilst every care has been taken to prepare these particulars, they are for guidance purposes only. All measurements are approximate and are for general guidance purposes only and whilst every care has been taken to ensure their accuracy, they should not be relied upon and potential buyers/tenants are advised to recheck the measurements

Alwoodley Sales
 1-3 The Avenue
 Alwoodley
 Leeds
 West Yorkshire
 LS17 7BD

0113 870 4443
 hello@monroestateagents.com
 www.monroestateagents.com

MONROE

SELLERS OF THE FINEST HOMES