



14 STANHOPE DRIVE

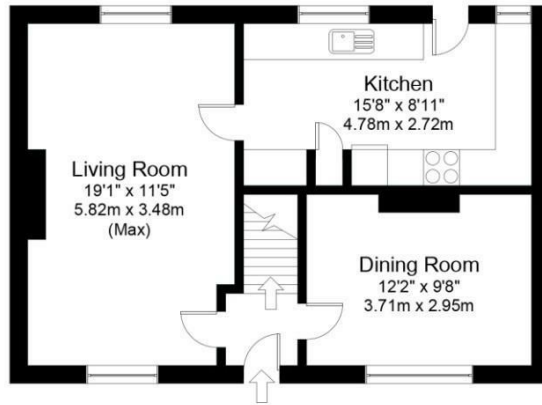
LEEDS, LS18 4ES

£350,000
FREEHOLD

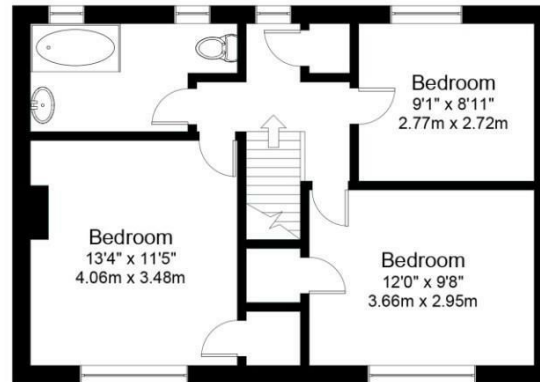
Monroe is proud to present this fantastic opportunity for a fully renovated and chain-free property situated on a highly sought-after road in the desirable Horsforth area on 'The Avenue of Trees'. This stunning property boasts three double bedrooms, providing ample space for you and your family. Don't miss out on the chance to make this beautiful property your own.

MONROE

SELLERS OF THE FINEST HOMES



Ground Floor



First Floor

Gross internal floor area (approx.): 98.8 sq m (1,064 sq ft)
For illustrative purposes only. Not to Scale. Copyright © Zenith Creations.



Energy Efficiency Rating		Current	Potential
Very energy efficient - lower running costs			
(92 plus) A			86
(81-91) B		72	
(69-80) C			
(55-68) D			
(39-54) E			
(21-38) F			
(1-20) G			
Not energy efficient - higher running costs			
England & Wales		EU Directive 2002/91/EC	

Agents Note: Whilst every care has been taken to prepare these particulars, they are for guidance purposes only. All measurements are approximate and are for general guidance purposes only and whilst every care has been taken to ensure their accuracy, they should not be relied upon and potential buyers/tenants are advised to recheck the measurements

Alwoodley Office Sales
1-3 The Avenue
Alwoodley
Leeds
West Yorkshire
LS17 7BD

0113 870 4443
hello@monroestateagents.com
www.monroestateagents.com

MONROE

SELLERS OF THE FINEST HOMES