



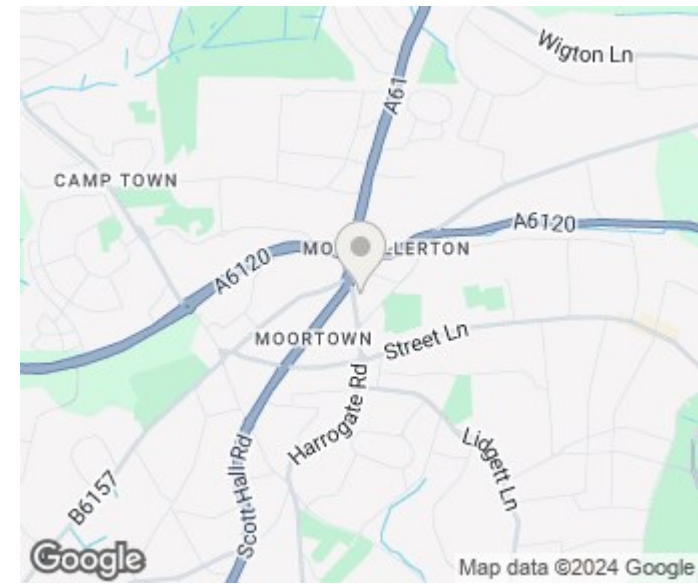
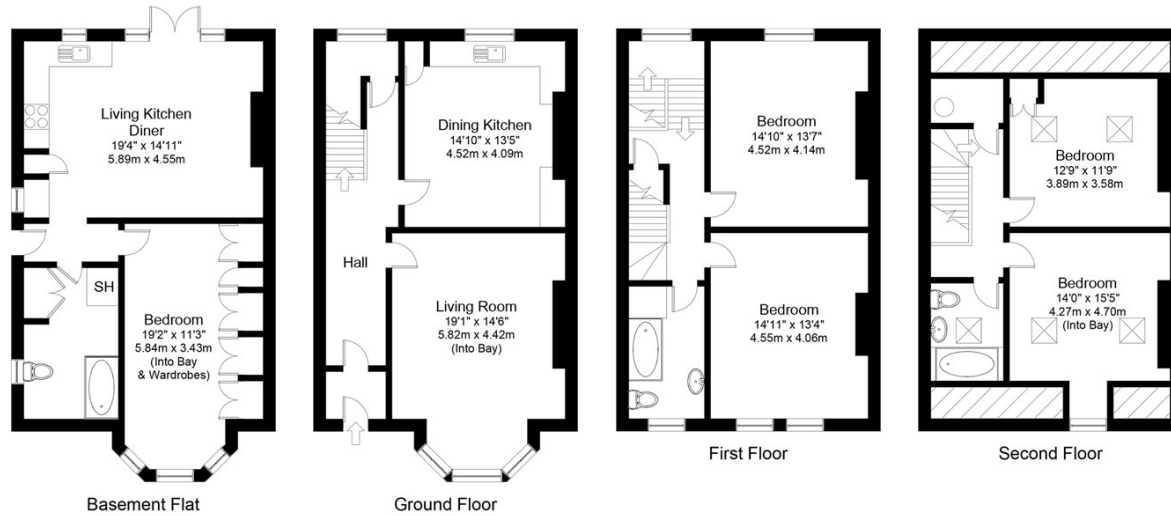
472 HARROGATE ROAD
LEEDS, LS17 6DN

£550,000
FREEHOLD

Calling FAMILIES or INVESTORS...This Victorian home with annex accommodation is ideally situated near Moortown's most sought-after amenities. Don't miss this fantastic opportunity!

MONROE

SELLERS OF THE FINEST HOMES



Energy Efficiency Rating		Current	Potential
Very energy efficient - lower running costs			
(92 plus) A			
(81-91) B			82
(69-80) C			
(55-68) D		47	
(39-54) E			
(21-38) F			
(1-20) G			
Not energy efficient - higher running costs			
England & Wales		EU Directive 2002/91/EC	

Gross internal floor area including eaves and garage (approx.): 207.3 sq m (2,231 sq ft)
 For illustrative purposes only. Not to Scale. Copyright © Zenith Creations.

Agents Note: Whilst every care has been taken to prepare these particulars, they are for guidance purposes only. All measurements are approximate and are for general guidance purposes only and whilst every care has been taken to ensure their accuracy, they should not be relied upon and potential buyers/tenants are advised to recheck the measurements

Alwoodley Sales
 1-3 The Avenue
 Alwoodley
 Leeds
 West Yorkshire
 LS17 7BD

0113 870 4443
 hello@monroestateagents.com
 www.monroestateagents.com

MONROE

SELLERS OF THE FINEST HOMES