



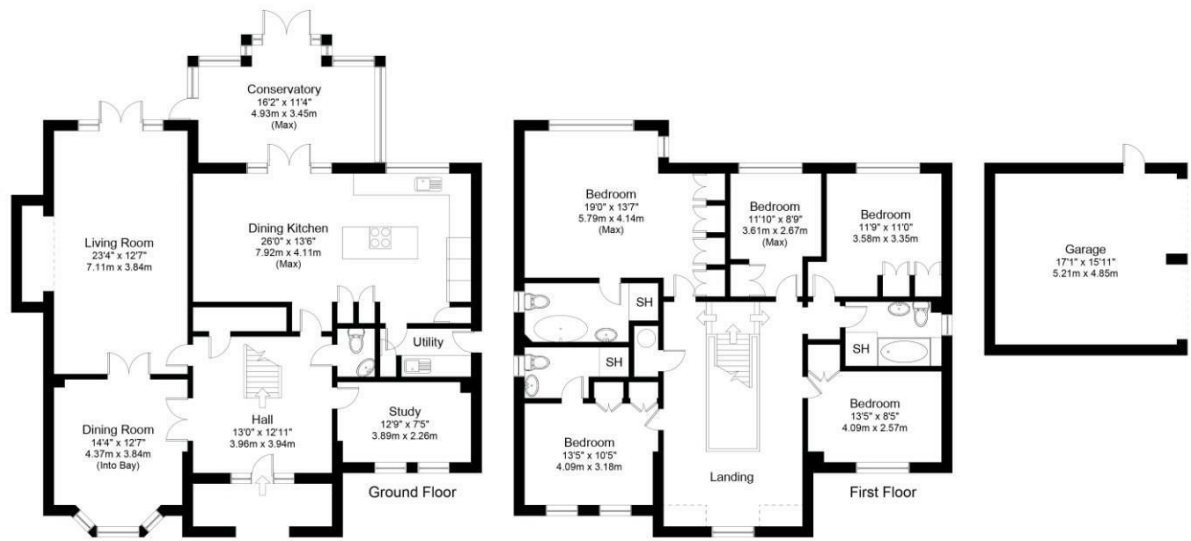
6 STONELEIGH CLOSE
LEEDS, LS17 8FH

£875,000
FREEHOLD

If you are searching for an expansive five-bedroom family home with an exceptional location in Shadwell, look no further.

MONROE

SELLERS OF THE FINEST HOMES



Main House Gross internal floor area including eaves (approx.): 243.9 sq m (2,625 sq ft)
 Garage Gross internal floor area (approx.): 25.3 sq m (272 sq ft)
 Combined Gross internal floor area (approx.): 269.1 sq m (2,897 sq ft)
 For illustrative purposes only. Not to Scale. Copyright © Zenith Creations.

Energy Efficiency Rating		Current	Potential
Very energy efficient - lower running costs			
(92 plus) A			
(81-91) B			
(69-80) C		76	85
(55-68) D			
(39-54) E			
(21-38) F			
(1-20) G			
Not energy efficient - higher running costs			
England & Wales		EU Directive 2002/91/EC	

Agents Note: Whilst every care has been taken to prepare these particulars, they are for guidance purposes only. All measurements are approximate and are for general guidance purposes only and whilst every care has been taken to ensure their accuracy, they should not be relied upon and potential buyers/tenants are advised to recheck the measurements

Alwoodley Office Sales
 1-3 The Avenue
 Alwoodley
 Leeds
 West Yorkshire
 LS17 7BD

0113 870 4443
 hello@monroestateagents.com
 www.monroestateagents.com

