




MILL COTTAGE

Wrexham



Welcome to Mill Cottage —a hidden gem where nature, luxury, and modern living meet in perfect harmony. Tucked away in a serene, private oasis, this home offers an extraordinary escape from the everyday. Imagine working from home surrounded by nothing but the soothing sounds of a waterfall and birdsong—no traffic, no distractions—just peace. Nestled on the rural outskirts of Wrexham, close to Chester, Mill Cottage presents an exceptional opportunity to own a beautifully restored Grade II listed home. Dating back to 1840, this historic property, once the mill of Marchwiel Hall, has been sympathetically enhanced and extended to create a luxurious, modern retreat while preserving its original charm.



A HOME WITH CHARACTER & MODERN LUXURY



As you approach through two sets of electric gates, the long private driveway winds through serene cornfields, opening to the cottage's spacious gravel courtyard, offering ample parking. The home itself is an architectural masterpiece, with a blend of stone, painted brick, and decorative beams under a slate-tiled roof.





Step inside to explore 2,637 square feet of beautifully crafted living space. To the left of the entrance hall, a pocket door opens to a guest WC. To the right, move into the reception area featuring striking tiled flooring, and a second reception room currently used as an office which offers great versatility as this could be used as a dining room, playroom or even a guest bedroom.





Descend the elegant oak and glass staircase into the breathtaking kitchen and breakfast room, showcasing shaker-style oak cabinetry, sleek quartz countertops, and gold accents, all thoughtfully designed for luxurious living.



The natural limestone flooring continues, with a staircase leading to the spacious family or games room below, with a handy utility room hidden away with access to the garden.





The sitting room is a spacious, light-filled area with dual-aspect views of the surrounding woodlands and lawn. The sleek fireplace and rich oak flooring, with a roaring log burner creating the perfect atmosphere to enjoy the beauty of the changing seasons from the warmth of home.

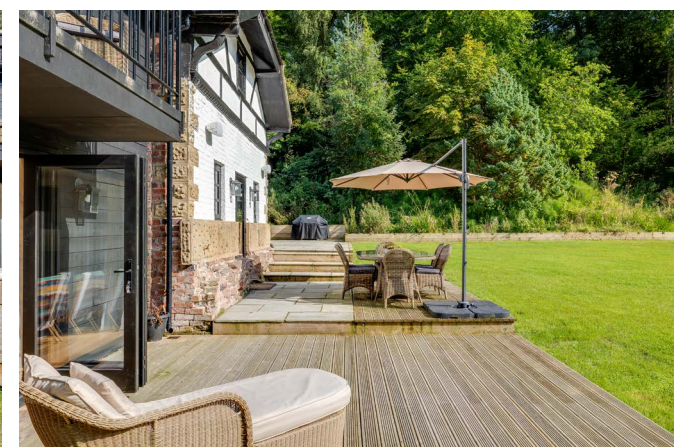


The surrounding grounds are a horticultural oasis, with stunning lake views and the magical Gefeilau Brook, complete with its own waterfall, running alongside the home. The balcony off the principal bedroom offers a peaceful retreat where you can sip your morning coffee or evening wine while listening to the soothing sounds of the water.



A SEAMLESS BLEND OF & OUTDOOR LIVING

One of Mill Cottage's highlights is its seamless connection to the outdoors. The bifold doors open up to a south-facing garden, which enjoys sunlight all day, creating an ideal space for al fresco dining or parties under the stars. The property's extensive outdoor Sonos sound system ensures your gatherings are set to the perfect soundtrack.

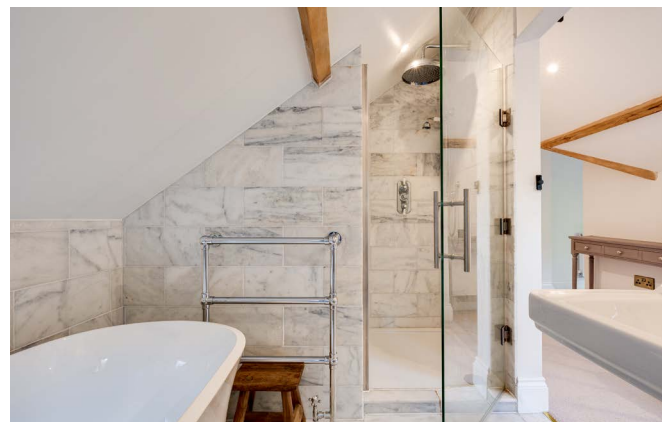




A ROOM WITH A VIEW

Upstairs, you'll find four generously sized double bedrooms. The principal bedroom features a luxurious en suite bathroom and a walk-in wardrobe, with access to a private balcony offering views of the peaceful surroundings.

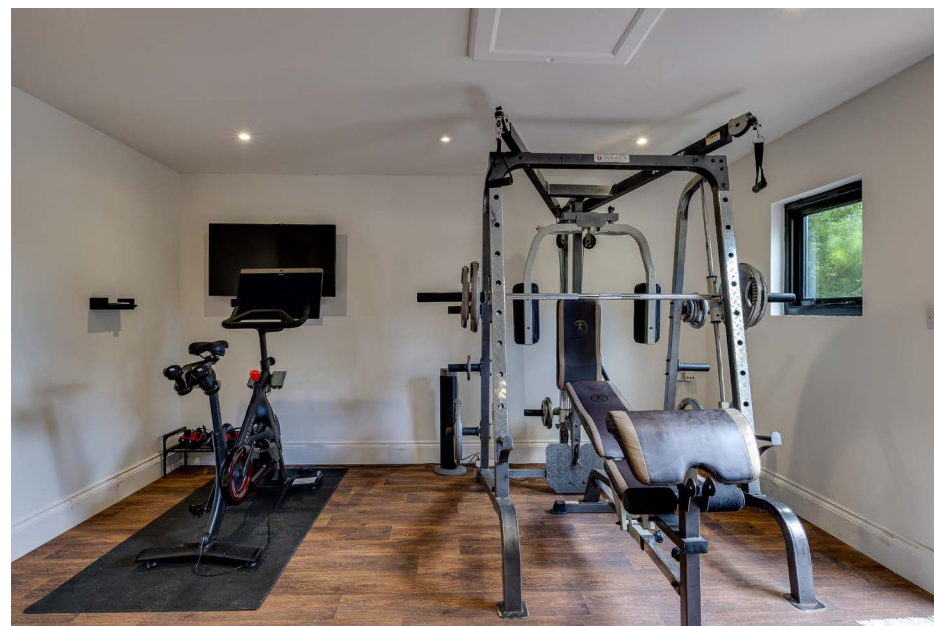




Each of the other bedrooms benefits from inspiring rural views, with the second bedroom featuring skylights that allow natural light to flood the space. There's also a spacious family bathroom and a well-appointed study area on the first floor.

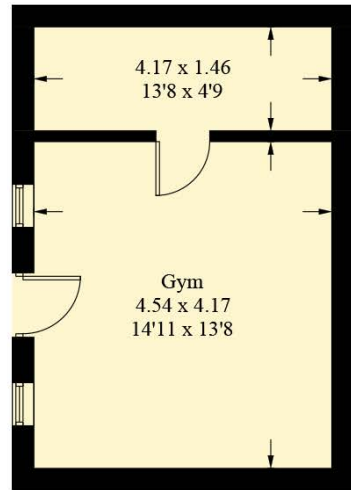
MODERN COMFORTS MEET TIMELESS CHARM

This home has been future-proofed with all the modern amenities you could wish for including Sonos speakers in the ceilings and outdoors, CCTV, Hive heating controls, and a convenient electric car charging point ensure modern comfort. Despite being surrounded by nature, the home is equipped with high-speed internet, with cables running to nearly every room, ensuring you're always connected. Outside, find a stylish outbuilding in keeping with the aesthetic of the home with a fully equipped gym and store room. Also connected to the WIFI, creating possibilities for a separate home office or even an annex (subject to planning). In addition to this, find another store building in the garden for all your gardening equipment.

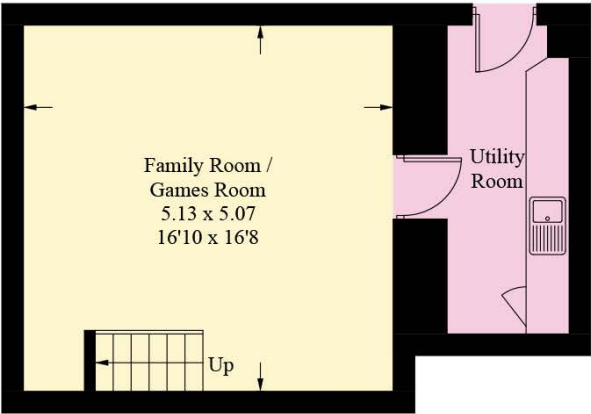


Mill Cottage isn't just a home — it's a sanctuary, a rare find that combines tranquility, style, and cutting-edge living, all within easy reach of Chester and Wrexham. Whether it's summer, winter, or any season in between, this property offers a lifestyle that's truly special.

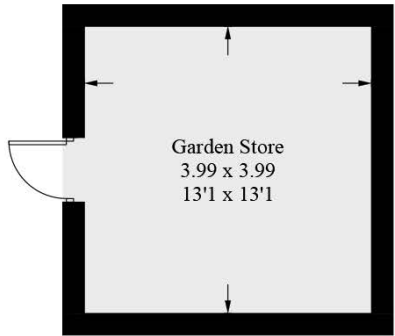




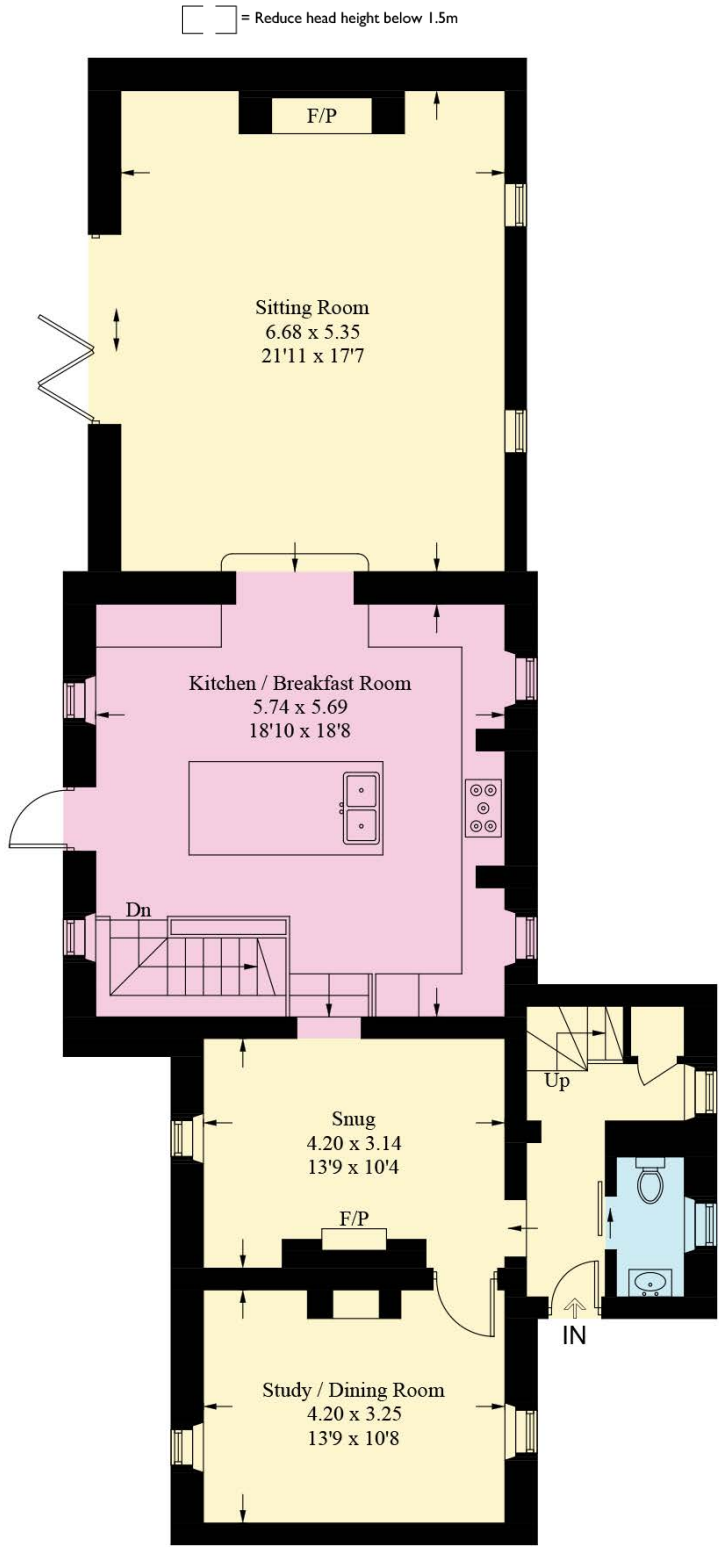
(Not Shown In Actual Location / Orientation)



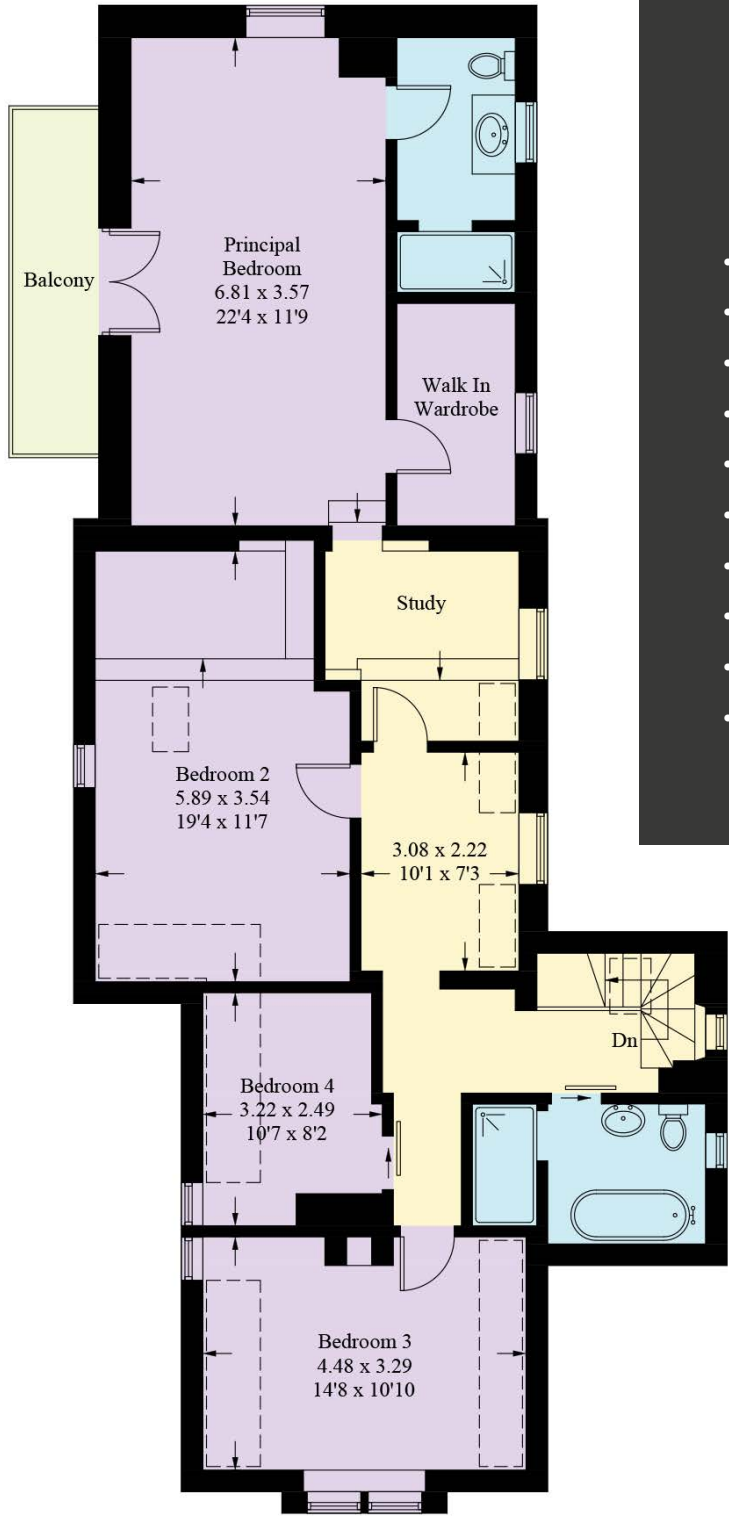
Cellar



(Not Shown In Actual Location / Orientation)



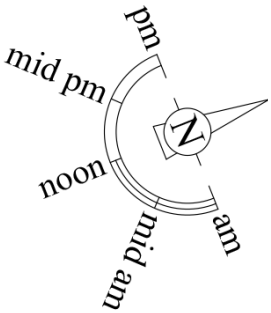
Ground Floor



First Floor

FINER DETAILS

- Freehold
- Council Tax Band G
- Dating back to 1840
- Fully renovated in last 2 years
- 2 Sets of electric gates to enter the property
- Oil central heating
- Gym/Store room
- South facing garden
- Sonos speakers
- Grade II listed



Score	Energy rating	Current	Potential
92+	A		
81-91	B		84 B
69-80	C		
55-68	D	64 D	
39-54	E		
21-38	F		
1-20	G		

Approximate Gross Internal Area = 245 sq m / 2637 sq ft
 Outbuildings = 42 sq m / 447 sq ft
 Total = 287 sq m / 3084 sq ft

Illustration for identification purposes only, measurements are approximate, not to scale. floorplansUsketch.com © (ID1125662)



MILL COTTAGE

Wrexham

Mill Cottage, Marchwiell, Wrexham LL13 0SS



WHAT3WORDS: field.scrapping.claims



To view Mill Cottage
Call: 01244 313 900 | Email: sales@curranshomes.co.uk

18 Grosvenor Street, Chester CH1 2DD
www.curransunique.co.uk