



BRYNGWENALLT HALL
— *Abergele* —



“It was built in 1856, but it feels like it was designed by a modern architect. It’s always light, it feels friendly and safe.”

With spectacular sea views, fairytale tower and enchanting 1800s architecture, Bryngwenallt Hall, an iconic Grade-II listed rural refuge, beckons from the woodland fringes of beautiful Abergele. Grand and homely, spacious yet cosy and brimming with an array of contemporary comforts belying its 168-year-old heritage, Bryngwenallt Hall defies conventional expectations of period living.



Photographs were found in one of the cottages in the grounds showing the internal hall in exactly the form that we'd created. We'd returned it to its original design without realising it."

Designed by renowned Welsh architect Richard Owen, Bryngwenallt Hall, embraced by mature woodland and elevated to ensure far reaching coastal vistas, was built – reputedly with stone quarried from the Allt Wen to the rear of the site itself – for MP John Roberts, whose son went on to become the first Baron of Clywd. Following the second world war, the vast mansion of Bryngwenallt Hall was rented out as apartments, and partially dismantled before being purchased a quarter of a century ago by its current owners, who have lovingly restored and reimagined Bryngwenallt Hall as a warm and welcoming family home.



HISTORIC HOME OVERLOOKING THE WELSH COAST

Replastered, reroofed, rewired, replumbed and reloved from top to bottom, Bryngwenallt Hall now presides over the countryside as a testament to perseverance and preservation; original features retained and restored, in part through a showstopping installation of a stunning reception hall, bringing the outdoors in. Wrought iron gates and a private road lead up to the white wooden gates of Bryngwenallt Hall, where a 300-metre driveway sweeps up to the imposing stone hall. Ample parking is available, alongside a series of large outbuildings ideal for storage.





A GRAND ARRIVAL

Ahead, the grand arched entrance to Bryngwenallt Hall beckons, lined in Minton tiles which flow through to the entrance hall, skimmed in layers of ornate coving to the high ceiling and dressed in modern indigo blue to the walls.

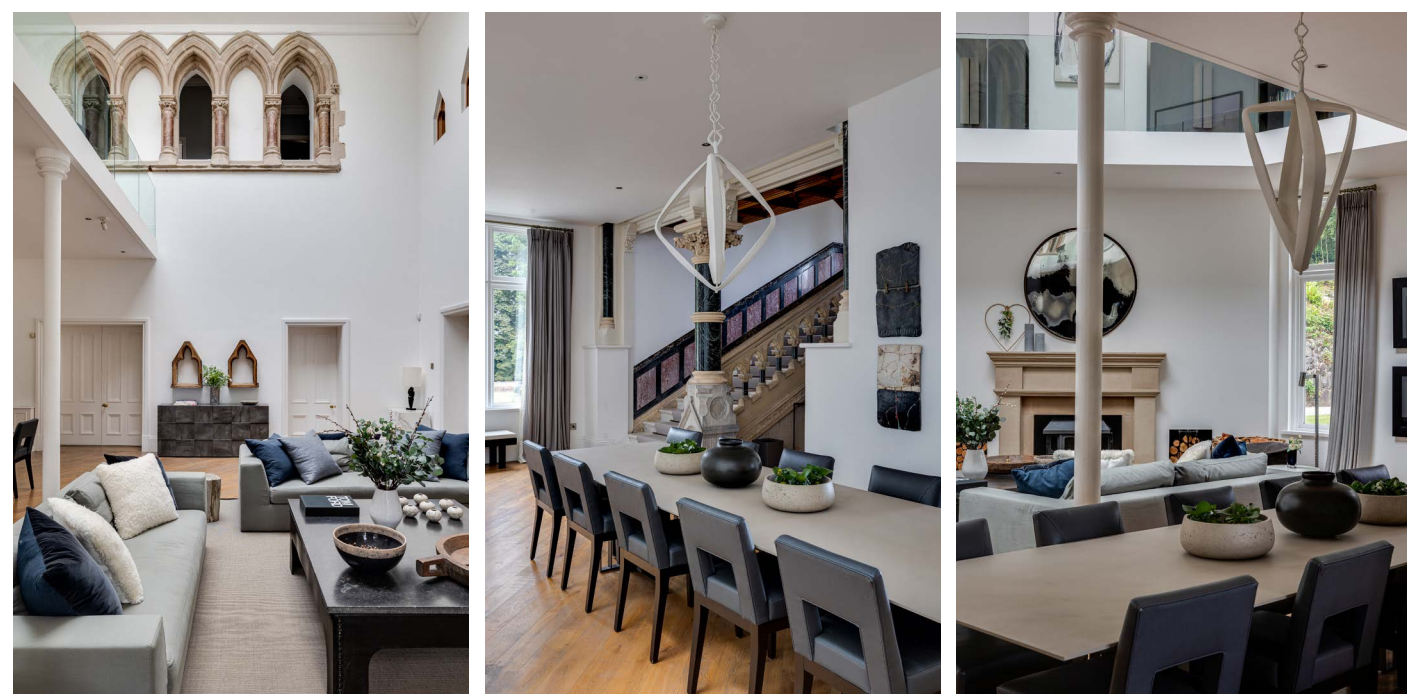
On the right, double doors open to the business wing of the home, where there is a handy downstairs WC and wash basin and access to a large office. Formerly the billiards room, original pitch pine flooring extends underfoot, with layers of intricate, detailed cornicing skirting the high ceiling. Large windows draw in an abundance of daylight, seasoning the working day with inspirational vistas out over the garden and mature, centuries old trees. A modern log burner is nestled within the chimney breast, emanating warmth.

“Christmases are stunning, there is space for a big tree and room for all the family around the dining table.”





SPECTACULAR SPACES



On the left, access the 60ft tower, through a door on the left. From the entrance hall, open the double doors ahead and step into the reception hall: the sociable heart of the home. Suffused with light, a roof lantern above and contemporary gothic arched window draw the daylight in, whilst underfloor heating infuses this vast space with comforting warmth.





Minimalist pillars rise up, for a modern feel that sits comfortably with the character and heritage of the home. Once open to the elements, this convivial hub is now at the centre of family life, with seating areas, a large dining table and a stunning stone fireplace with log-burning stove. Above, a glass enclosed balcony, currently utilised as an office area, overlooks the living space. Throughout Bryngwenallt Hall, seamless sophisticated décor and furnishings feature, the work of high-end interior designer Lissi London, blending modern living with the comforting embrace of this stone built Victorian hall.





Tucked off the reception hall is a large storeroom, whilst double doors lead to the family room. Currently serving as a spacious playroom, views extend out over the beautifully landscaped garden through a bay window. Intimate and enveloping, the formal sitting room opens up from the reception hall through glazed, bifolding doors. Beckoning quiet nights snuggled up on the sofa, a contemporary glass fronted log-burning stove glows invitingly, inset within the wall. Above, intricate coving embellishes the ceiling, whilst views extend out to the leafy fringes on the periphery of the garden and the coastline beyond.

“Both rooms with the doors connecting allow you to move through easily, so the main living spaces blend well, whether you’re watching television in front of the fire or spending time together as a family.”





“There are fires everywhere – we don’t need the heating on. The underfloor heating in the reception hall heats the whole house.”

From the sitting room, a door connects you effortlessly to the light-filled family breakfast kitchen. Redesigned by celebrated City interior designer Lissi London, dark grey, Shaker-style cabinetry and subdued lighting combines with tall windows creating a bright and airy culinary hub by day and ambient, atmospheric entertaining space by night.

With space to wine and dine, and recline and unwind, a log-burning stove infuses warmth on winter days, whilst an array of appliances including a Sub Zero fridge, Miele oven and microwave, built-in dishwasher and Gaggenau induction hob, with down draught extractor within the central island breakfast bar, help you to cook up a feast for family and friends.

Dine alfresco, stepping out from the kitchen and onto the broad patio, where the serenity of the surroundings embraces you. Perfect for entertaining, relaxation and summer barbecues, an outdoor heater ensures the terrace remains accessible for enjoyment year-round.

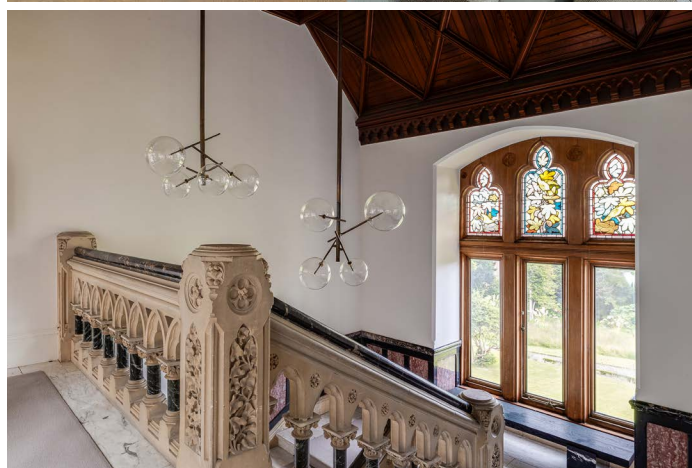




Coming out of the kitchen, tucked away beneath the stairs, stained-glass windows adorning the laundry room infuse the everyday details with a splash of glamour. Returning to the reception hall, glance up to spy the detailing in the carpentry in the pitch pine panelling of the staircase overhead. Meticulously crafted, the refined elegance of the marble staircase exudes timeless sophistication, its neutral toned runner cascading down the centre, secured by brass rods for a touch of understated luxury. Richly veined marble of darker tones, and ornately carved newel post contrast to the cool white marble of the staircase, ensuring this sublime structure takes centre stage.



“The marble specialist who worked on the bathroom commented that they thought the marble in the staircase was one of the most expensive in the world.”



Intricately carved trefoil arched stonework reveals itself upon arrival on the first-floor landing, now under cover of the impressive glass roof of the new reception hall and mezzanine landing. Currently serving as an airy and light filled office space, the mezzanine level is enclosed by glass balustrades, affording unbroken views down over the living space below. Original, gothic stone carved archways accompany a modern neo-gothic window, preserving the far-reaching views out over the garden.





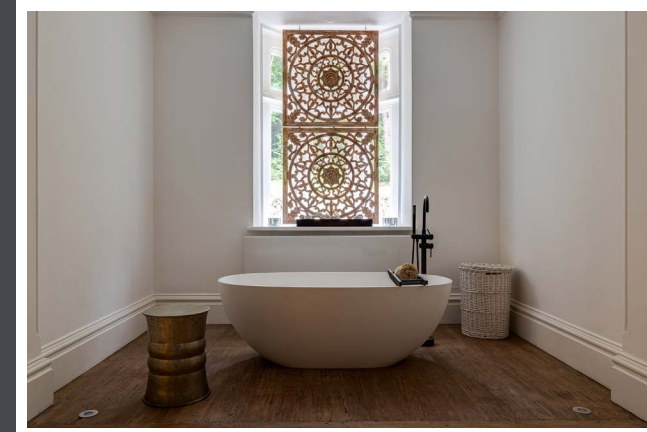
Turning left along the main landing, sneak a peek at the principal ensuite, where herringbone tiled flooring flows underfoot and light streams in through a large casement window. Sit back and soak in the deep, double ended bath, encased in marble, whilst enjoying far reaching views out to sea. Twin wash basins are also carved from marble, dressed in gold taps and towel rails, with vanity unit drawers offering storage beneath. Refresh and revive beneath the drench head of the walk-through, wet room shower, also served by a showerhead attachment, and recessed alcove shelving. There is also a heated towel radiator.

Step through into the principal bedroom, a bountiful bedroom suffused in light from large windows to two sides. Wake up to sea views in the bespoke freestanding bed. A bright, airy and open space with clean and calming grey toned décor, leave the linen curtains open and watch the distant lights twinkling along the coast by night. Built-in wardrobes provide plenty of storage for all your clothes and accessories.





Turning left out of the principal bedroom, sneak a peek at another large bedroom, and with ample space for a super king size bed. Lush views extend once more over the mature and flourishing garden. Carpeted in light tones, the ceiling height at Bryngwenallt Hall infuses every room with an airy open feel. Returning to the landing, admire the arched internal windows, before arriving at the third double bedroom next door, carpeted once more in neutral tones with soft shades to the walls, sharing those same far reaching garden views towards the sea. Steps lead down from the landing, to arrive at a sequestered guest suite, where a door opens to an inner landing, leading to a large bedroom with a deep bay window overlooking the tree fringed garden and a dressing room furnished with an array of fitted wardrobes.



Opening up from the dressing room, refresh and revive in the incredible ensuite, where a freestanding bathtub with swan neck waterfall tap is set on a plinth, beneath a striking stained-glass window for opulent bathing. There is also a separate wet-room style shower, heated towel radiator and twin wash basins with storage alongside a WC.

FAIRYTALE TOWER

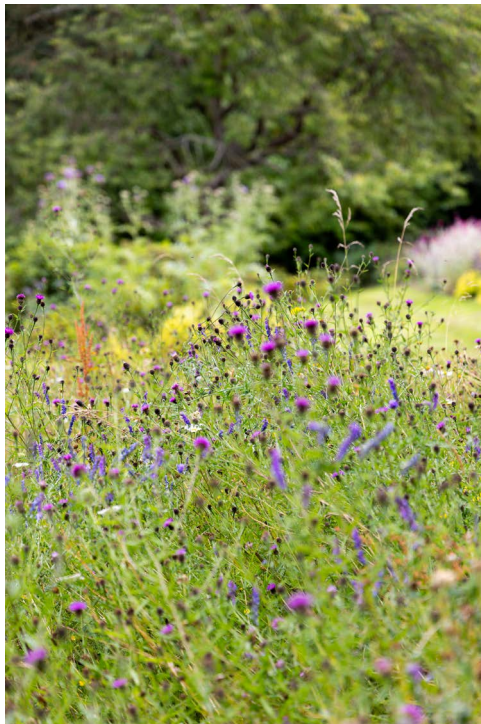
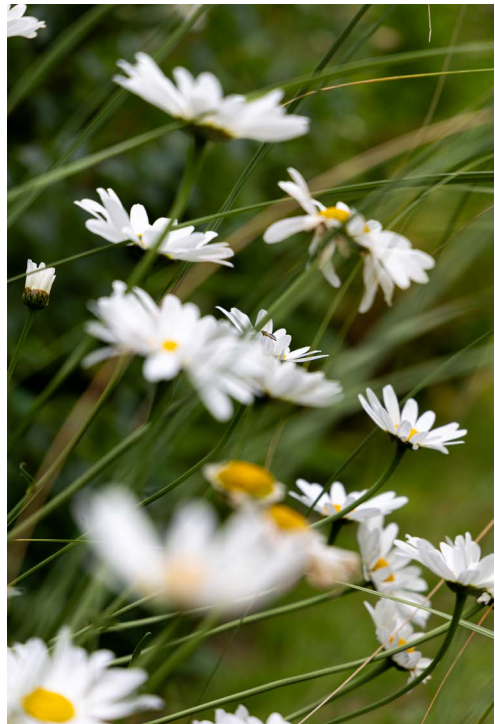
Turning left, reconnect with the mezzanine landing, or pick up the staircase that leads from the ground floor off the entrance hall and ascend up the tower to the next level, where a series of rooms including a large open plan kitchen-lounge and luxurious bathroom bring with them the potential to create annexe accommodation or perhaps serve as the ideal space for a home-run business.

“There is still so much potential. I have so many projects I could embark upon.”



KING OF THE CASTLE

From this annexe a further set of stone steps leads up within the turret of the tower itself, with stone walls, leading to a light-filled room with high ceiling and stained-glass windows offering panoramic views around the countryside, woodland and coastline. Continue your ascent up the circular medieval-feel staircase to arrive at the pinnacle of the battlements, where 360-degree views entreat. Catch the sun throughout the day, gaze out to sea and absorb all of the peace and tranquillity Bryngwenallt Hall has to offer from this serene and secluded and utterly enchanting spot.



SLICE OF PARADISE

Nestled in four acres of lush lawns and ancient woodland, step outside and invite the serene embrace of nature at Bryngwenallt Hall to restore your spirit.

Giant sequoias, cedars and specimen lime trees spanning back 170 years offer shelter and shade whilst acres of flat lawn provide plenty of scope for enjoyment for all ages. Designer led planting ensures the borders and beds are filled with colour, flowering successionaly throughout the seasons.

Follow the meandering pathways and discover all the delights of the garden, with two stone follies sure to stoke the imaginations of children and grown-ups alike. A rewilded section of garden is a haven for pollinators and nature in general, whilst the paved patio outside of the home is ideal for entertaining.

A practical yard area of the garden with sheds is the perfect place to stash lawnmowers and tools, also accommodating the stone from the original home for any future projects you might wish to embark upon.

Recline and unwind on the patio, gazing out to sea, or simply admiring the verdant surrounds of the garden, whose design narrates the passage of the seasons, from the first snowdrops and crocuses peeping through in early spring, to the herald of yellow daffodils, all in tune with the turn of the earth as it makes a fresh revolution around the sun.





ROOM TO GROW

There is still plenty of scope to make your own mark on Bryngwenallt Hall, from the garden follies to the romance of the 60ft tower annexe. Planning permissions have also been granted for a two-bedroom apartment with car port-garage accessed from the utility room. The original stone from pre-World War 2 Bryngwenallt Hall has been retained in the yard for just such a project.

“We love being outdoors, you can stay out ‘til late into the evening in summer. There is always something to do.”



“WHERE DO THE OWNERS
GO WHEN THEY NEED...”



Dinner:
Bryn Williams at Porth
Eirias



Milk:
Tesco



Walk:
Rear of the property access
into the woods



Spa Day:
The Quay



Day Out :
Anglesey





“We are in a sea of tranquillity, hidden from the world but not isolated –
it’s not far from anywhere.”



OUT & ABOUT

Reassuringly rural but not remote, civilisation is close at hand, hidden away behind the protected Abergele woodland, accessible through a gate and offering miles of enchanting walks and limestone trails, ideal for those with canine companions. Within an hour and a half’s commute from Abergele station, connect with Manchester, with direct trains available to the airport. For days out at the beach with the children, Anglesey is only 40 minutes’ drive away, or for wintry walks and atmospheric mountain landscapes, Eryri (formerly Snowdonia National Park) is accessible in around 50 minutes. Pensarn beach is on the doorstep, whilst the magical beaches of Rhos on Sea are a mere ten minutes’ drive away along the coast via Colwyn Bay. Brimming with restaurants, cafes and shops, dine out at internationally acclaimed chef Bryn Williams’ Porth Eirias and sample their stunning fish courses. Experience the Victorian seaside allure of Llandudno with its beautiful promenade, or head to the ancient fishing village of Conwy and explore the famous castle.

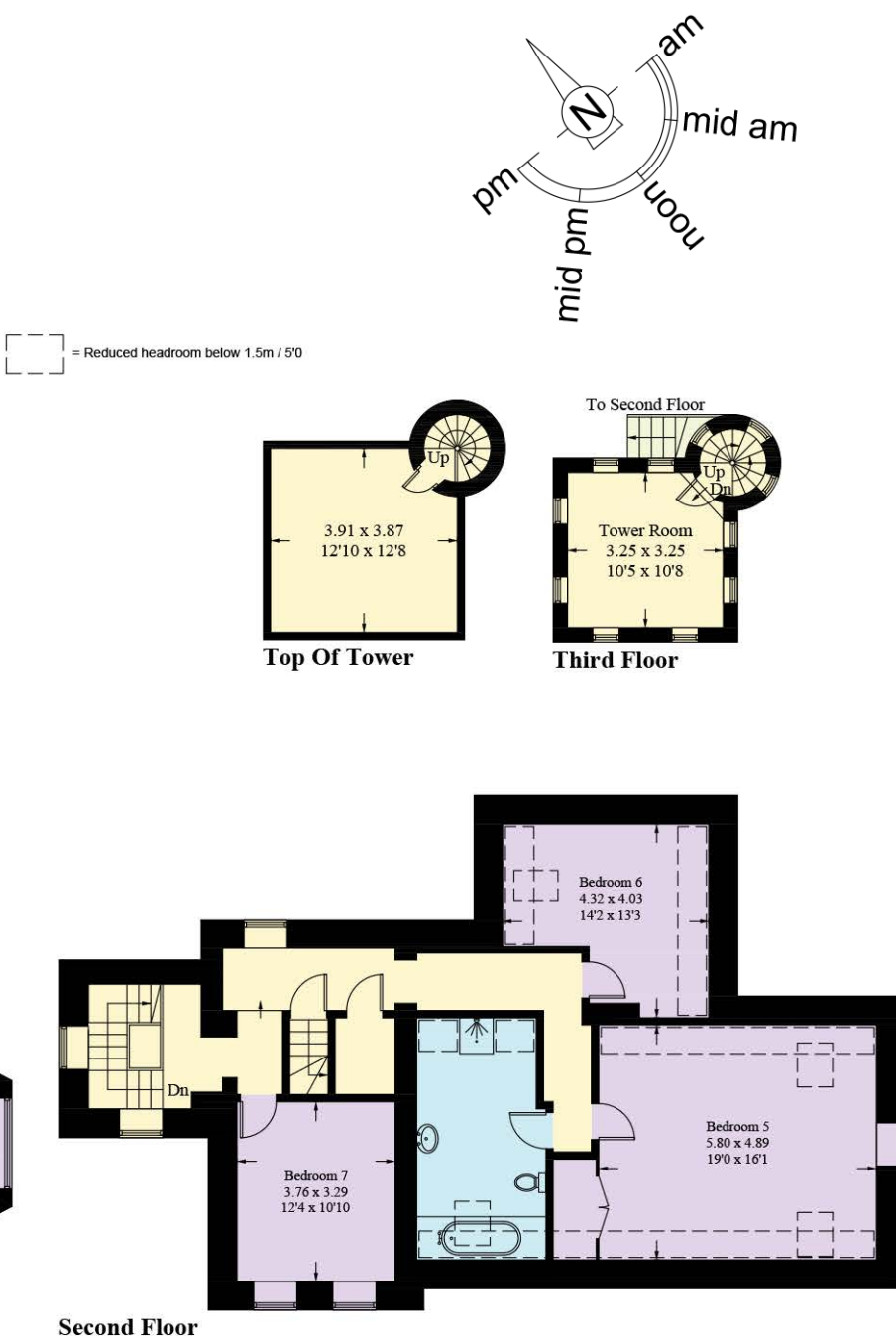
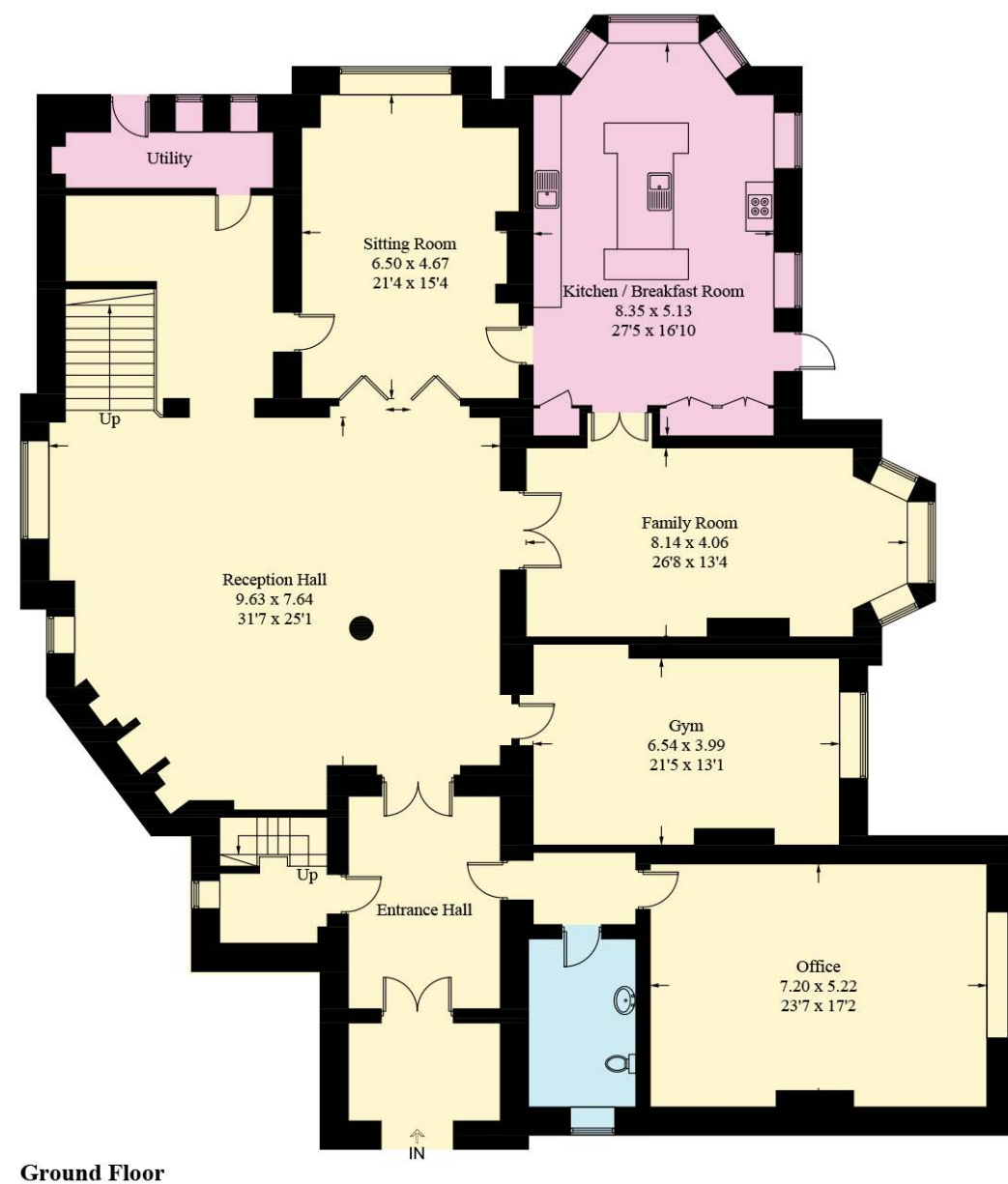
Families are perfectly placed for educational opportunities with a host of esteemed independent schools close by including Fairholme Preparatory School, just 15 minutes from Bryngwenallt Hall alongside Myddelton College in Denbigh. There is also a local primary school close by with buses running from North Wales through to King’s and Queen’s Schools in Chester. For shopping, Abergele is well furnished with shops, nail salons and a Tesco supermarket, with Chester a mere 40 minutes’ away by car. Broughton is also close by with a cinema for movie nights, whilst Prestatyn, just 15 minutes’ drive from Bryngwenallt Hall boasts an M&S. Experience the beauty of life at Bryngwenallt Hall, where character is balanced by charm, contemporary comfort by homely warmth and where indoor and outdoor living combine. Bryngwenallt Hall, restored to the height of its grandeur serves as a bubble of comfort and calm amongst the hustle and bustle of modern life.

*** Whilst every effort has been taken to ensure the accuracy of the fixtures and fittings mentioned throughout, items included in sale are to be discussed at the time of offering ***



FINER DETAILS

- Grade II listed
- Originally built in 1860
- Completely renovated throughout
- Tower
- Two Follies on the grounds
- Planning permission for further extension
- Underfloor heating in main reception room
- Gas central heating
- 5 Log burners
- Office space for business
- Trees are protected
- Mains drains & water





BRYNGWENALLT HALL

Abergele



WHAT3WORDS: [deliver.september.headset](https://www.what3words.com/deliver.september.headset)

CURRANS

unique homes

To view Bryngwenallt Hall
Call: 01244 313 900 | Email: sales@curranshomes.co.uk

18 Grosvenor Street, Chester CH1 2DD
www.curransunique.co.uk