

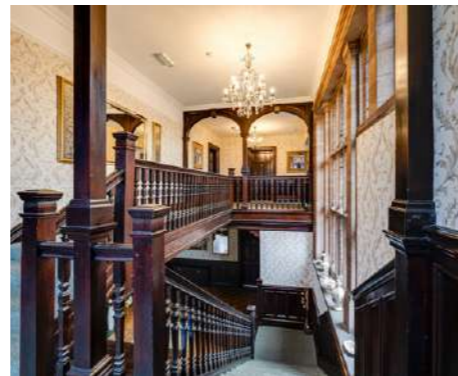


GILWERN HOUSE

CHESTER



Welcome to 5 Gilwern House, where the grandeur of traditional Cheshire architecture blends with modern luxury to offer an unrivalled living experience in the heart of Chester. Built in 1903 and situated off a quiet street, this impressive building boasts the beautiful red brick and sandstone features that made this architect of yesteryear the celebrated figure he was.



Welcome

Climb to the top of this splendid house, passing numerous period features in the hallways along the way and arrive at the entrance to the penthouse apartment. Walk into a large and bright hallway and you will find beautifully appointed rooms filled with light and conveniently all on one level.

Living Spaces

Turning into the living area, charm exudes from every corner, from the rustic beams overhead to the enchanting windows and the warmth of the classic fireplace. Beyond lies a versatile space, perfect for dining or additional seating, adorned with doors that reveal a bijou roof terrace. Here, amidst the rooftops, you can enjoy breathtaking sunsets in seclusion and tranquility.

Gourmet Kitchen

The journey continues to the kitchen, where culinary dreams come alive. High windows and original beams cast an airy light over the large island, while the well-appointed kitchen features all the appliances necessary for modern gastronomy. Adjacent to this is a generous utility room, offering ample storage solutions, keeping your living spaces uncluttered and serene.





Restful Retreats

Retrace your steps to the main hallway, where a comfortable bedroom awaits, complete with an en suite that ensures privacy and ease. Further along, the master suite beckons, a luxurious haven with a spacious bathroom that promises relaxation and rejuvenation.

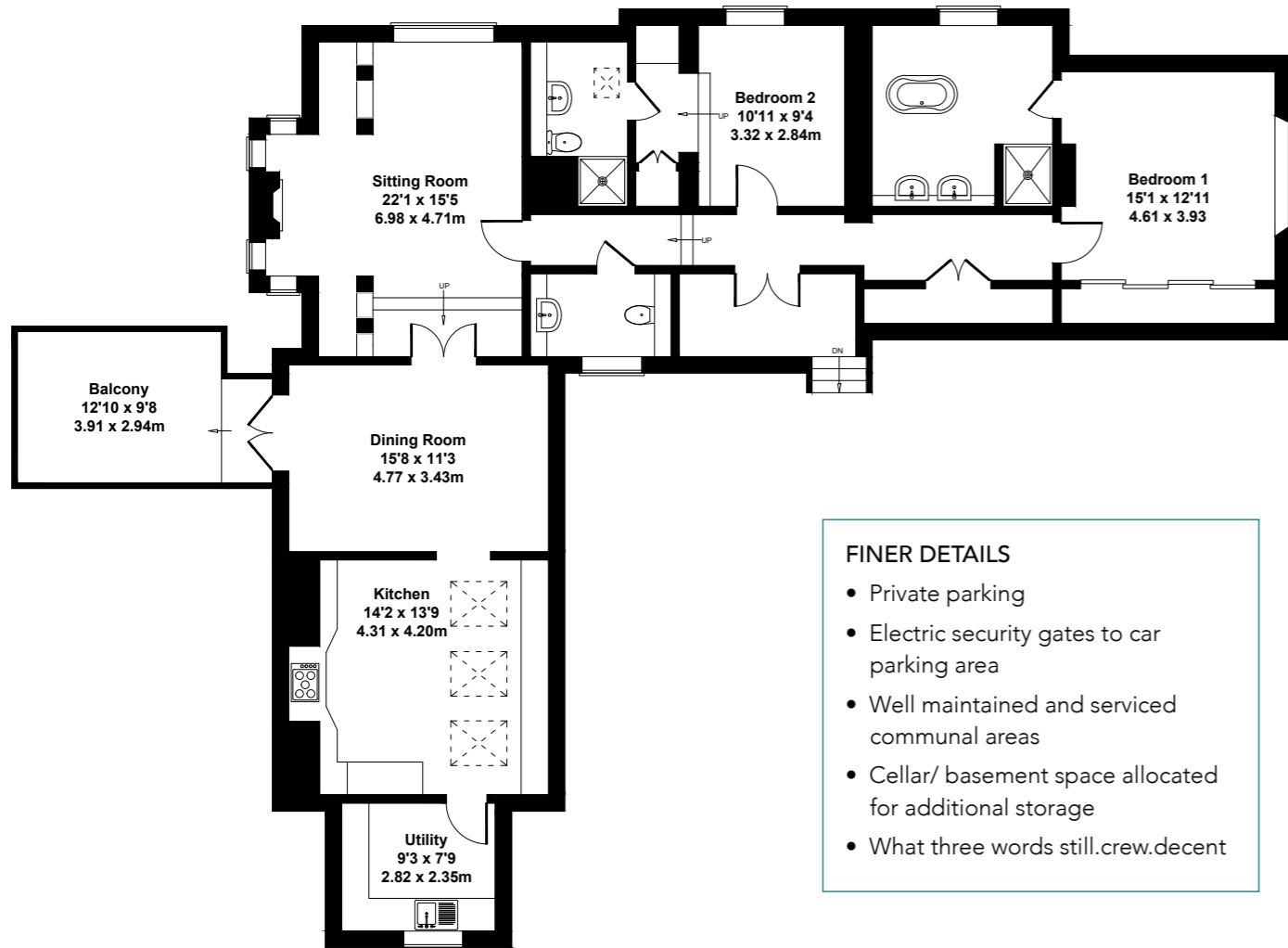
Communal Splendor

Wander through the communal hallways where Walter Crane's legacy shines through the beautiful lead-stained windows. As an illustrator prominent in the Arts and Crafts movement, his work adds an artistic narrative to the penthouse's approach, enhancing the building's historical narrative.





Approximate Gross Internal Area
1561 sq ft -145 sq m



FINER DETAILS

- Private parking
- Electric security gates to car parking area
- Well maintained and serviced communal areas
- Cellar/ basement space allocated for additional storage
- What three words still.crew.decent

SKETCH PLAN FOR ILLUSTRATIVE PURPOSES ONLY

All measurements walls, doors, windows, fittings and appliances, their sizes and locations, are approximate only. They cannot be regarded as being a representation by the seller, nor their agent.

Produced by Potterplans Ltd. 2023

Chester On Your Doorstep

Positioned a mere fifteen-minute stroll from Chester city centre, this property isn't just a home; it's a lifestyle choice. Immerse yourself in the enchanting Tudor "Rows", indulge in diverse restaurants and coffee shops, and partake in the serene parks and picturesque riverside walks along the River Dee.





GILWERN HOUSE

CHESTER

presented by



/// WHAT3WORDS: ???

To view5 Gilwern House
Call John
on 01244 313 900
Email: john@curransunique.co.uk

18 Grosvenor Street, Chester CH1 2DD
www.curransunique.co.uk



SCAN ME TO
BOOK A VIEWING