

BECKETT
FOUR
BEDROOM
HOME

BLOOR HOMES



A four bedroom detached home comprising a spacious lounge with a fantastic open plan kitchen / dining area featuring a separate utility room and French doors leading to the garden. Upstairs there are four bedrooms with the master benefitting from fitted wardrobes and an en suite shower room.

BECKETT

AN IMPRESSIVE FOUR
BEDROOM FAMILY HOME

**BECKETT
FOUR
BEDROOM
HOME**

FIRST FLOOR:

BEDROOM 1
3.55m x 2.75m
11'8" x 9'0"

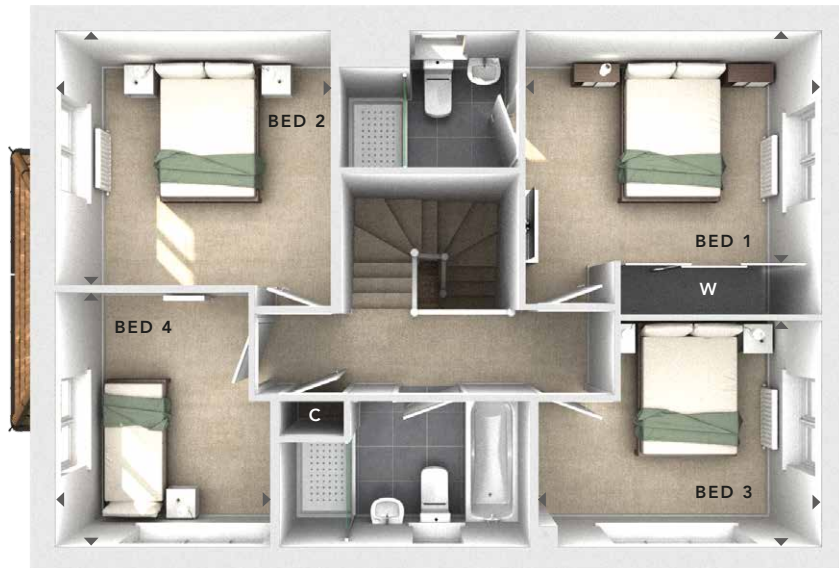
EN SUITE

BEDROOM 2
3.29m x 3.05m
10'9" x 10'0"

BEDROOM 3
3.38m x 2.70m
11'1" x 8'10"

BEDROOM 4
2.57m x 3.05m
8'5" x 10'0"

BATHROOM



**FIRST
FLOOR**

GROUND FLOOR:

LOUNGE
3.47m x 6.18m
11'5" x 20'3"

KITCHEN / DINING
4.25m x 6.18m
13'11" x 20'3"

UTILITY
1.54m x 1.60m
5'1" x 5'3"

CLOAKS



**GROUND
FLOOR**

W	- Fitted Wardrobes
C	- Storage
△	- External Access
◀ ▶	- Measurement Points
© Bloor Homes • NSS 490R 4.1	



These particulars are intended as a preliminary guide for prospective purchasers and should not be relied upon. The elevational treatment for individual house types shows a typical arrangement. Details of materials and design treatments may vary. Any artist impressions shown are not intended to represent any particular plot. Purchasers are advised to inspect the layout plan to establish the arrangement of the house and surrounding property. Internal layouts show a general arrangement which may vary from plot to plot. Room sizes given are approx. overall finished room sizes and subject to normal building tolerances (ie ± 75mm). In all instances purchasers are advised to inspect plot specific information available from our sales team. Nothing in these particulars or verbal assurance shall form or constitute part of any contract, and are given without any responsibility on behalf of Bloor Homes.