





Accommodation

A recently constructed, executive four bedroom detached family home, offering a generous corner plot and good sized enclosed rear garden. The property is one of just two of this style built on this select and highly desirable development, offering a flexible layout and approximately 1500 square foot of living space in total.

The property offers a very high specification finish and subtle improvements have been made by the current owner, including a media wall and feature fireplace to the living room. As expected with a property constructed in 2022, the property proves an energy efficient home, whilst also benefiting from the balance of the new build warranty.

On the ground floor the main entrance door leads into a spacious tiled entrance hall, with stairs rising to the first floor, storage cupboard and further understairs storage, plus the good size cloakroom/WC. The main living room feel very homely, with the stylish feature wall incorporating a fire, which helps to create a relaxing space. A snug/study offers a further flexible living space, ideal for modern family life. The utility room comes fitted with modern units and an integrated washing machine, whilst also housing the gas central heating boiler and offering rear door access to the driveway. The open plan kitchen/diner/family room certainly has the wow factor, offering a fantastic entertaining space, being fully tiled and with double doors leading to the rear garden. The stylish kitchen comes fitted with an extensive range of modern units to match the utility, incorporating fitted appliances and feature lighting. To the first floor there is a landing with loft access and fitted airing cupboard. The stunning main bedroom offers a Juliet balcony, dressing area with fitted wardrobes and a fully tiled ensuite shower room. There are three further good size bedrooms, one with fitted wardrobes, and the modern house bathroom, fitted with a white suite, including a bath with glazed screen and shower over.

Externally the house offers driveway parking and access to the single detached garage. The rear garden is a great size and fully enclosed, being ideal for purchasers with pets and children. The garden is a currently somewhat of a blank canvass, but it offers endless potential to landscape.

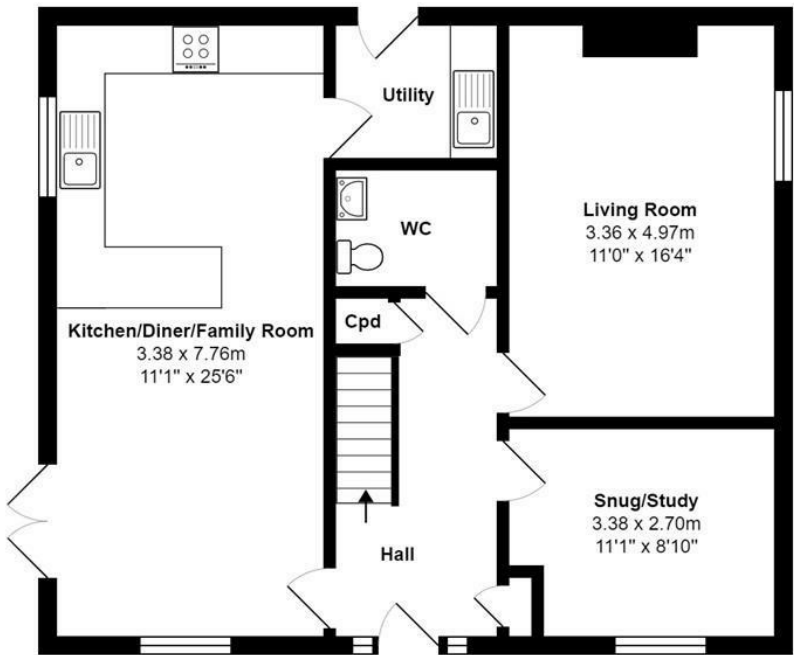
Situated in the picturesque village of Dishforth. The property offers ease of access to local transport links, including the A1(M) and A19, whilst also being a short drive from Ripon and Thirsk. Dishforth itself boasts a number of amenities, including two public houses, a primary school, part time post office, village hall and children's play area.

An early viewing is advised on this lovely family home, which demands an internal inspection.

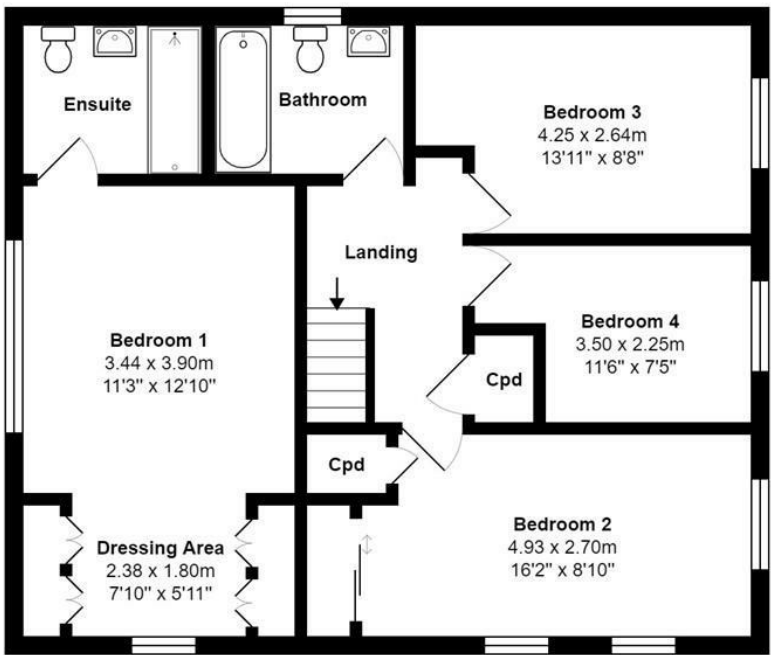




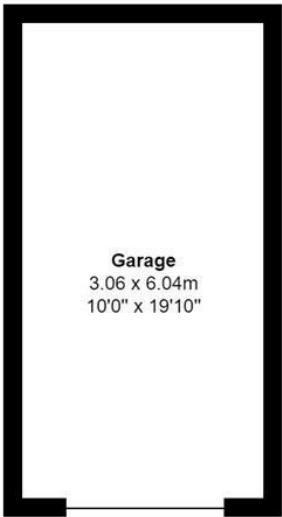
Floorplan



Ground Floor



First Floor

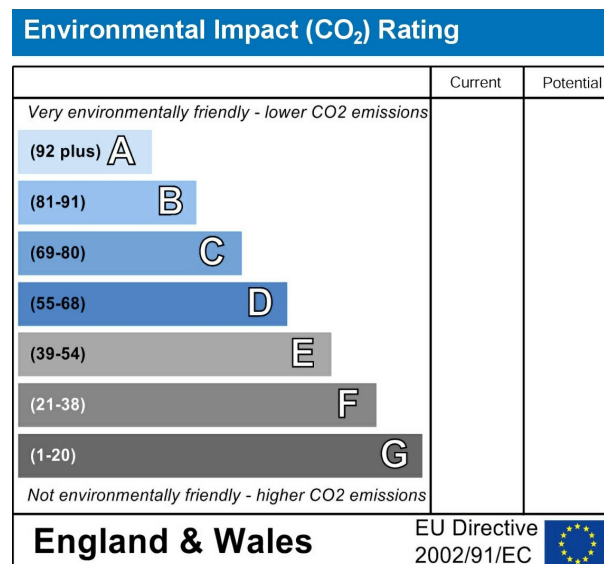
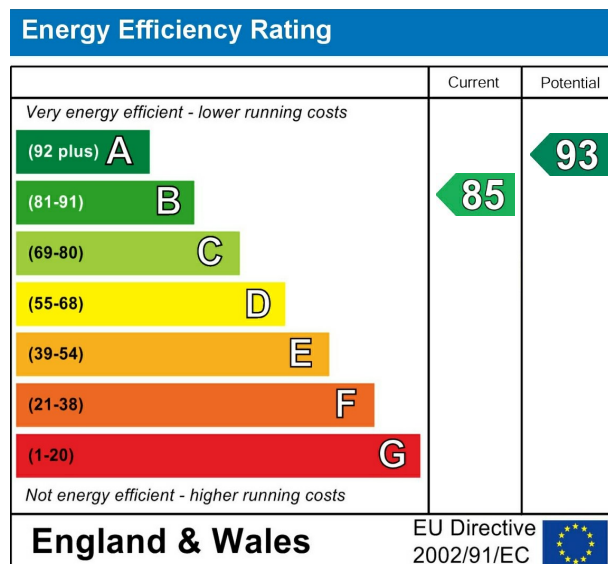


Garage





EPC



VIEWING BY APPOINTMENT ONLY - 01845 421010 - sales@davislund.co.uk - www.davislund.co.uk

MONEY LAUNDERING REGULATIONS 2003 - Intending purchasers will be asked to produce identification and proof of financial status when an offer is received. We would ask for your co-operation in order that there will be no delay in agreeing the sale.

Davis & Lund Ltd trading as Davis & Lund, registered office: 5a Kirkgate, Ripon, HG4 1PA. Registered in England No 10034416. Registered for VAT No 243 2008 51

Davis & Lund Ltd have prepared these property details on the seller's behalf. Davis & Lund Ltd have taken reasonable steps to check the content, but no information should be taken as a statement of fact. All measurements are approximate and should be taken as a guide, potential purchasers should satisfy themselves as to the accuracy. Floorplans are produced as a guide and they are not to scale. All fixtures and fittings are not included in the sale, unless stated. Heating systems, electrics, services and appliances have not been tested and no warranty is given to their working order

