



MAY WHETTER & GROSE

24 FORE STREET, ST. AUSTELL, PL26 8AS

£95,000



WELL ESTABLISHED HAIR SALON BUSINESS AND PREMISES

THE BUSINESS IS PROUD OF THE PROFESSIONAL AND PERSONAL SERVICE IT OFFERS TO ITS CLIENTS AND IS NOW READY TO BE PASSED ON FOR ITS NEXT CHAPTER DUE TO RETIREMENT.


LARGE CLIENT BASE AND A 'BUSINESS READY TO GO OPPORTUNITY'

ACCOUNTS & FIGURES AVAILABLE ON REQUEST.


THE VILLAGE OF ST DENNIS IS SITUATED WITHIN EASY ACCESS OF THE A30 AND OFFERS A WIDE RANGE OF AMENITIES INCLUDING A SHOP AND POST OFFICE, PUBLIC HOUSE,



Energy Efficiency Rating

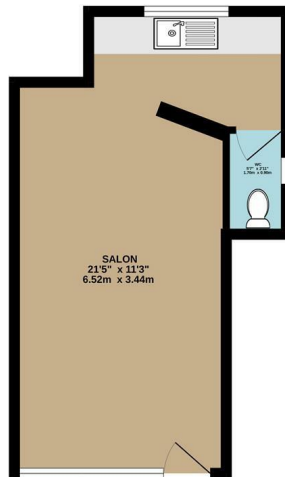
	Current	Potential
Very energy efficient - lower running costs		
(92 plus) A		
(81-91) B		
(69-80) C		
(55-68) D		
(39-54) E		
(21-38) F		
(1-20) G		
Not energy efficient - higher running costs		
England & Wales	EU Directive 2002/91/EC	

Environmental Impact (CO₂) Rating

	Current	Potential
Very environmentally friendly - lower CO ₂ emissions		
(92 plus) A		
(81-91) B		
(69-80) C		
(55-68) D		
(39-54) E		
(21-38) F		
(1-20) G		
Not environmentally friendly - higher CO ₂ emissions		
England & Wales	EU Directive 2002/91/EC	



GROUND FLOOR



While every attempt has been made to ensure the accuracy of the floorplan contained here, measurements of length, distance, areas and any other items are approximate and no responsibility is taken for any error, omission or mis-statement. This plan is for illustrative purposes only and should be used as such by any prospective purchaser. The layout, fixtures and appliances shown have not been tested and no guarantee as to their operation or efficacy can be given.
Made with SketchUp 2020

Important Notice MISREPRESENTATION ACT 1989 and PROPERTY MISDESCRIPTIONS ACT 1991

Messrs. May, Whetter & Grose for themselves and for vendors and lessors of this property whose agents they are give notice that: (i) the particulars are set out as a general outline for the guidance of intended purchasers or lessees, and do not constitute, nor constitute part of, an offer or contract; ii) all descriptions, dimensions, reference to condition and necessary permissions for use and occupation, and other details are given without responsibility and any intending purchasers or tenants should not rely on them as statements or presentations of fact but must satisfy themselves by inspection or otherwise as to the correctness of each of them. (iii) no person in the employment of Messrs. May, Whetter & Grose has any authority to make or give any representation or warranty whatever in relation to the property.

