



BRUTON
— PROPERTY —



The Barn High Street
Wallingford, OX10 7HH

Guide price £250,000



The Barn High Street

Wallingford, OX10 7HH

Fantastic freehold barn/showroom/office set over two floors complete with outside space in the historic village of Dorchester On Thames.

The barn is accessed from the High Street. Still featuring the original wooden stalls, this is a quirky and characterful building. Presently used as a showroom, the barn has A1 commercial use. Two mezzanine floors are presently used for office space and storage. Separate loo and cloakroom. There are three wood burning stoves fitted. The barn a has a small gated outdoor area at the far end.

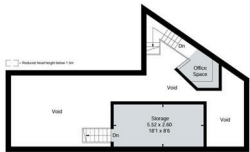
Location
Historic Dorchester-on-Thames lies within a conservation area and is a thriving and active village. There are fishing and sailing clubs on the lakes, football and cricket clubs, tennis courts, three pubs, village hall, shop, the Abbey and Catholic church and primary school.

Nearby market towns, Abingdon and Wallingford, amply provide for everyday shopping, educational and leisure requirements. Oxford City Centre only a twenty-minute drive away. Footpaths and bridleways abound, both along the Thames and towards Wittenham Clumps. The Hurst, a meadow and The Dykes, an ancient fortification, are local.

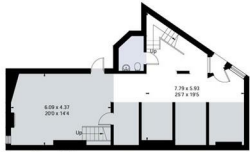
Dicot train station is a short drive away with trains to London Paddington in 38 minutes.



Fourwalls



Barn - First Floor



Barn - Ground Floor

Floor Plan




Viewing

Please contact our Bruton Property Office on 0207 459 4696 if you wish to arrange a viewing appointment for this property or require further information.

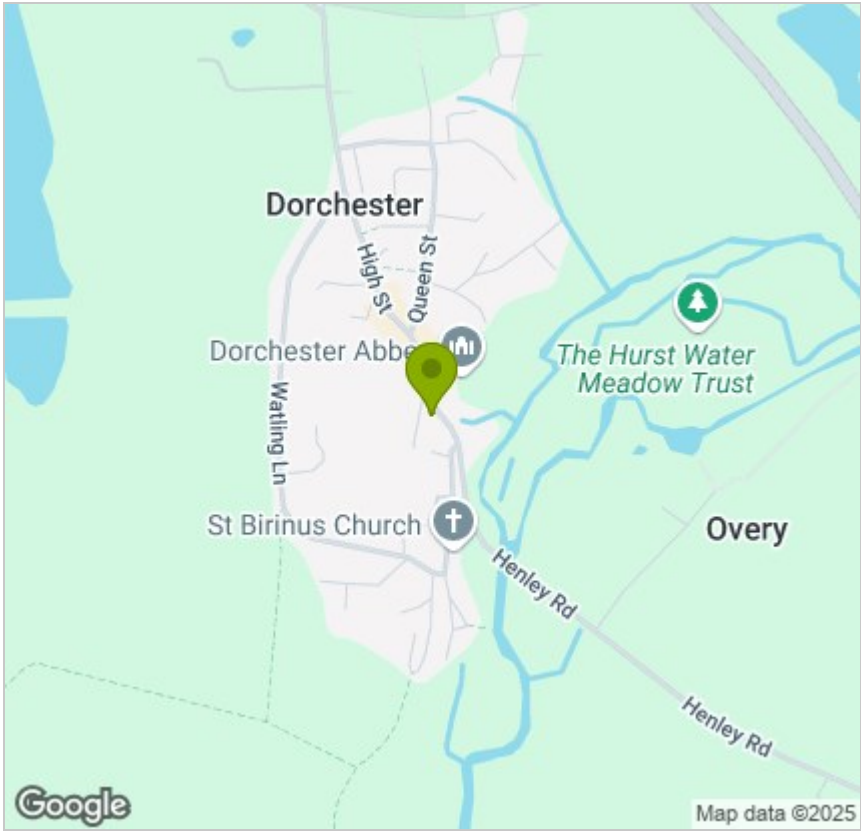
These particulars, whilst believed to be accurate are set out as a general outline only for guidance and do not constitute any part of an offer or contract. Intending purchasers should not rely on them as statements of representation of fact, but must satisfy themselves by inspection or otherwise as to their accuracy. No person in this firms employment has the authority to make or give any representation or warranty in respect of the property.

 **20 Lees Place, Mayfair**
London, W1K 6LP

 **020 7459 4696**

 **info@brutonproperty.co.uk**
www.brutonproperty.co.uk

Area Map



Energy Efficiency Graph

