



Parkside Apartments White City Living, Cascade Way
London, W12 7RE

Guide price £2,100,000



Parkside Apartments White City Living, Cascade Way

London, W12 7RE

Luxury three bedroom apartment with two balconies and one parking space in the White City Living development.

This spacious lateral apartment measuring 1,240 sq ft is finished to an excellent specification on the 11th floor.

The apartment also benefits from underfloor heating and comfort cooling throughout while floor to ceiling windows flood the apartment with plenty of natural light.

Residents' facilities include 24-hour Concierge, swimming pool with sun terrace, Residents' Club Lounge, therapeutic hydro-pool, dining room and private kitchen, fully equipped gym with rooms for personal training and classes, treatment and massage rooms, café, two 12-seat private cinemas with food and drink facilities, business lounge and meeting rooms, entertainment suite and secure parking for one car.

Two Underground stations are on the edge of the development: White City (Central Line) and Wood Lane (Circle Line and Hammersmith & City Line). Bond Street is 12 minutes away and Paddington Station is 8 minutes.

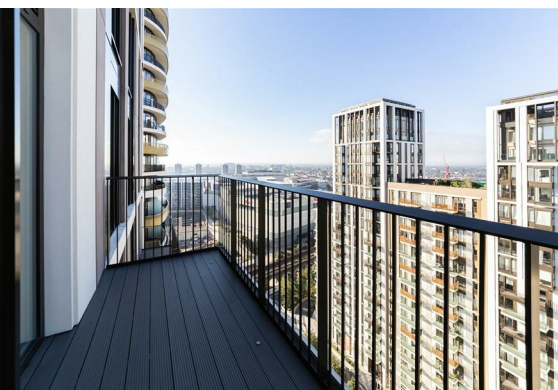
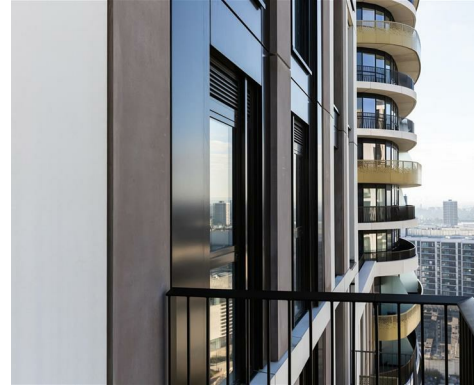
EPC Rating: B

Council: Fulham & Hammersmith (Band G - £2,311.28 per annum 2024/2025)

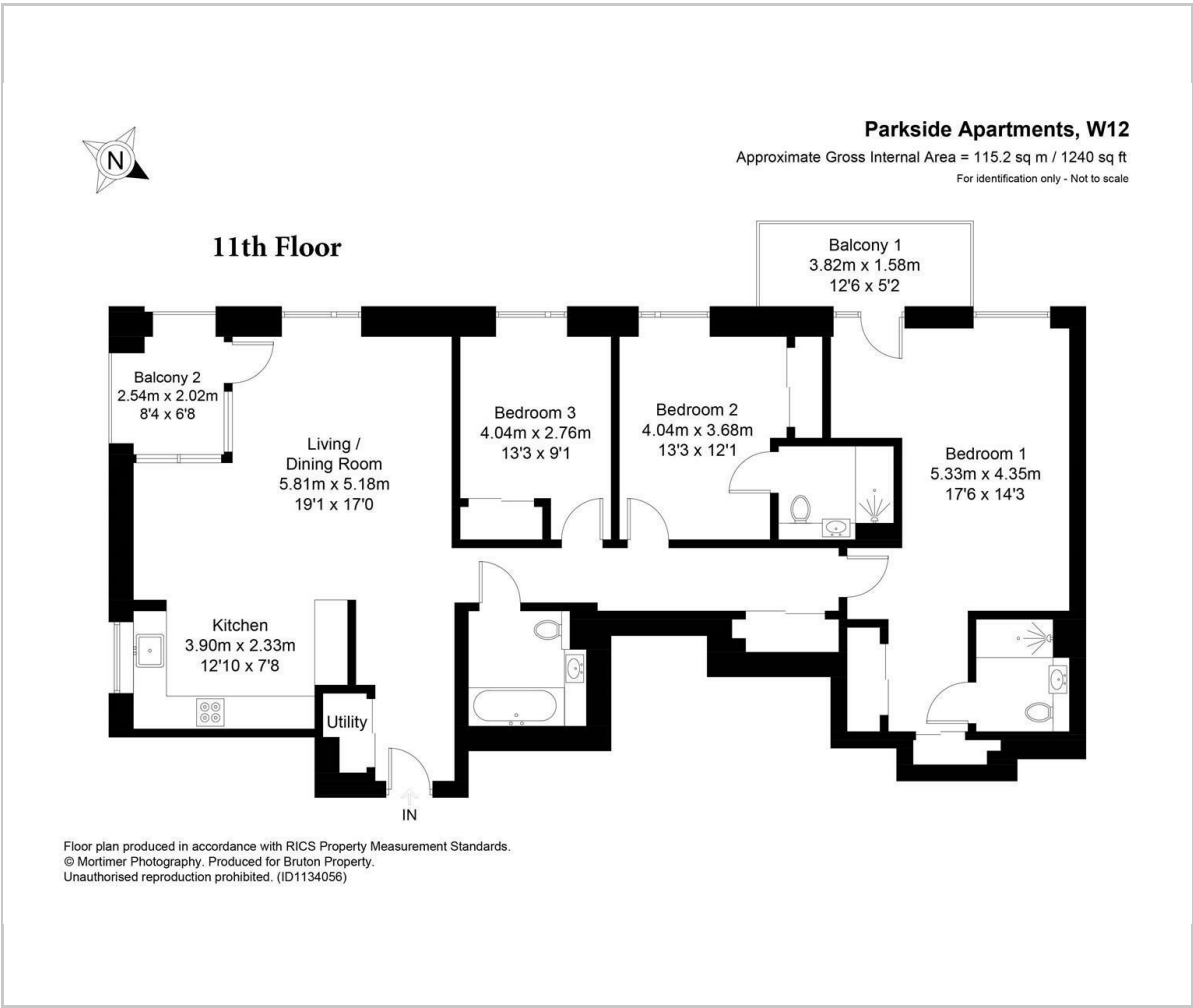
Additional Info:

Ground Rent: £1,000 per annum





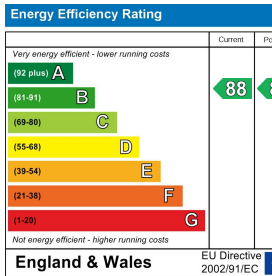
Floor Plan



Area Map



Energy Efficiency G



Viewing

Please contact our Bruton Property Office on 0207 459 4696 if you wish to arrange a viewing appointment for this property or require further information.

These particulars, whilst believed to be accurate are set out as a general outline only for guidance and do not constitute any part of an offer or contract. Intending purchasers should satisfy themselves by inspection or otherwise as to their accuracy. No person in this firms employment has the authority to make or give any representation or warranty in respect



20 Lees Place, Mayfair
London, W1K 6LP



020 7459 4696



info@bruton
www.bruton