



BRUTON

— PROPERTY —



55 Victoria Street
London, SW1H 0AF

Guide price £1,335,000



55 Victoria Street

London, SW1H 0AF

Beautiful 840 sq ft one bedroom apartment complete with residents gym, 24hr concierge and roof garden.

The design quality and contemporary style is a delight, and features: oiled oak timber floors, hand glazed tiles and silestone kitchen worktops. The space in this apartment is well proportioned and offers generous entertaining and living space. The apartment also benefits from under-floor heating (reception room). The property, of (approx) 840 sq ft, comprises: 1 bedroom, 1 bedrooms, kitchen, reception, balcony and access to the residents roof garden and gym. 55 Victoria Street has a 24hr concierge.

55 Victoria Street is one of the most exciting developments in central Westminster. It is located to the south of Buckingham Palace, St James's and Green Park, to the east of Victoria and to the north of Vincent Square. The property is within reach of the many amenities, restaurants, cafes and shops of Victoria, Westminster, St James's and Mayfair

Local parklands include Green Park and St James's Park.

Transport Links include: Circle & District Lines (St James's Park): approx 0.1 miles Victoria and mainline rail services (Victoria): approx 0.4 miles Jubilee Line (Westminster): approx 0.5 miles

Tenure: Leasehold

Lease expires: 3,011 (987 years)

Ground rent: £500 per year

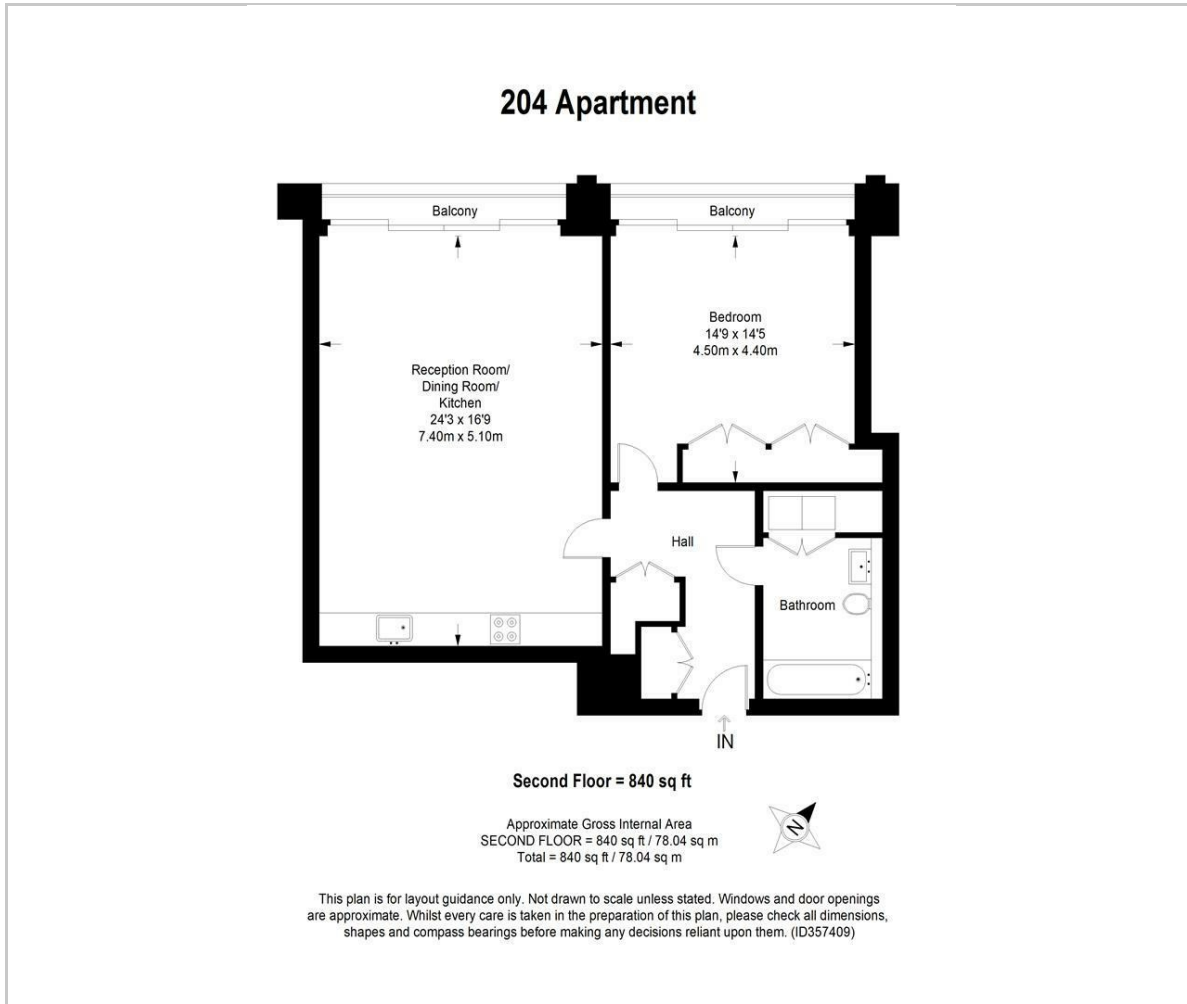




Service charge: £7,240 per year (2021)
Council tax: £1,248.19 per year (Band F)
Local authority: The City of Westminster
Total Sq Ft: 840 (78 Sq M) approx.




Floor Plan




Viewing

Please contact our Bruton Property Office on 0207 459 4696 if you wish to arrange a viewing appointment for this property or require further information.

These particulars, whilst believed to be accurate are set out as a general outline only for guidance and do not constitute any part of an offer or contract. Intending purchasers should not rely on them as statements of representation of fact, but must satisfy themselves by inspection or otherwise as to their accuracy. No person in this firm's employment has the authority to make or give any representation or warranty in respect of the property.

 **20 Lees Place, Mayfair**
London, W1K 6LP

 **020 7459 4696**

 **info@brutonproperty.co.uk**
www.brutonproperty.co.uk

Area Map



Energy Efficiency Graph

