



Estate Agency, Letting Agency & Property Maintenance

LARN Number 1906034

T: 01563 531122 E: kilmarnock@glowhomeslettingandsales.com

37 John Finnie Street, Kilmarnock, KA1 1BL

47-49 Vernon Street, Saltcoats, KA21 5HE



WWW.GLOWHOMESLETTINGANDSALES.COM

Offers Over £135,000 Glen Crescent, Darvel, KA17



- Fantastic 3 Bed Semi
- Presented in show home condition
- Excellent location in the Village of Darvel
- Spacious Lounge with Bay Window
- Newly fitted Kitchen with space for Dining
- 3 Generous size Double Bedrooms
- WC
- Newly fitted Bathroom
- Gas Central Heating & Double Glazing

17 Glen Crescent in Darvel is offered to the market for sale by Glow Homes. This semi-detached villa is presented in walk in condition and offers generous sized living accommodation over two levels. The villa is modern and stylish in decor and is sure to appeal to all buyers.

On entering the property, there is a welcoming hallway providing access to the lounge and bathroom and houses the stairs to the first floor. The spacious front facing lounge

has a large bay window allowing an abundance of natural light to flood the room and a feature fireplace creating a lovely focal point to the room. The rear facing kitchen is accessed via the lounge and it has a door for access to the rear garden. The kitchen comprises of grey floor and wall mounted units with a complimentary white worktop and a feature splashback. The stylish, black sink & tap and induction hob with extractor are off set perfectly with the grey and white. The kitchen benefits from having an open plan dining space which can easily accommodate a family dining table and chairs.

On the first floor of the villa there are three double bedrooms. The bedrooms are a generously sized and bedroom one benefits from having an inset open wardrobe area. The modern fitted bathroom is located on the ground floor and comprises of a bath with overhead shower and glass shower screen, wc and wash hand basin with fitted storage.

The garden to the front is laid to lawn and enclosed with a brick wall. There is a monobloc driveway which provides off street parking for several vehicles, and a detached garage. The garden to the rear is enclosed with fencing and has been designed to make use of all the pockets of space. There is a deck immediately outside the villa which is the perfect spot for outdoor furniture and then a lawn beyond that. There is an open outlook to the back creating a tranquil feel to the garden.

Council Tax Band B

Home Report available.

Glen Crescent, Darvel, KA17

-
-
-

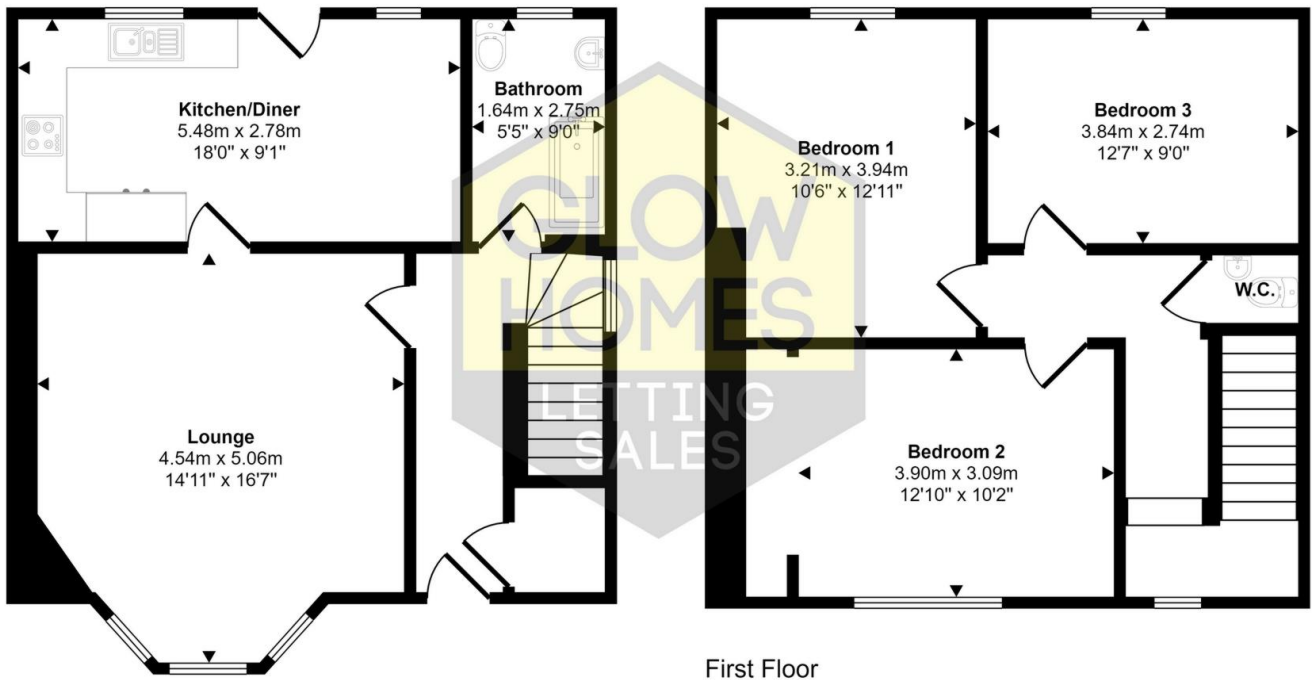








Approx Gross Internal Area
105 sq m / 1131 sq ft



Ground Floor
Approx 53 sq m / 574 sq ft

First Floor
Approx 52 sq m / 557 sq ft

This floorplan is only for illustrative purposes and is not to scale. Measurements of rooms, doors, windows, and any items are approximate and no responsibility is taken for any error, omission or mis-statement. Icons of items such as bathroom suites are representations only and may not look like the real items. Made with Made Snappy 360.

Directions

Location



VIEWING BY APPOINTMENT WITH AGENTS GLOW HOMES AYRSHIRE

37 John Finnie St, Kilmarnock, KA1 1BL T: 01563 531122 E: kilmarnock@glowhomeslettingandsales.com W: <http://www.glowhomeslettingandsales.com/>

General: While we endeavour to make our sales particulars fair, accurate and reliable, they are only a general guide to the property and, accordingly, if there is any point which is of particular importance to you, please contact the office and we will be pleased to check the position for you, especially if you are contemplating travelling some distance to view the property.

Measurements: These approximate room sizes are only intended as general guidance. You must verify the dimensions carefully before ordering carpets or any built-in furniture.

Services: Please note we have not tested the services or any of the equipment or appliances in this property, accordingly we strongly advise prospective buyers to commission their own survey or service reports before finalizing their offer to purchase.

THESE PARTICULARS ARE ISSUED IN GOOD FAITH BUT DO NOT CONSTITUTE REPRESENTATIONS OF FACT OR FORM PART OF ANY OFFER OR CONTRACT. THE MATTERS REFERRED TO IN THESE PARTICULARS SHOULD BE INDEPENDENTLY VERIFIED BY PROSPECTIVE BUYERS OR TENANTS. NEITHER GLOW HOMES AYRSHIRE NOR ANY OF ITS EMPLOYEES OR AGENTS HAS ANY AUTHORITY TO MAKE OR GIVE ANY REPRESENTATION OR WARRANTY WHATEVER IN RELATION TO THIS PROPERTY.

YOUR HOME IS AT RISK IF YOU DO NOT KEEP UP REPAYMENTS ON A MORTGAGE OR OTHER LOAN SECURED ON IT.

Written quotations available on request. All loans secured on property. Life assurance is usually required.